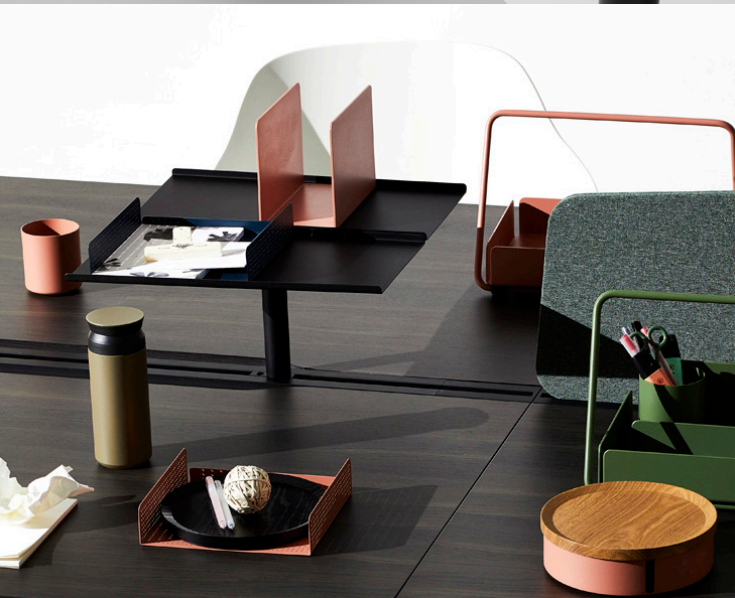


WORK SHAPES Shelves



Features:

Work Shapes is a family of worktop and hanging utility accessories.

It is paired with the shelving system to stack, compose, store, arrange, share, play and shape the way you work.

Options:

- Mounting Options: Through Desk, Clamp-On, Single workstations/runs with CTRL rail and Pod with CTRL rail

Design: ZENITH DESIGN STUDIO

Warranty: 5 years

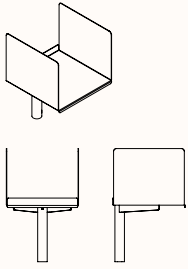
Materials:

Shelf, Binder Shelf, Shelf Double, Shelf Long:
Steel

Finishes:

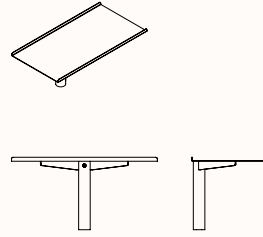
Shelf, Binder Shelf, Shelf Double, Shelf Long:
Powder coated in Zenith Select Fine Texture Finishes in Black, Cool White, Warm Grey, Gum Grey, Canvas White, Indigo, Olive, Blush Pink
Please refer to Powdercoat Specification Sheet

Dimensions



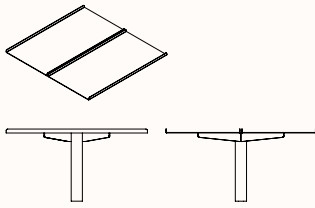
Binder Shelf

OW 250mm
OD 250mm
OH 400mm



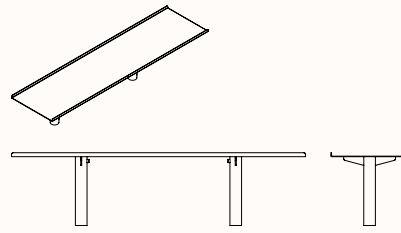
Shelf

OW 425mm
OD 220mm
OH 200mm



Shelf Double

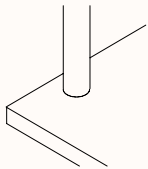
OW 425mm
OD 450mm
OH 200mm



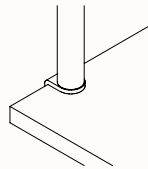
Shelf Long

OW 800mm
OD 220mm
OH 200mm

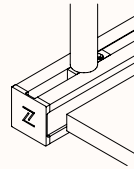
Shelf Mounting Options



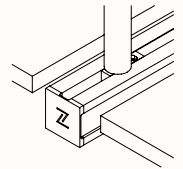
Through Desk



Clamp-On



Workstation with CTRL rail



Pod with CTRL rail

Suitability Matrix

	Binder Shelf	Shelf	Shelf Double	Shelf Long
Through desk mount	•	•	-	-
Clamp-On (clamp fixture required)	•	•	-	-
Single workstations/runs with CTRL rail	•	•	-	-
Pod with CTRL rail	•	•	•	•

• Suitable – Not Suitable