

# Verse Screen Fabric Specification



## CONTENTS:

### Category A

Zenith Woven	<a href="#">2</a>
Cute	<a href="#">3</a>
At work Artisan	<a href="#">4</a>
At work Bond	<a href="#">5</a>
Kvadrat Relate Screen	<a href="#">6</a>

### Category B

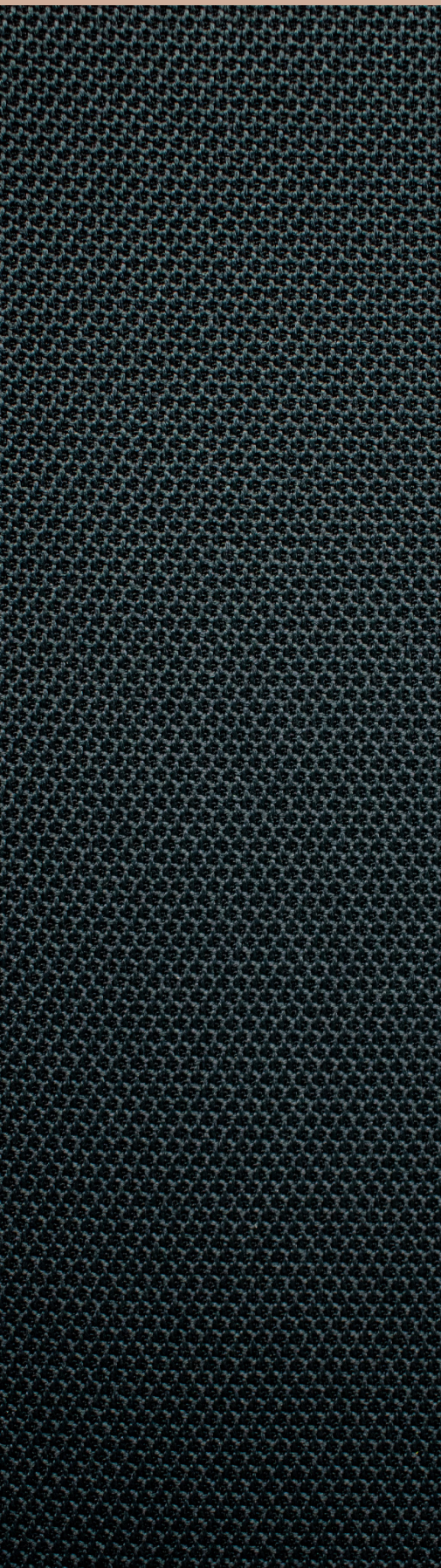
Camira Cara	<a href="#">7</a>
Camira Carlow	<a href="#">9</a>
Kvadrat Remix Screen	<a href="#">11</a>

### Category C

Camira Sonus	<a href="#">12</a>
--------------	--------------------

# Screen / Panel

# Category A



## Zenith Woven

**Composition:** 100% polyester

**Width:** 170cm

**Weight:** 560g

**Use:** Screen

**Abrasion:** 60,000 Martindale Rubs

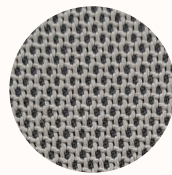
**Light Fastness:** ISO 105 B02 Grade 5-6

**Fire Test:** BS5852 Section 4/part 1  
TB117 Section 1  
ASI530 Part 3

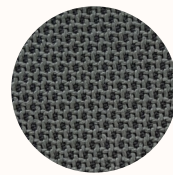
**Fabric Care:** Do not wash, do not bleach, do not tumble dry, iron at medium temperature (max 130°C), professional dry cleaning.



01 Cloud



02 Storm



03 Coal



04 Ink



05 Clay

# Screen / Panel

# Category A



## Cute

**Application:** Heavy Duty Commercial Upholstery for Screens

**Composition:** 100% Polyester

**Width:** 142cm

**Weight:** 320g/m<sup>2</sup>

**Use:** Screen

**Durability:** 40,000 Martindales

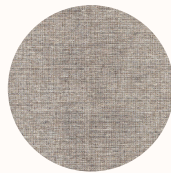
**Pilling:** 4

**Cleaning:** 30° wash cycle, do not bleach, do not tumble dry, low temperature iron



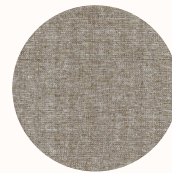
008

Alabaster



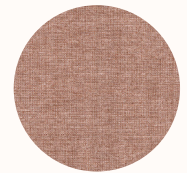
026

Wheat



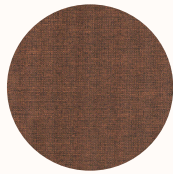
029

Whitewash



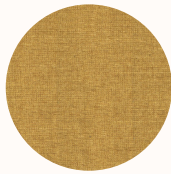
050

Peony



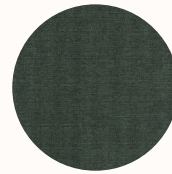
047

Oxide



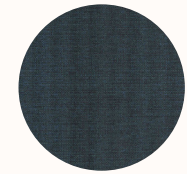
049

Husk



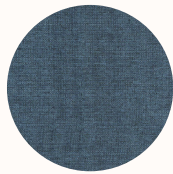
013

Hunter



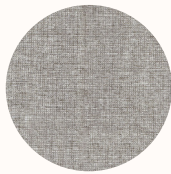
012

Atlantic



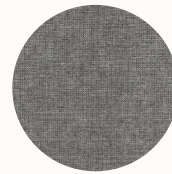
045

Cobalt



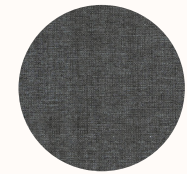
009

Mist



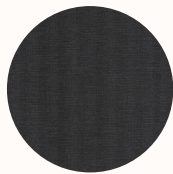
018

Pewter



021

Gunsmoke



073

Shadow

# Screen / Panel

# Category A



## At work Artisan

Heavy duty commercial screen fabric. Linen look textural fabric with 10 great useable neutrals and sharp brights.

**Application:** Commercial Screen Fabric (no upholstery)

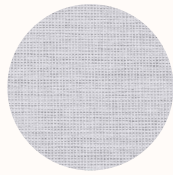
**Composition:** 100% Polyester

**Width:** 170cm

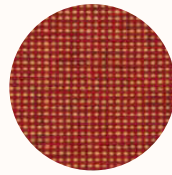
**Abrasion Resistance:** 65,000+ Martindale

**Flammability:** ASI530.3, ISO5660

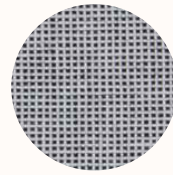
**Cleaning:** Do not remove any part for separate cleaning. Protect from direct sunlight. Vacuum regularly using low suction. Rotate reversible cushions regularly. Professional cleaning recommended.



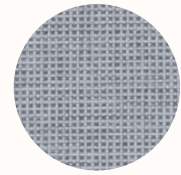
Envisage



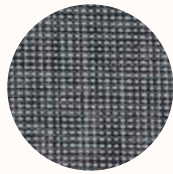
Compose



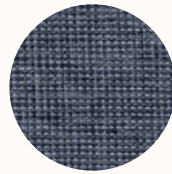
Perceive



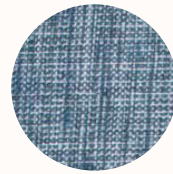
Invent



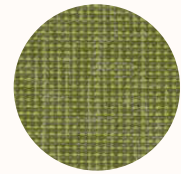
Embark



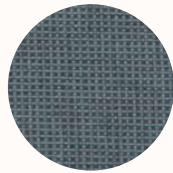
Generate



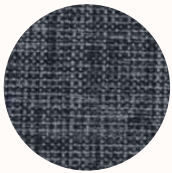
Discover



Create



Imagine



Construct

# Screen / Panel

# Category A



## At work Bond

Heavy duty commercial upholstery and screen fabric. Linen look textural fabric with 12 great useable neutrals and sharp brights. Bond is ideal as a Screen or Upholstery fabric.

**Application:** Upholstery / Screen

**Composition:** 100% Polyester

**Width:** 170cm

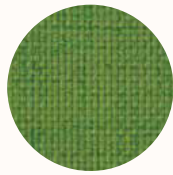
**Weight:** 211g/m<sup>2</sup>

**Abrasion Resistance:** 70,000+ Martindale

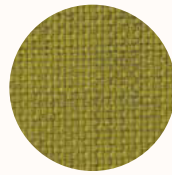
**Flammability:** AS1530 Part 3

**Qualities:** Soil Repellency treatment

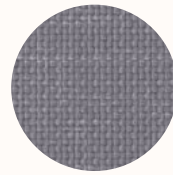
**Cleaning:** Do not remove any part for separate cleaning. Protect from direct sunlight. Vacuum regularly using low suction. Rotate reversible cushions regularly. Professional cleaning recommended.



Leaf



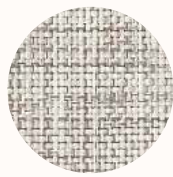
Lemoncello



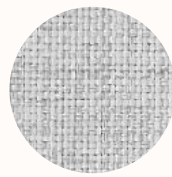
Shark



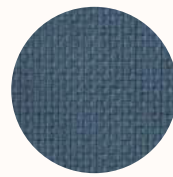
Snow



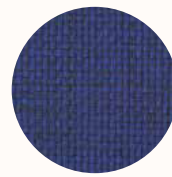
Linen



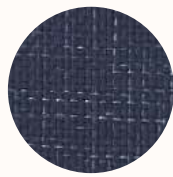
Smoke



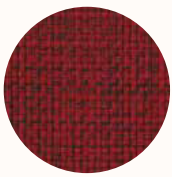
Spring



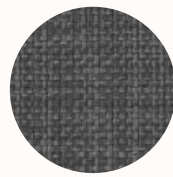
Royal



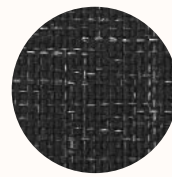
Navy



Garnet



Grey Haze



Jet

# Screen / Panel

# Category A



## Kvadrat Relate Screen

Relate Screen is a special version of the sophisticated twill-woven upholstery textile Relate developed for wall panels, desk screens and similar applications. Patricia Urquiola has created both designs to rethink the concept of melange. While Relate Screen is identical in composition to Relate, it has a more open structure. A faux-uni, it initially appears monochromatic yet, under closer inspection, reveals a diagonal weave which fluidly blends two different coloured yarns. Relate Screen's twill-woven construction captures a delicate sense of movement and subtly references the fashion world. The textile also features a soft hand and an expression that resembles natural fibres.

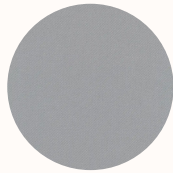
**Composition:** 100% Trevira CS

**Width:** Approx 170cm

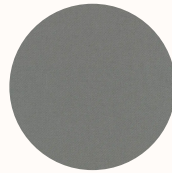
**Weight:** 470 g/lin.

**Pilling:** 3-4 (ISO 1-5)

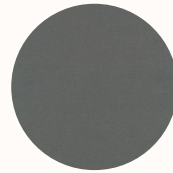
**Light Fastness:** 5-7 (ISO 1-8)



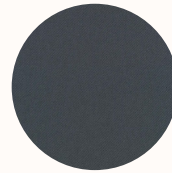
0128



0158



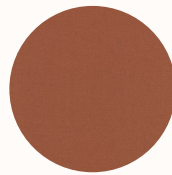
0168



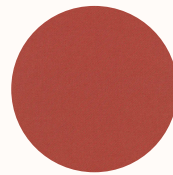
0178



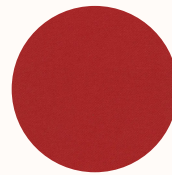
0388



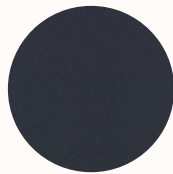
0468



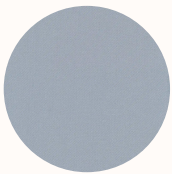
0568



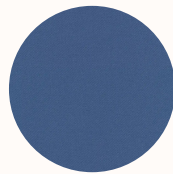
0648



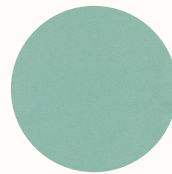
0698



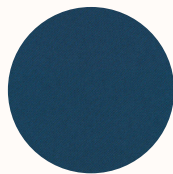
0718



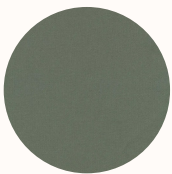
0778



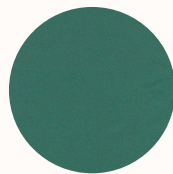
0828



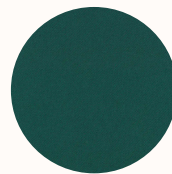
0888



0948



0968



0988

## Screen / Panel

## Category B

## Camira Cara

Cara is a plain weave panel fabric available in a wide selection of commercial colourways. One of our most popular vertical surface fabrics, Cara is used extensively on desk screens, wallsides and on pin boards.

This fabric is largely acoustically transparent and as such is ideal to be used as a decorative facing for sound absorbing boards.

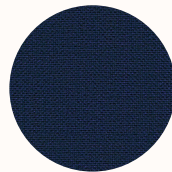
**Composition:** 100% polypropylene

**Width:** Approx 170cm

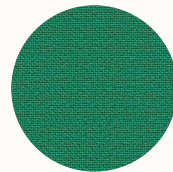
**Weight:** 220 g/m<sup>2</sup>



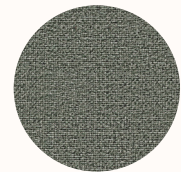
EJ004  
Glass



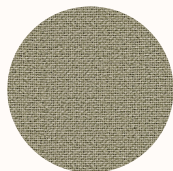
EJ011  
Walten



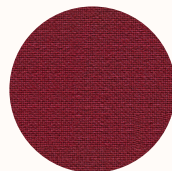
EJ015  
Carron



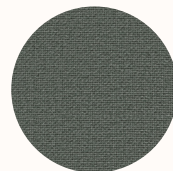
EJ016



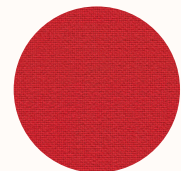
EJ033  
Spray



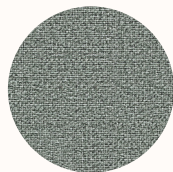
EJ038  
Tummel



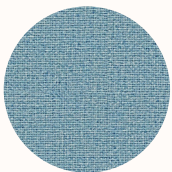
EJ048  
Merrick



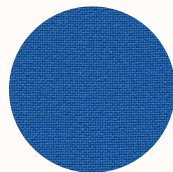
EJ076  
Pitlochry



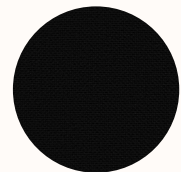
EJ104  
Lead



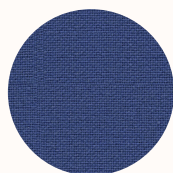
EJ105  
Dolphin



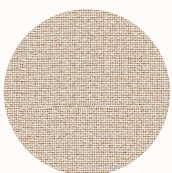
EJ125  
Galilee



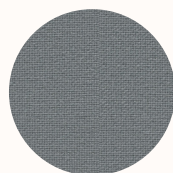
EJ138  
Black



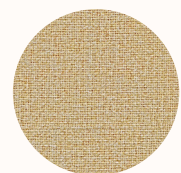
EJ154  
Adriatic



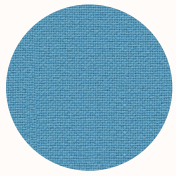
EJ169  
Clan



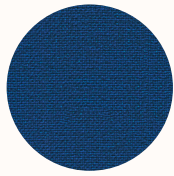
EJ172  
Chaucer



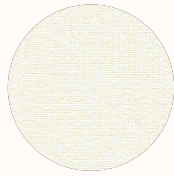
EJ173  
Austen



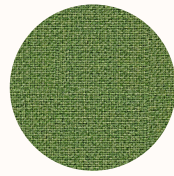
EJ175  
Inverness



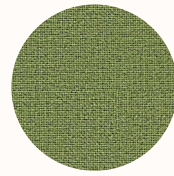
EJ180  
Cluanie



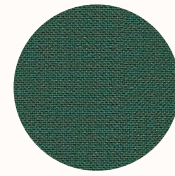
EJ184  
Vit



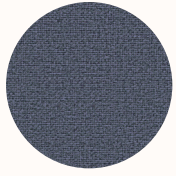
EJ185  
Staffa



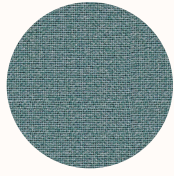
EJ186  
Fair Isle



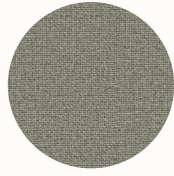
EJ187  
Lora



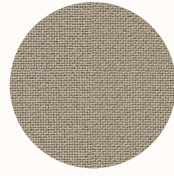
EJ188  
Easdale



EJ189  
Ronay



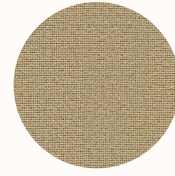
EJ190  
Hillswick



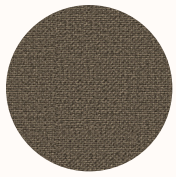
EJ191  
Shetland



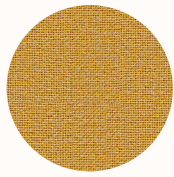
EJ192  
Lomond



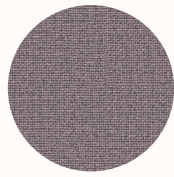
EJ193  
Beltane



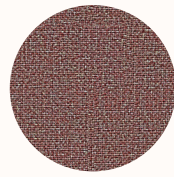
EJ194  
Lerwick



EJ195  
Maree



EJ196  
Denny



EJ197  
Lossie

# Screen / Panel

# Category B



## Camira Carlow

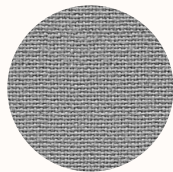
Carlow echoes the calm, gentle landscape of its Celtic namesake in rural Ireland. The fabric, like the county, invites you to escape into a place of tranquillity, discovering and exploring its hidden gems scattered throughout a vibrant textile tableau. This dobby weave panel fabric is brought to life in brave and intriguing colour mixes which can be teamed with our most popular upholstery fabrics as well as its panel partner Cara. Carlow is acoustically transparent, making it ideal as a decorative facing for sound absorbing boards.

**Composition:** 100% polyester

**Width:** Approx 170cm

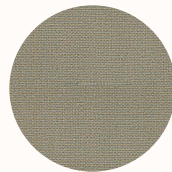
**Weight:** 348 g/m

**Durability:** 65,000 Martindale



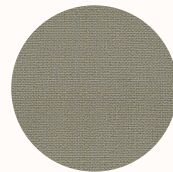
CLW01

Tallow



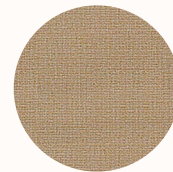
CLW02

Ballina



CLW03

Roundwood



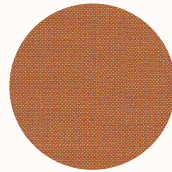
CLW04

Quin



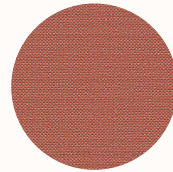
CLW05

Callan



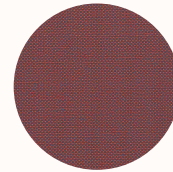
CLW06

Navan



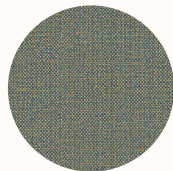
CLW07

Dublin



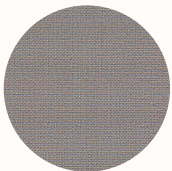
CLW08

Redcross



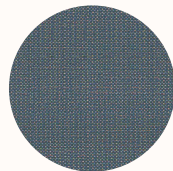
CLW09

Convoy



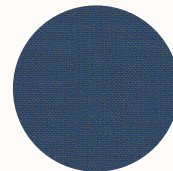
CLW10

Ardee



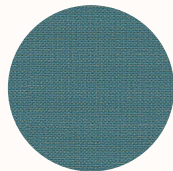
CLW11

Wicklow



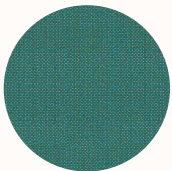
CLW12

Malin



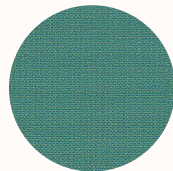
CLW13

Sligo



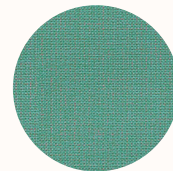
CLW14

Bree



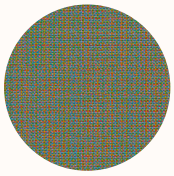
CLW15

Cavan

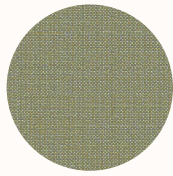


CLW16

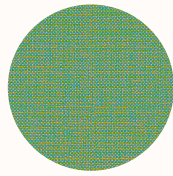
Mayo



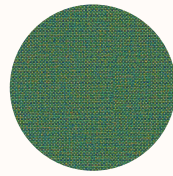
CLW17  
Balloo



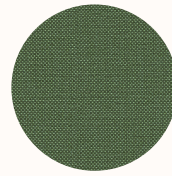
CLW18  
Carrick



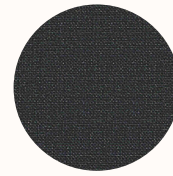
CLW19  
Ardmore



CLW20  
Ennis



CLW21  
Emily



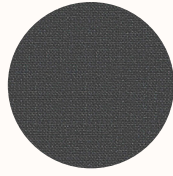
CLW22  
Avoca



CLW23  
Parteen



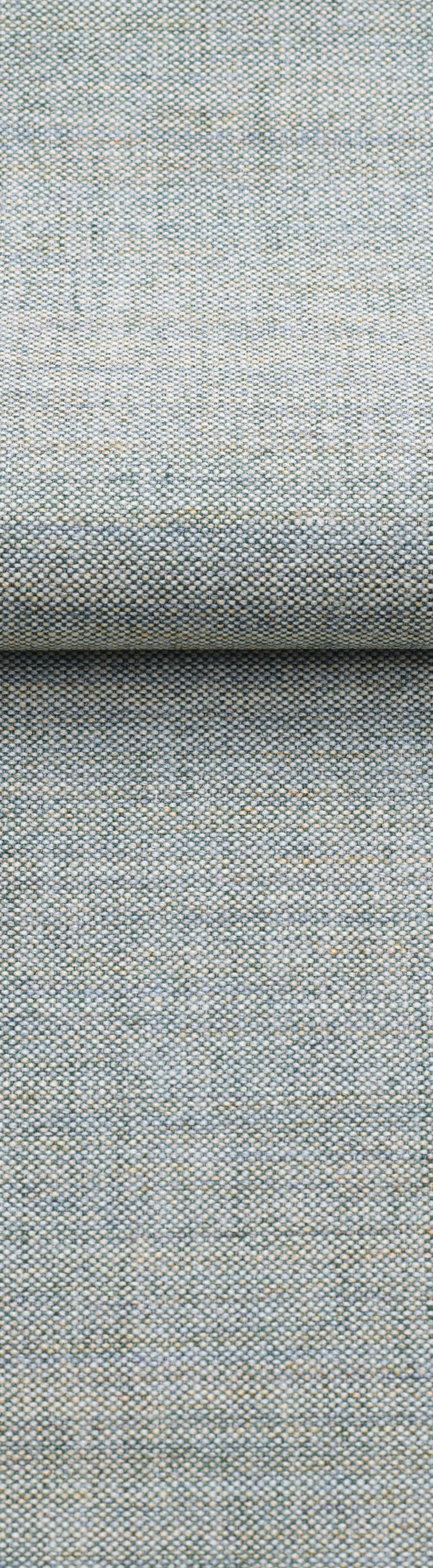
CLW24  
Glenamoy



CLW25  
Clifden

# Screen / Panel

# Category B



## Kvadrat Remix Screen

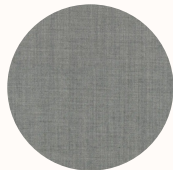
Remix Screen is a lighter version of the acclaimed textile Remix, which is specially developed for wall panels, deskscreens and similar applications. Like Remix, it is designed by Giulio Ridolfo. Remix Screen comes in 16 elegant colourways created matching the palette of Remix 3. Inspired by an extensive study of traditional Indigo dyeing undertaken by Giulio Ridolfo on his travels, these comprise subtle neutrals and natural notes, as well as bolder blue and orange hues. Suitable for contract use, Remix Screen is very durable and has a long life span. It is ideal for architects and designers who seek to configure interiors into different spaces with panels, screens and room-dividing furniture.

**Composition:** 90% new wool worsted 10% nylon

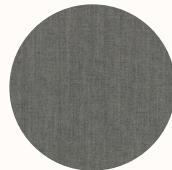
**Width:** Approx 170cm

**Weight:** 450 g/lin. m

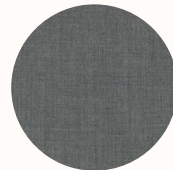
**Light Fastness:** 6-7



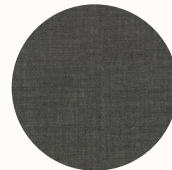
0128



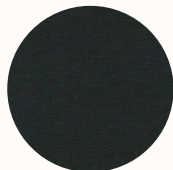
0138



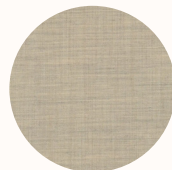
0148



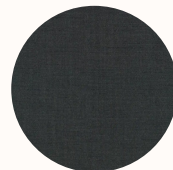
0158



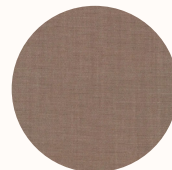
0188



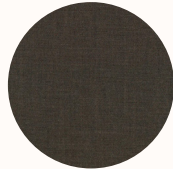
0228



0288



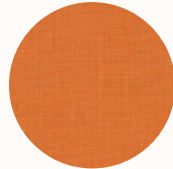
0328



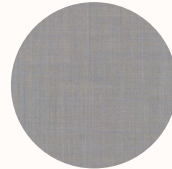
0358



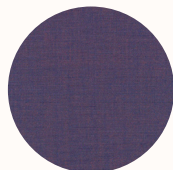
0408



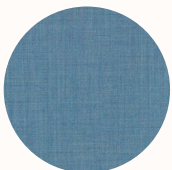
0528



0608



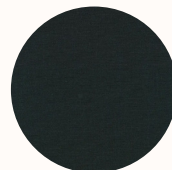
0688



0818



0908



0998

# Screen / Panel

# Category C



## Camira Sonus

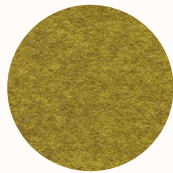
With a fibre felted finish and an appealing mélange effect, the Sonus range is the ideal accompaniment for a modern interior. An acoustically transparent fabric for use on panels, Sonus is the perfect enhancement for a range of vertical surfaces.

**Composition:** 72% Polyester, 18% Polyamide, 10% Viscose FHU: 57% Polyester, 43% Polyamide

**Width:** Approx 170cm

**Weight:** 200 g/m2 ±10%

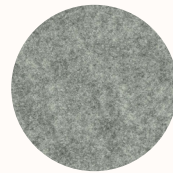
**Light Fastness:** 5 (ISO 105 - B02), 4 (ISO 105 - B02)



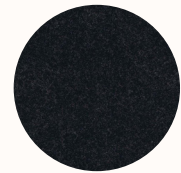
FHR01  
Song



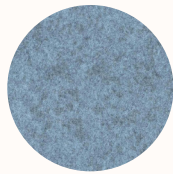
FHR02  
Voice



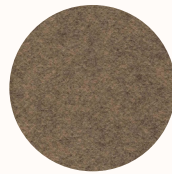
FHR03  
Beat



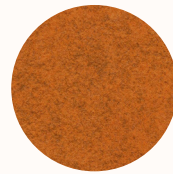
FHR05  
Amp



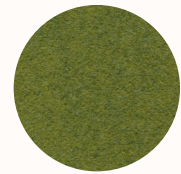
FHR06  
Audio



FHR07  
Melody



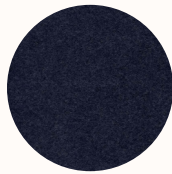
FHR09  
Pop



FHR12  
Acoustic



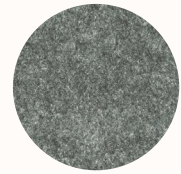
FHR13  
Soul



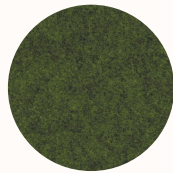
FHR16  
Verse



FHR17  
Chorus



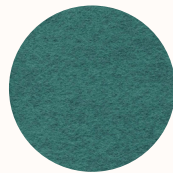
FHU04  
Music



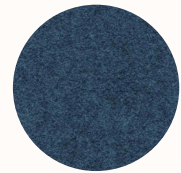
FHU08  
Vocal



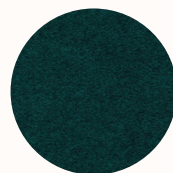
FHU10  
Chime



FHU11  
Rap



FHU14  
Classical



FHU15  
Lyric