

# SIMPL Screen



## Features:

Simpl is a frameless, lightweight screen solution that can be worktop or frame mounted using a variety of substrates. Simpl Screen is a pinnable screen available in a range of sizes and shapes.

## Options:

- Worktop Screw-Fixed: Classic, Sweep, Elevated & Curve
- Worktop Clamp-on: Classic or Sweep
- Frame mounted: Spine

**Design:** ZENITH DESIGN STUDIO

**Warranty:** 5 years

## Finishes:

### 12mm Sonic Board:

Zenith select range or other PET on request

### Brackets:

Powder coated

### Sonic Board with Black Satin Bracket:



Light Grey  
ZPET\_004



Ash  
ZPET\_007



Olive  
ZPET\_010



Shadow  
ZPET\_011

### Sonic Board with White Satin Bracket:



Cloud  
ZPET\_012

Note: Other bracket powder coat colours available on request

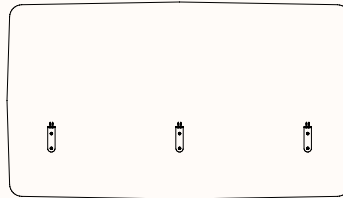
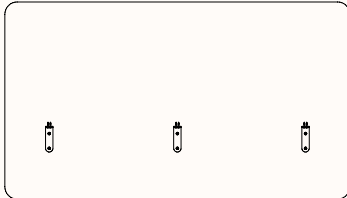


## Worktop Screw-fixed

- Compatible with 18mm, 25mm and 33mm worktops
- Refer to Screen compatibility Matrix Document
- (screen width = 600 – 900mm to match worktop depth)

### Dimensions

#### STANDARD



##### Classic Shape

Width Range: 500-2000mm

Screen Actual Height: 205-800mm (depending on worktop thickness)

Screen Height Above Desk:

Min: 50mm

Max: 480mm

Screen Height Below Desk:

Min: 130mm

##### Sweep Shape

Width Range: 500-2000mm

Screen Actual Height: 205-800mm (depending on worktop thickness)

Screen Height Above Desk:

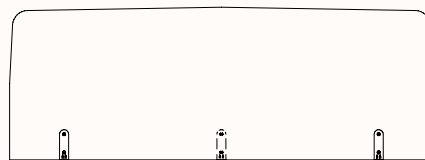
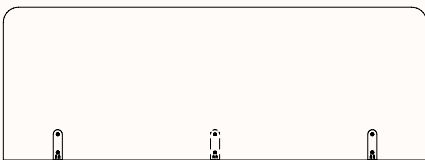
Min: 50mm

Max: 480mm

Screen Height Below Desk:

Min: 130mm

#### ELEVATED



##### Classic Shape

Width Range: 500-2000mm

Screen Actual Height: max 505mm

Worktop rear corner radius: R50

Screen Height Above Desk:

Min: 150mm

Max: 480mm

##### Sweep Shape

Width Range: 500-2000mm

Screen Actual Height: max 505mm

Worktop rear corner radius: R50

Screen Height Above Desk:

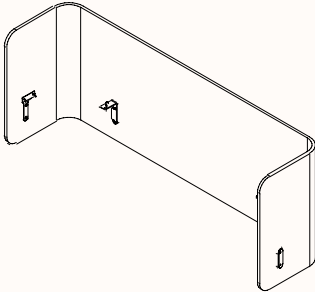
Min: 150mm

Max: 480mm

## Worktop Screw-fixed

- Compatible with 18mm, 25mm & 33mm worktops
- Classic Shape only
- Refer to Screen compatibility Matrix Document

## Dimensions



### Curve

Worktop Length Range: 800-2400mm

\*Return Length: 300-800mm

Screen Actual Height: 198mm min (depends on worktop thickness) – 800mm max

Worktop rear corner radius: R50

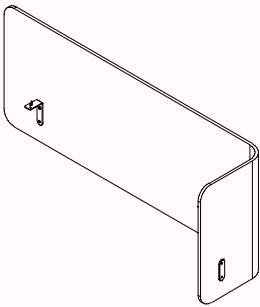
Screen Height Above Desk:

Min: 50mm

Max: 480mm

Screen Height Below Desk:

Min: 130mm



### Curve RH

Worktop Length Range: 800-2400mm

\*Return Length: 300-800mm

Screen Actual Height: 198mm min (depends on worktop thickness) – 800mm max

Worktop rear corner radius: R50

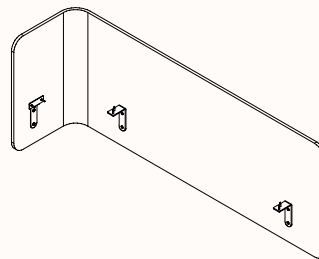
Screen Height Above Desk:

Min: 50mm

Max: 480mm

Screen Height Below Desk:

Min: 130mm



### Curve LH

Worktop Length Range: 800-2400mm

\*Return Length: 300-800mm

Screen Actual Height: 198mm min (depends on worktop thickness) – 800mm max

Worktop rear corner radius: R50

Screen Height Above Desk:

Min: 50mm

Max: 480mm

Screen Height Below Desk:

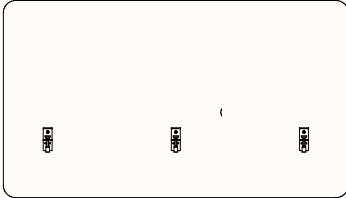
Min: 130mm

\*Note: Overall screen length limited by substrate

## Worktop Clamp-on

- Compatible with 18mm and 25mm worktops
- Refer to Screen compatibility Matrix Document

## Dimensions



### Classic Shape

Width Range: 500-2000mm

Screen Actual Height: 198-800mm (depending on worktop thickness)

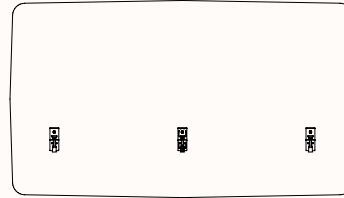
Screen Height Above Desk:

Min: 50mm

Max: 480mm

Screen Height Below Desk:

Min: 130mm



### Sweep Shape

Width Range: 500-2000mm

Screen Actual Height: 198-800mm (depending on worktop thickness)

Screen Height Above Desk:

Min: 50mm

Max: 480mm

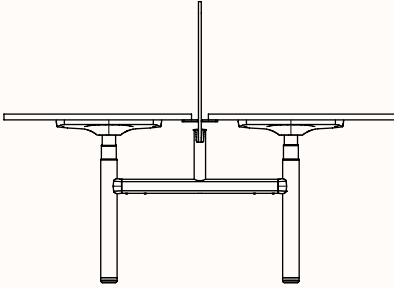
Screen Height Below Desk:

Min: 130mm

## Frame Mounted Spine

- Compatible with Classic Shape only
- Screen gap is fixed at 30mm
- Screen width must equal length of workstation
- Post is round for workstations with round legs
- Post is square for workstations with rectangular legs

## Dimensions



### Spine

Width Range: 1200 -2000mm

Screen Overall Height: 900-1250

Screen above floor Height:

Fixed: 600mm