

NORR11

Material Guide

Zenith

CONTENTS

OUR COLOR CURATION

| | |
|-----------------|----|
| Gray Haze | 4 |
| Sepia Tone | 6 |
| Warm Sunlight | 8 |
| Moorland Greens | 10 |
| Blue Delight | 12 |

FABRICS

| | |
|-----------------|----|
| CAT 0 | |
| Grain | 14 |
| Cura | 18 |
| Chili | 22 |
| Step Melange | 26 |
| Megan | 30 |
| CAT 1 | |
| Mumble | 34 |
| Remix 3 | 38 |
| Fame | 42 |
| CAT 2 | |
| Barnum | 46 |
| Breeze Fusion | 50 |
| Canvas 2 | 54 |
| CAT 3 | |
| Fiord 2 | 58 |
| Hallingdal 65 | 62 |
| Steelcut Trio 3 | 66 |
| Savanna | 70 |
| Zero | 72 |
| CAT 4 | |
| Moss | 74 |
| Safire | 76 |
| Baru | 78 |

OUTDOOR FABRICS

| | |
|------------------|----|
| Sunbrella Savane | 80 |
|------------------|----|

LEATHERS

| | |
|----------------------|----|
| Our Leather Curation | 82 |
|----------------------|----|

CAT I

| | |
|---------------|----|
| Ultra | 84 |
| Ultra Crib 5 | 88 |
| Matara (faux) | 90 |

CAT II

| | |
|--------|----|
| Nuance | 94 |
| Flux | 96 |
| Envy | 98 |

CAT III

| | |
|----------|-----|
| Dunes | 100 |
| Terra | 102 |
| Spectrum | 104 |

CAT IV

| | |
|-----------|-----|
| Sheepskin | 110 |
|-----------|-----|

WOOD

112

METAL

114

POLYPROPYLENE

116

STONE & CONCRETE

118

GRAY HAZE



GRAY HAZE

Nature's misty mornings and urban twilight hours come alive with the mesmerizing interplay of muted grays. Comprising various shades of gray tinged with the faintest hint of other hues, the Gray Haze nuances effortlessly blend into monochromatic schemes or find harmony with other colors. A subtle and timeless palette that evokes a sense of calm, lending a touch of elegance to any space.



BARNUM 010



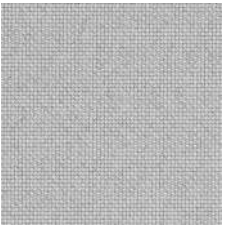
CHILI 60116



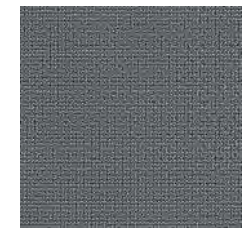
MUMBLE 010



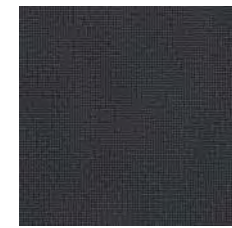
STEP MELANGE 60345



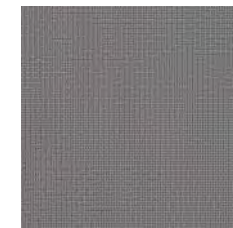
CURA 60000



CURA 60110



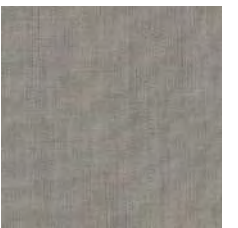
FAME 60019



FAME 60078



REMIX 3 133



REMIX 3 126



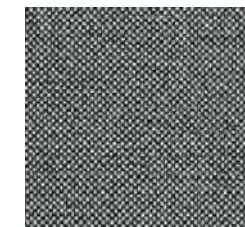
GRAIN 60320



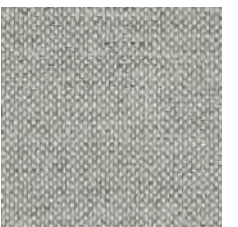
MEGAN 27



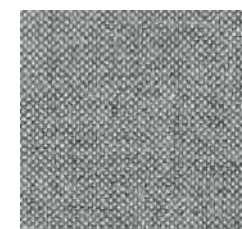
CANVAS 2 124



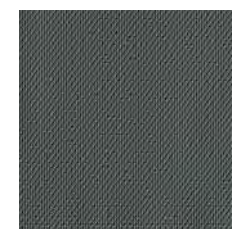
HALLINGDAL 65 126



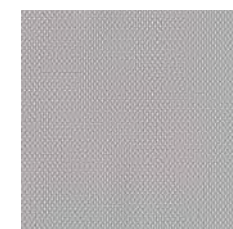
HALLINGDAL 65 110



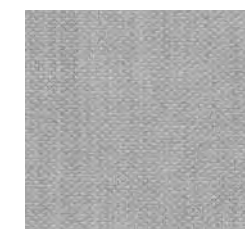
HALLINGDAL 65 116



STEELCUT TRIO 153



STEELCUT TRIO 105



FIORD 2 121



FIORD 2 151



ZERO 0016



SAFIRE 008



MOSS 016



BARU 0120

NORR11

SEPIA TONE



SEPIA TONE

Sepia tones are probably most known for being utilized in various forms in old photography, evoking a sense of familiarity and warmth. This color palette imparts a cozy and welcoming atmosphere in the rooms it inhabits, while its versatility allows it to blend harmoniously with other hues and textures. Sepia Tones adds a sense of sophistication to the overall decor, while the timelessness of the palette ensures its rightful place for generations to come.

NORR11



BARNUM 024



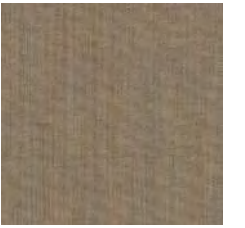
CHILI 61174



MUMBLE 026



STEP MELANGE 61286



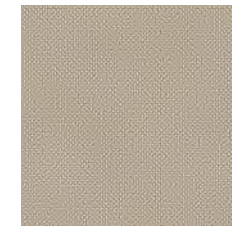
REMIK 3 242



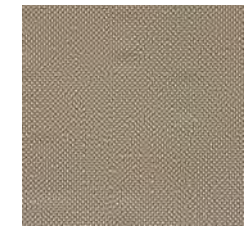
SAVANNA 0122



CANVAS 2 224



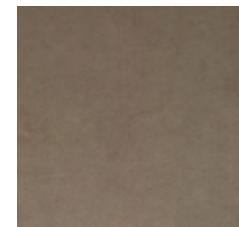
HALLINGDAL 65 200



HALLINGDAL 65 220



STEELCUT TRIO 3 236



MEGAN 26



FIORD 2 271



ZERO 0001



ZERO 0009



ZERO 0012



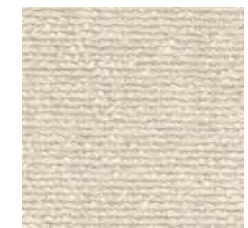
SAFIRE 0014



MOSS 0019



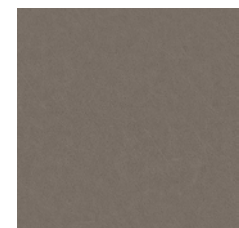
MOSS 0020



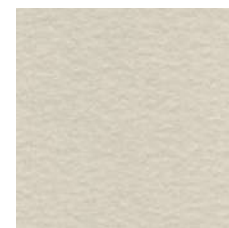
MOSS 0004



SPECTRUM MINERAL 30160



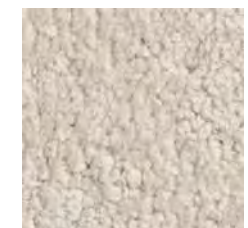
DUNES STONE 21010



BARU 0200



SHEEPSKIN SAHARA



SHEEPSKIN MOONLIGHT

WARM SUNLIGHT



WARM SUNLIGHT

Warm Sunlight reminisces the sun's gentle glow as it bids farewell to the day. Inspired by the golden hour of a setting sun, the color palette exudes a mesmerizing allure that captivates the senses and invites us to revel in the beauty of the moment. The palette embraces an array of colors that, like rays of sun, dance gracefully together, creating a sense of delight and tranquility while inviting us to indulge in the furniture it dresses with golden hues.

NORR11



BARNUM 005



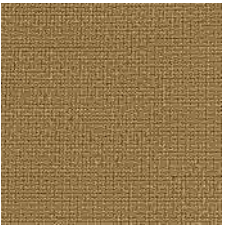
CHILI 62086



MUMBLE 028



STEP MELANGE 62144



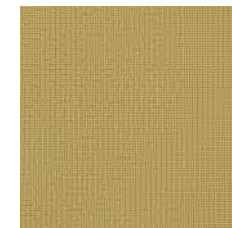
CURA 62083



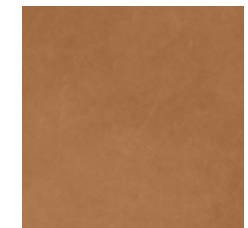
CURA 62082



CURA 62084



FAME 62068



DUNES CAMEL 21004



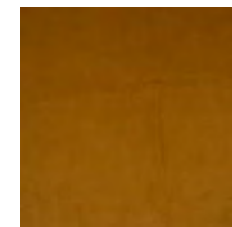
REMUX 3 433



GRAIN 61037



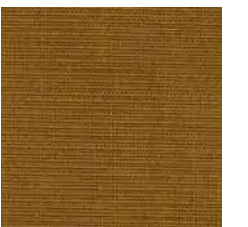
GRAIN 62123



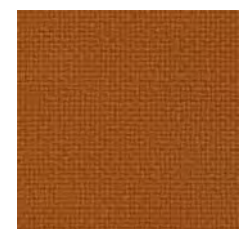
MEGAN 79



CANVAS 2 446



CANVAS 2 424



HALLINGDAL 65 547



HALLINGDAL 65 457



HALLINGDAL 65 407



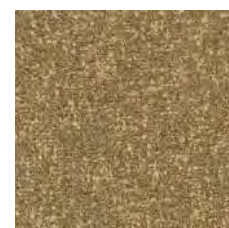
STEELCUT TRIO 3 446



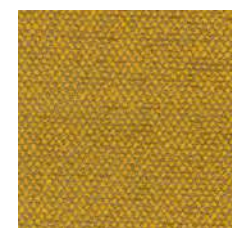
STEELCUT TRIO 3 466



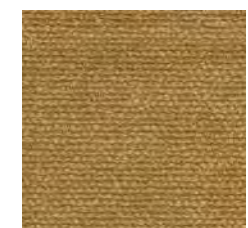
FIORD 2 422



ZERO 0003



SAFIRE 0017



MOSS 0022



MOORLAND GREENS

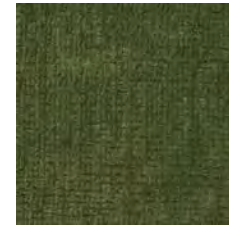
Imagine standing atop a rolling moorland, enjoying the view of a verdant landscape. Moorland Greens is a captivating color palette that embraces the essence of nature's beauty, reflecting the shades of green in the soft mosses, ferns, and grasses that blanket the terrain. This rich and sophisticated hue combines the earthy tones of green with subtle undertones of gray and hints of brown, creating a harmonious and timeless palette that exudes a sense of serenity and connection.

NORR11

MOORLAND GREENS



CHILI 68197



MUMBLE 007



STEP MELANGE 68161



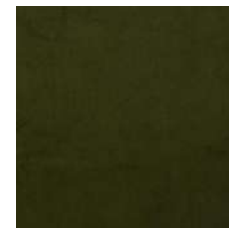
CURA 68182



CURA 68261



MEGAN 104



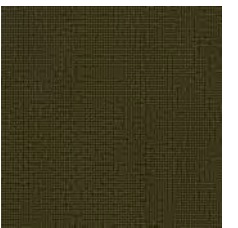
MEGAN 13



GRAIN 68243



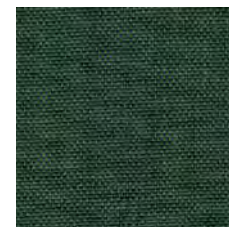
GRAIN 68260



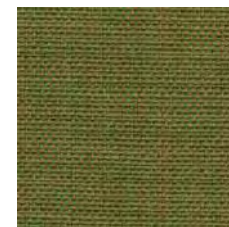
FAME 68148



REMUX 3 933



REMUX 3 982



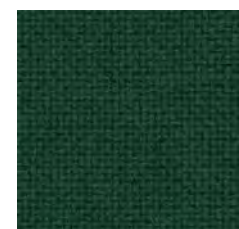
REMUX 3 942



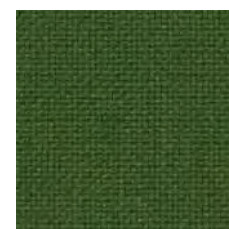
CANVAS 2 974



CANVAS 2 946



HALLINGDAL 65 944



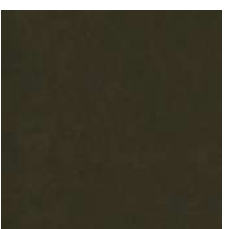
HALLINGDAL 65 960



MOSS 0001



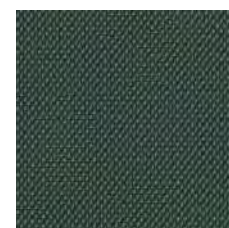
SAFIRE 0005



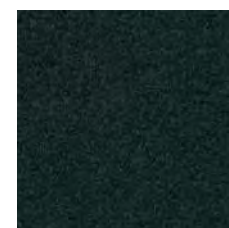
ENVY OLIVE 20324



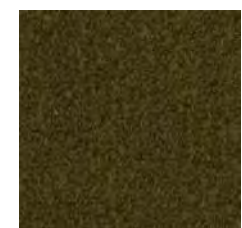
STEELCUT TRIO 3 946



STEELCUT TRIO 3 966



BARU 0980



BARU 0950

BLUE DELIGHT



BLUE DELIGHT

Found primarily in the vast expanse of the sky and the boundless depths of the sea, blue's rarity in nature has endowed it with an aura of exclusivity and sophistication throughout history. The Blue Delight palette encompasses intriguing textures in a harmonious blend of light and dark hues evoking a sense of joy and contemplation. Seamlessly blending with both warm and cool tones, the palette allows for endless combinations and unparalleled aesthetic appeal.

NORR11



BARNUM 015



BARNUM 019



MUMBLE 032



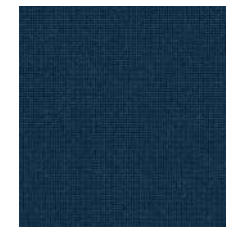
CURA 66170



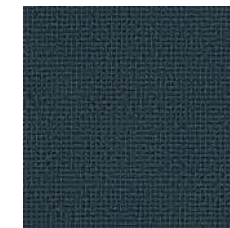
CURA 66169



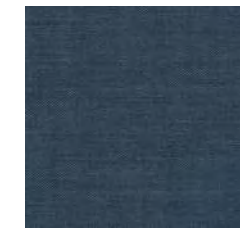
FAME 66061



FAME 66071



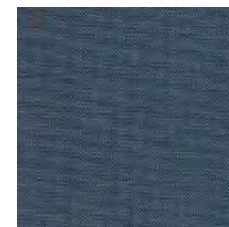
GRAIN 66231



REMI X 3 836



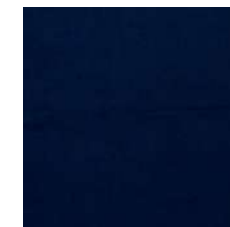
REMI X 3 823



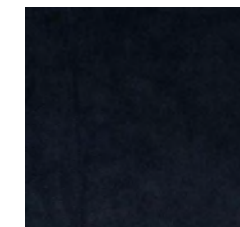
REMI X 3 743



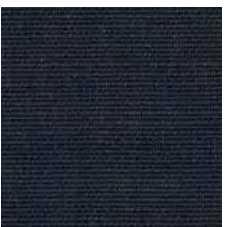
MEGAN 110



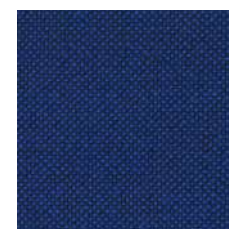
MEGAN 52



MEGAN 2



CANVAS 2 786



HALLINGDAL 65 754



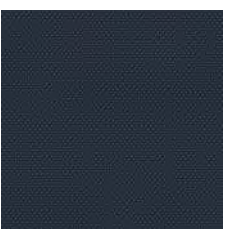
HALLINGDAL 65 764



FIORD 2 672



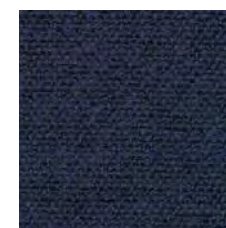
FIORD 2 771



STEELCUT TRIO 3 796



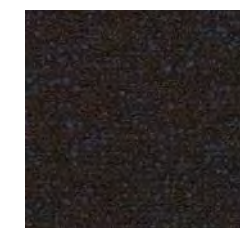
MOSS 0009



SAFIRE 0011



ZERO 0007



ZERO 0010



GRAIN

Grain is a post-consumer recycled polyester bouclé fabric and a celebration of the perfectly imperfect. It embraces a flawed beauty and asymmetric aesthetic inspired by the irregular textures of nature and the grained cement surfaces in contemporary architecture. With its fine texture and understated elegance, Grain redefines the bulky bouclé and gives it a contemporary, sophisticated vibe.

| | |
|---------------------|---|
| Supplier | Gabriel |
| Composition | 92% Post-Consumer Polyester, 8% Polyester |
| Martindale | 100.000 |
| Flammability | BS EN 1021 1&2 Cigarette and Match, BS EN 1021-1 Cigarette, CA TB 117-2013 |
| Environment | STANDARD 100 by OEKO-TEX® |

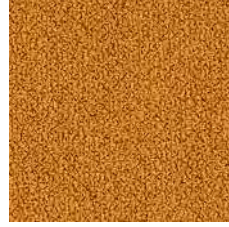
GRAIN BY GABRIEL



NORR11



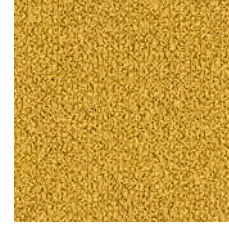
GRAIN 61256



GRAIN 62016



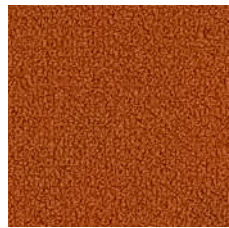
GRAIN 62121



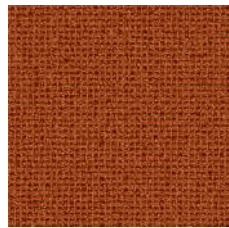
GRAIN 62122



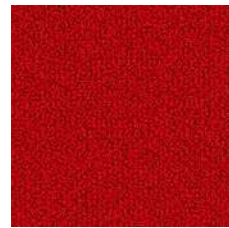
GRAIN 62123



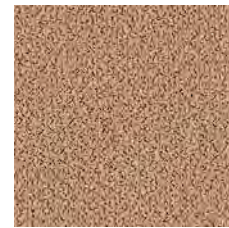
GRAIN 63117



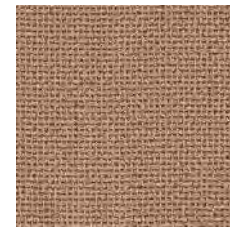
GRAIN 63118



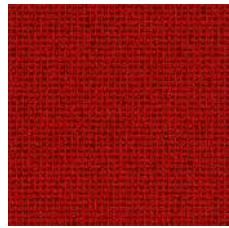
GRAIN 64041



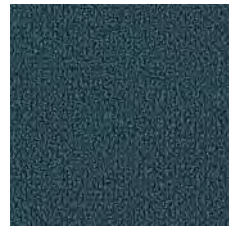
GRAIN 64249



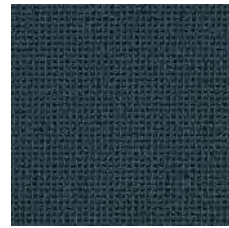
GRAIN 64250



GRAIN 64251



GRAIN 66216



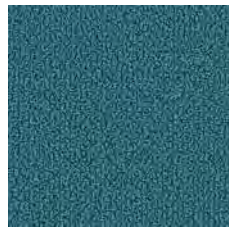
GRAIN 66231



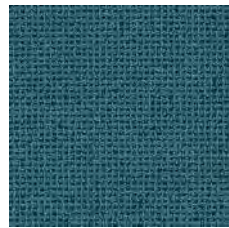
GRAIN 66232



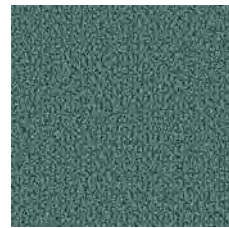
GRAIN 66233



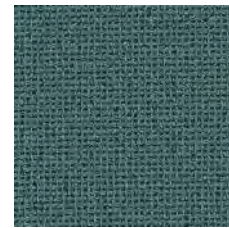
GRAIN 66234



GRAIN 66235



GRAIN 66236



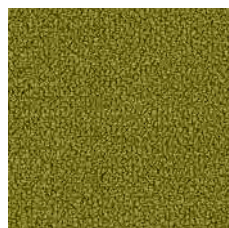
GRAIN 66237



GRAIN 68155



GRAIN 68243



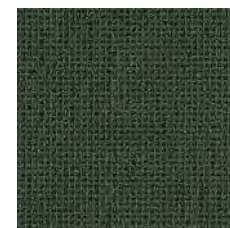
GRAIN 68257



GRAIN 68258

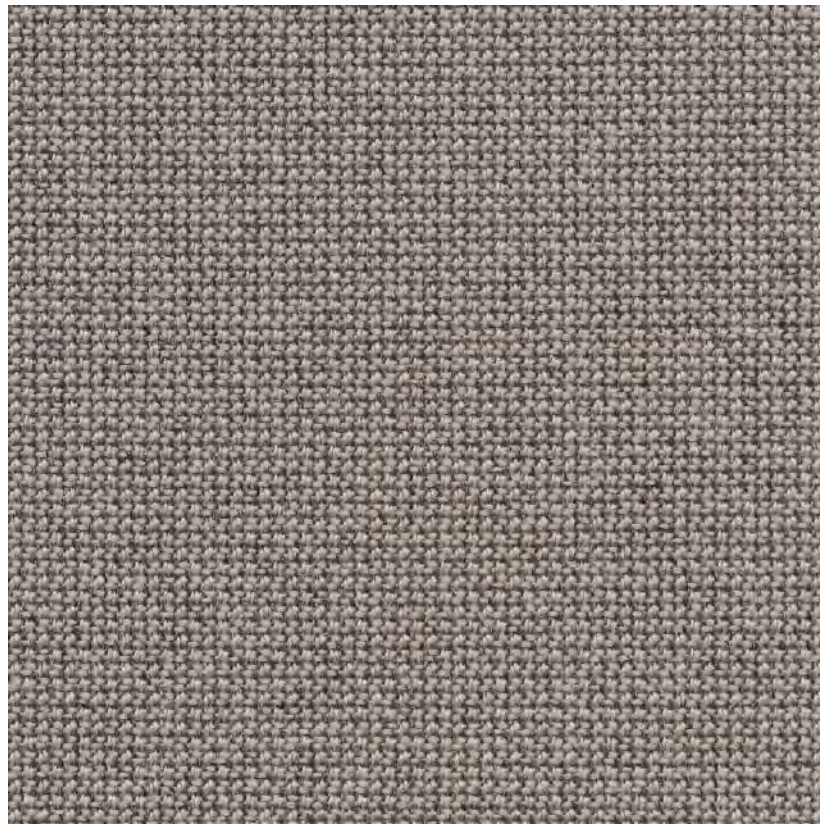


GRAIN 68259



GRAIN 68260





CURA 60112

CURA 60110

CURA 61168

CURA 60109

CURA 61169



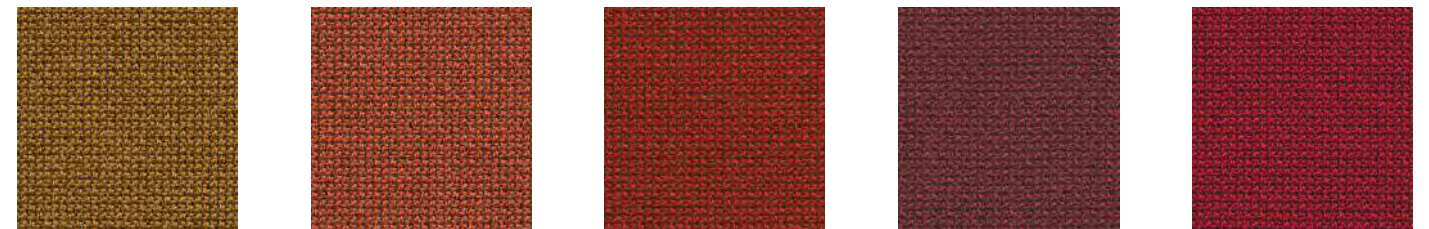
CURA 66166

CURA 60111

CURA 60019

CURA 62084

CURA 62083



CURA 62082

CURA 63078

CURA 63012

CURA 64196

CURA 64013



CURA 64197

CURA 64195

CURA 64194

CURA 65105

CURA 66169



CURA 68187

CURA 68186

CURA 66167

CURA 66165

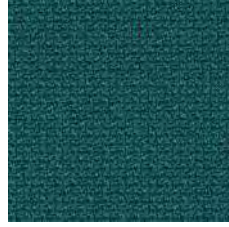
CURA 66170

CURA

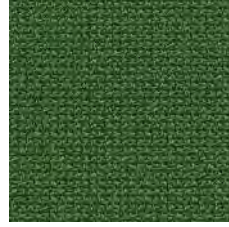
Cura is a multi-purpose, two-coloured upholstery fabric made from 98% post-consumer recycled polyester. Use Cura for office furniture or lounge seating to transform workplaces into homey interiors.

| | |
|---------------------|--|
| Supplier | Gabriel |
| Composition | 98% Recycled Polyester, 2% Polyester |
| Martindale | 100.000 |
| Flammability | BS EN 1021 1&2, CAL 117 |
| Environment | STANDARD 100 by OEKO-TEX®, EU Ecolabel |

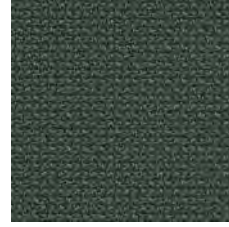
NORR11



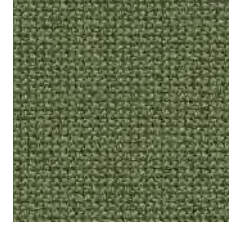
CURA 67084



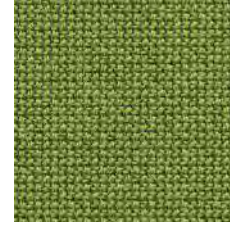
CURA 68183



CURA 68182



CURA 68181



CURA 68180



NORR11



CHILI

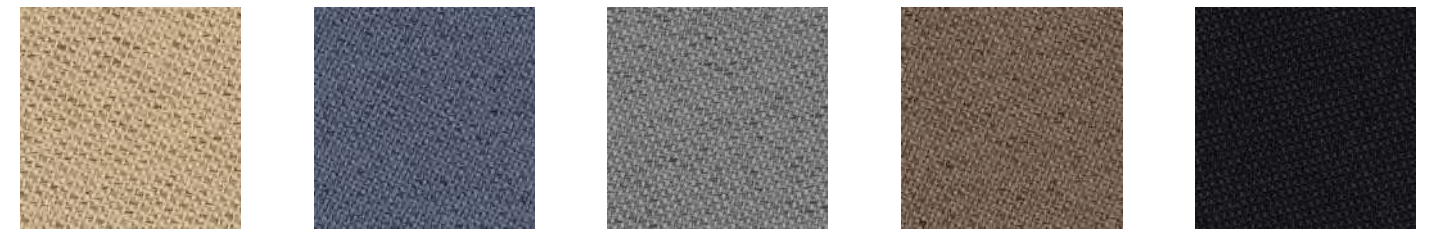
Chili is a pioneering upholstery fabric distinguished by its fusion of sustainable materials and exceptional fire resistance. Made from 100% post-consumer recycled flame retardant polyester, the fabric sets new environmental standards for fire retardant fabrics.

| | |
|---------------------|--|
| Supplier | Gabriel |
| Composition | 100% post-consumer recycled polyester fr (fr inside the fiber) |
| Martindale | 60.000 |
| Flammability | BS EN 1021 1&2, CA TB 117-2013, BS 5852 Crib 5 |
| Environment | STANDARD 100 by OEKO-TEX®, EU Ecolabel |

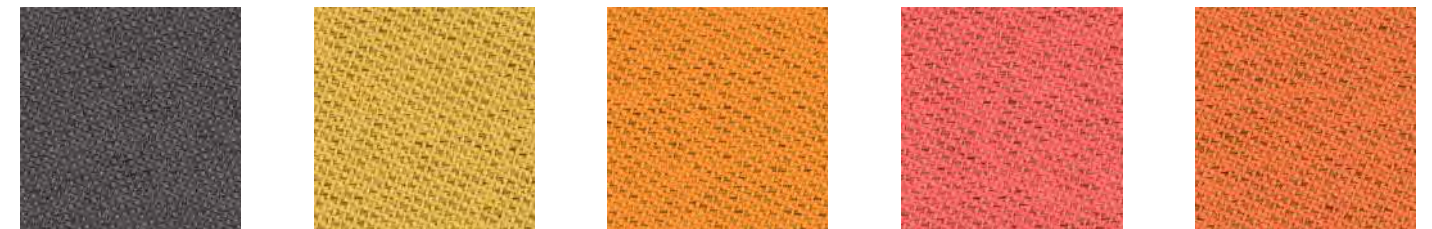
CHILI BY GABRIEL



CHILI 60114 CHILI 60115 CHILI 61174 CHILI 60117 CHILI 60116



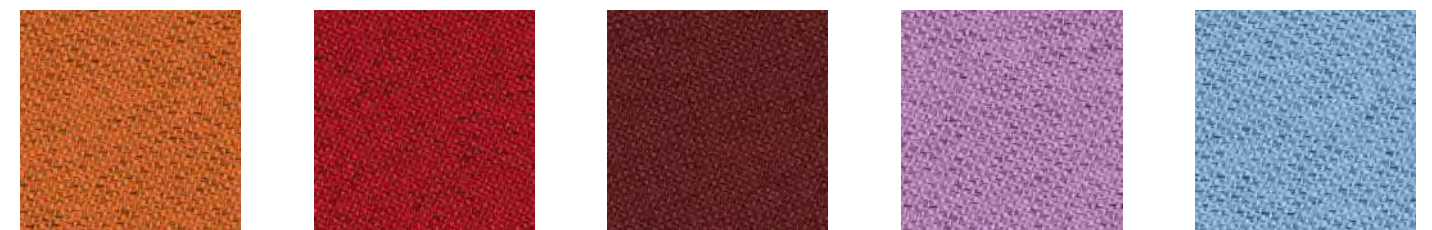
CHILI 61172 CHILI 60081 CHILI 60083 CHILI 61175 CHILI 60999



CHILI 61171 CHILI 62086 CHILI 63093 CHILI 64199 CHILI 63090



CHILI 64200 CHILI 63092 CHILI 61173 CHILI 64201 CHILI 65111



CHILI 63099 CHILI 64202 CHILI 64203 CHILI 65107 CHILI 66172

NORR11



CHILI 64197



CHILI 65108



CHILI 66173



CHILI 64198



CHILI 65109



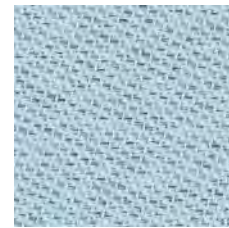
CHILI 66171



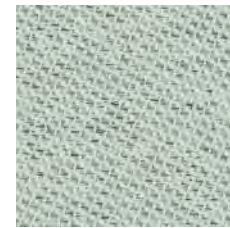
CHILI 65110



CHILI 66174



CHILI 66175



CHILI 68191



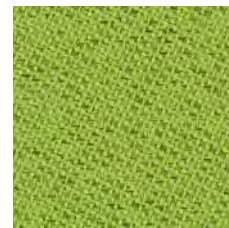
CHILI 68195



CHILI 66176



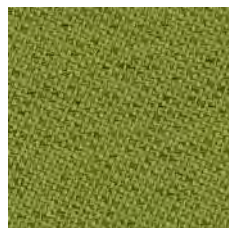
CHILI 68192



CHILI 68196



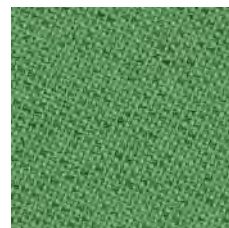
CHILI 67085



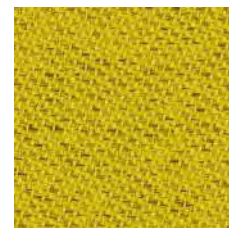
CHILI 68197



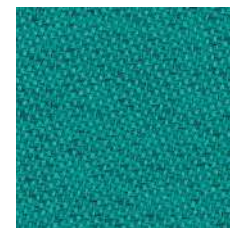
CHILI 68189



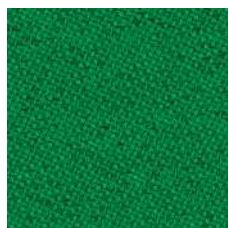
CHILI 68193



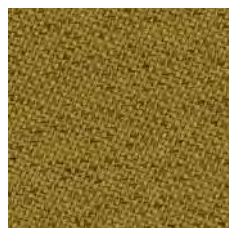
CHILI 62085



CHILI 68190



CHILI 68194



CHILI 68198





STEP MELANGE

Step Melange is a 100 % Trevira CS upholstery textile with a vivid, pixelated expression that creates curiosity and attracts the eye. Where Step Melange features a subtle, heathered effect that brings life, depth, and textural appeal to the surface, the textile also comes in unicoloured version, Step.

| | |
|---------------------|--|
| Supplier | Gabriel |
| Composition | 100% Trevira cs |
| Martindale | 100.000 |
| Flammability | BS EN 1021 1&2, CA TB 117-2013, BS 5852 Crib 5 |
| Environment | STANDARD 100 by OEKO-TEX®, EU Ecolabel |

NORR11

STEP MELANGE BY GABRIEL



STEP MELANGE 61104



STEP MELANGE 61286



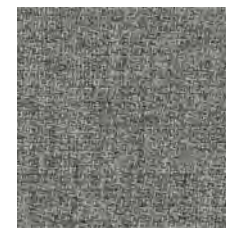
STEP MELANGE 60345



STEP MELANGE 61287



STEP MELANGE 61288



STEP MELANGE 60004



STEP MELANGE 61149



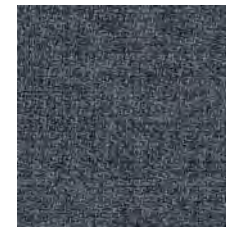
STEP MELANGE 61293



STEP MELANGE 61289



STEP MELANGE 60011



STEP MELANGE 66152



STEP MELANGE 61152



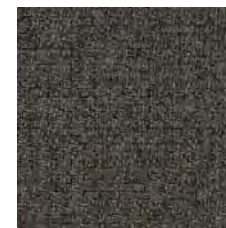
STEP MELANGE 61291



STEP MELANGE 66148



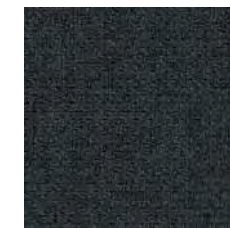
STEP MELANGE 60092



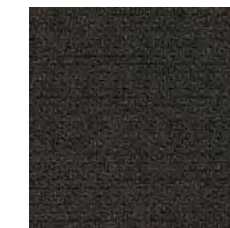
STEP MELANGE 60090



STEP MELANGE 66265



STEP MELANGE 66019



STEP MELANGE 60021



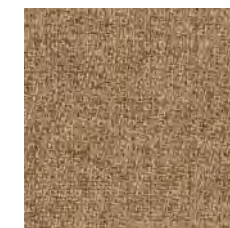
STEP MELANGE 64267



STEP MELANGE 62143



STEP MELANGE 61151



STEP MELANGE 63136



STEP MELANGE 63139



STEP MELANGE 64178



STEP MELANGE 63082



STEP MELANGE 64179



STEP MELANGE 62144



STEP MELANGE 63138



STEP MELANGE 64013



STEP MELANGE 62146



STEP MELANGE 63137



STEP MELANGE 64159



STEP MELANGE 62057



STEP MELANGE 63075



STEP MELANGE 65047



STEP MELANGE 61103



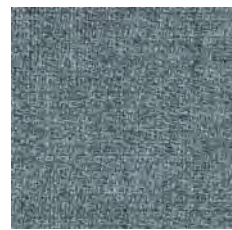
STEP MELANGE 64270



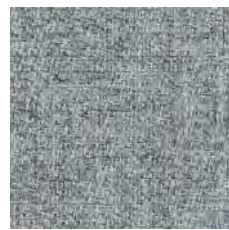
STEP MELANGE 65023



STEP MELANGE 66151



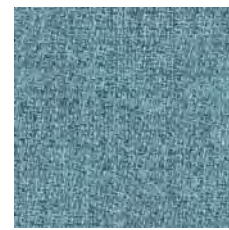
STEP MELANGE 67004



STEP MELANGE 60346



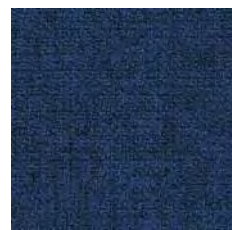
STEP MELANGE 66150



STEP MELANGE 67135



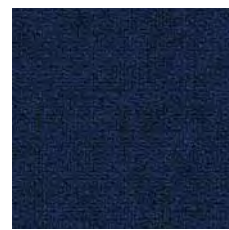
STEP MELANGE 67072



STEP MELANGE 66149



STEP MELANGE 66018



STEP MELANGE 65018



STEP MELANGE 66263



STEP MELANGE 67007



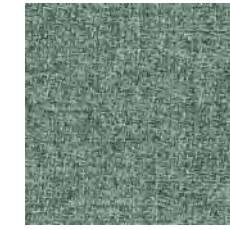
STEP MELANGE 65011



STEP MELANGE 66264



STEP MELANGE 68158



STEP MELANGE 68118



STEP MELANGE 68163



STEP MELANGE 68159



STEP MELANGE 68162



STEP MELANGE 68119



STEP MELANGE 68120



STEP MELANGE 68298



STEP MELANGE 62073



STEP MELANGE 68161



STEP MELANGE 68299



STEP MELANGE 68301



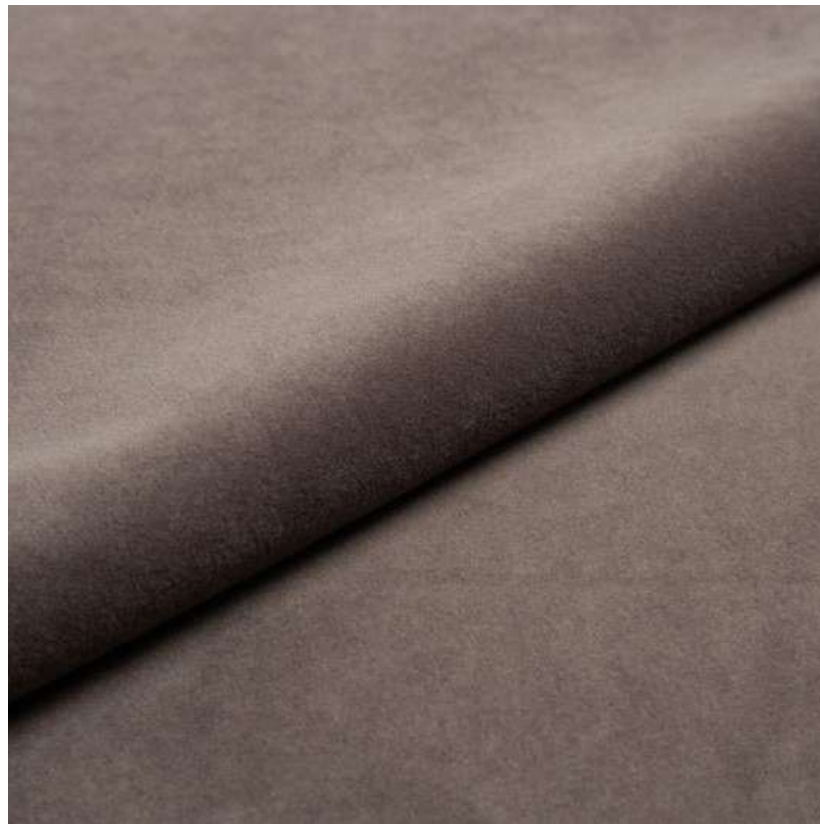
STEP MELANGE 68121



STEP MELANGE 68300



STEP MELANGE 68165

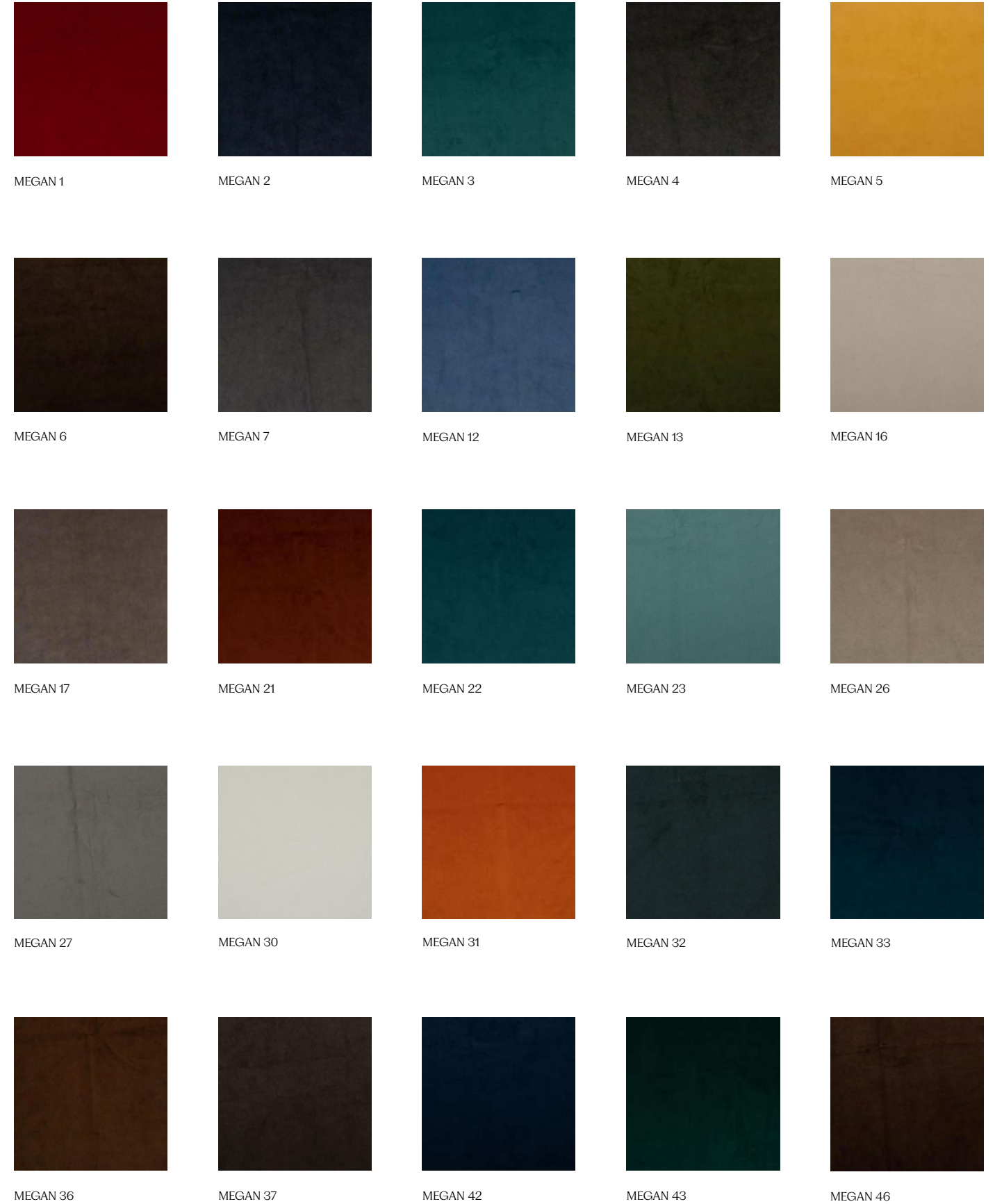


MEGAN

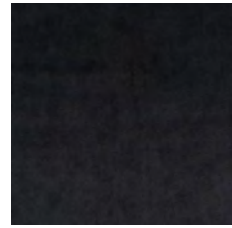
Megan is a velvet in a sparkling color scheme. High, straight standing piles in a durable quality for all types of environments.

| | |
|---------------------|--|
| Supplier | Nevotex |
| Composition | 100% Polyester |
| Martindale | 170.000 |
| Flammability | BS 5852-1 Source 0 & 1, Cal TB 117, EN 1021-1 & 2, IMO 2010 FTP Code part 8 |
| Environment | STANDARD 100 by OEKO-TEX® |

MEGAN BY NEVOTEX



NORR11



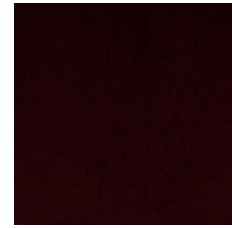
MEGAN 47



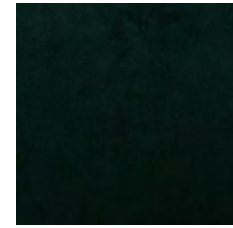
MEGAN 52



MEGAN 53



MEGAN 61



MEGAN 70



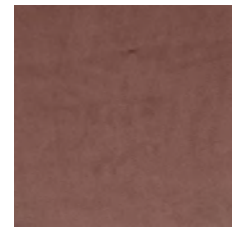
MEGAN 73



MEGAN 75



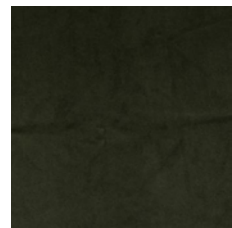
MEGAN 79



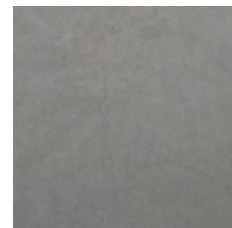
MEGAN 81



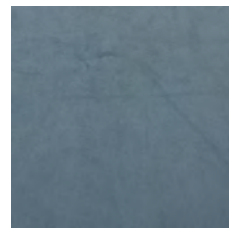
MEGAN 90



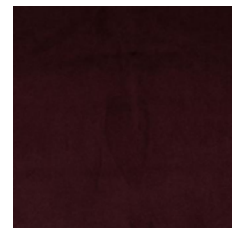
MEGAN 104



MEGAN 108



MEGAN 110



MEGAN 123



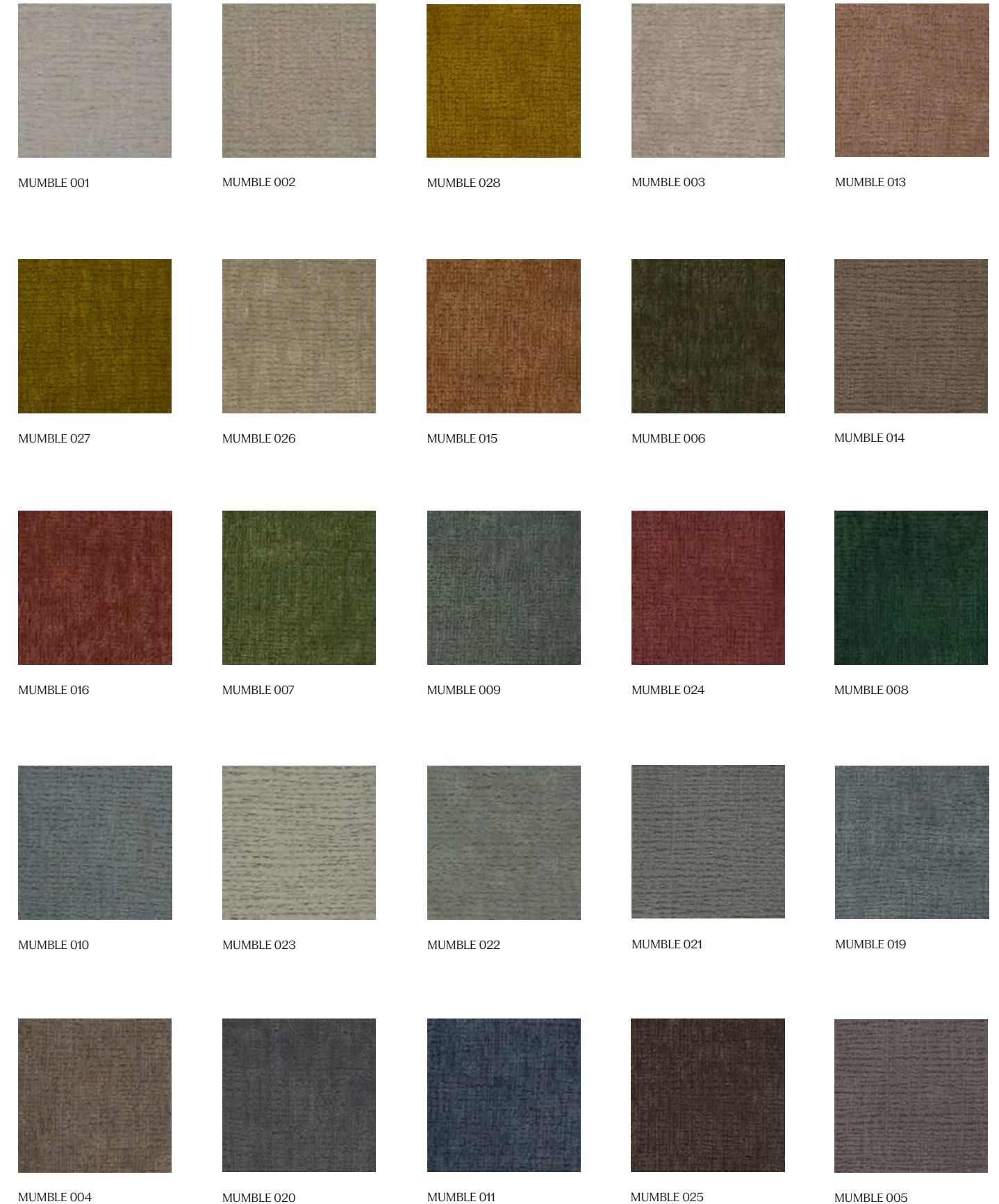


MUMBLE

Mumble is a chenille fabric made from 100% recycled PET yarn. The obtained fabric is very soft to the touch, particularly resistant and able to maintain its characteristics unchanged over time. With a contemporary design, it presents a wide color range with natural tones.

| | |
|---------------------|--------------------------------|
| Supplier | Glamour |
| Composition | 72% RPET, 28% PL |
| Martindale | 50.000 |
| Flammability | BS EN 1021 1, CA TB 117-2013 |
| Environment | GRS, STANDARD 100 by OEKO-TEX® |

MUMBLE BY GLAMOUR



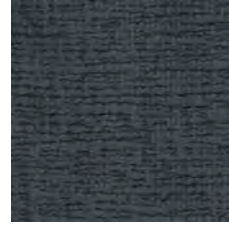
NORR11



MUMBLE 018



MUMBLE 030



MUMBLE 012



MUMBLE 032

NORR11





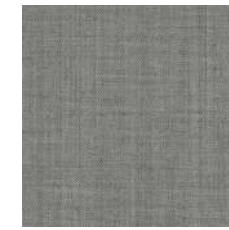
REMIX 3

Remix 3 is an elegant upholstery textile distinguished by exceptional depth of colour. Remix 3 looks unicoloured from a distance but reveals subtle details and colour contrasts when viewed close-up. The textile features a tight, minimalistic weave, and derives its lively colour play from a combination of two different mélangé yarns, which each combine up to three hues.

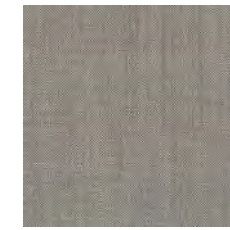
| | |
|---------------------|--|
| Supplier | Kvadrat |
| Composition | 90% New Wool Worsted, 10% Nylon |
| Martindale | 100.000 |
| Flammability | CAL 117, BS5852 part 1 |
| Environment | EU Ecolabel, Greenguard Gold, HPD, EPD |



REMIX 3 0113



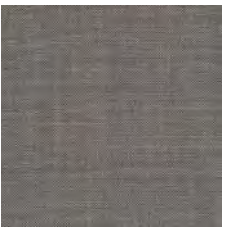
REMIX 3 0123



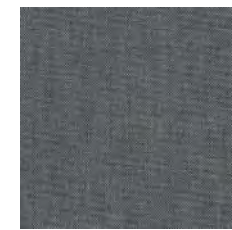
REMIX 3 0126



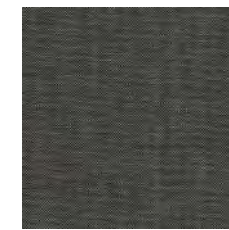
REMIX 3 0133



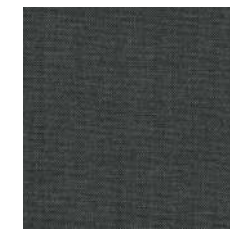
REMIX 3 0136



REMIX 3 0143



REMIX 3 0152



REMIX 3 0163



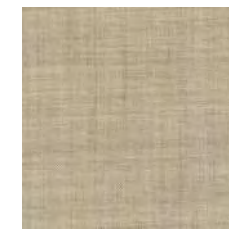
REMIX 3 0173



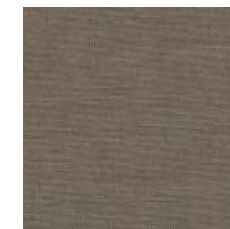
REMIX 3 0183



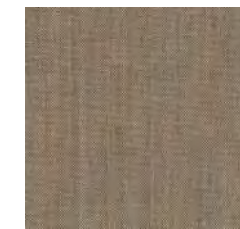
REMIX 3 0196



REMIX 3 0223



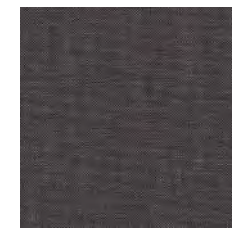
REMIX 3 0233



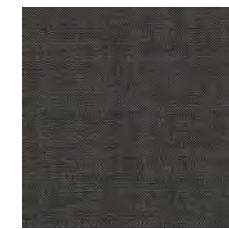
REMIX 3 0242



REMIX 3 0252



REMIX 3 0266



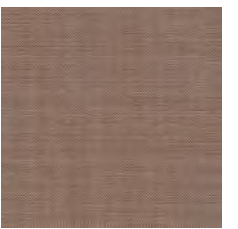
REMIX 3 0276



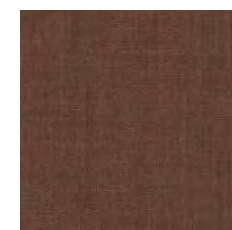
REMIX 3 0286



REMIX 3 0296



REMIX 3 0326



REMIX 3 0346



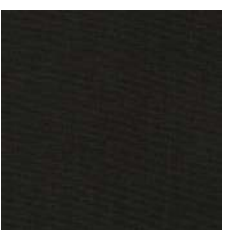
REMIX 3 0356



REMIX 3 0362



REMIX 3 0373



REMIX 3 0383



REMIX 3 0393



REMIX 3 0406



REMIX 3 0412



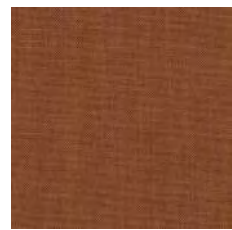
REMIX 3 0422



REMIX 3 0433



REMIX 3 0443



REMIX 3 0452



REMIX 3 0516



REMIX 3 0536



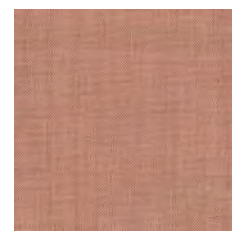
REMIX 3 0543



REMIX 3 0566



REMIX 3 0606



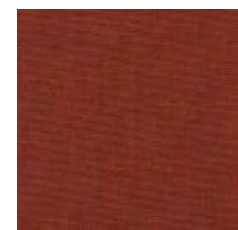
REMIX 3 0612



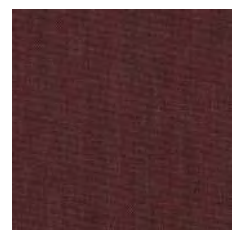
REMIX 3 0632



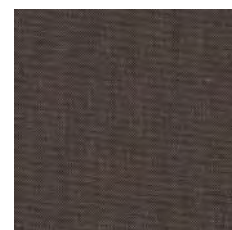
REMIX 3 0643



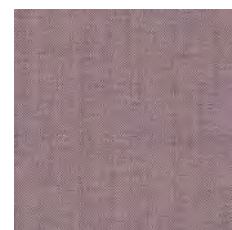
REMIX 3 0653



REMIX 3 0662



REMIX 3 0672



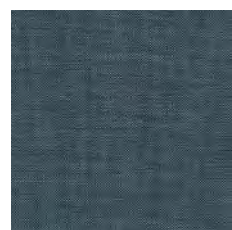
REMIX 3 0682



REMIX 3 0686



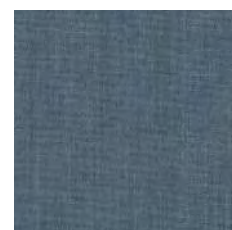
REMIX 3 0692



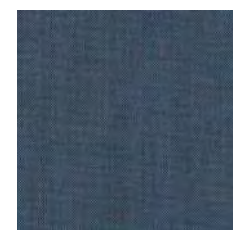
REMIX 3 0716



REMIX 3 0722



REMIX 3 0733



REMIX 3 0743



REMIX 3 0753



REMIX 3 0762



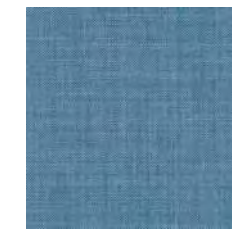
REMIX 3 0773



REMIX 3 0783



REMIX 3 0796



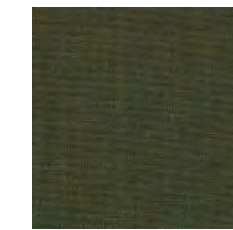
REMIX 3 0816



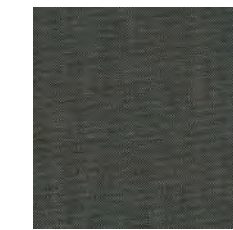
REMIX 3 0823



REMIX 3 0836



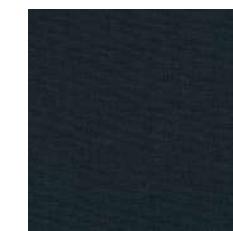
REMIX 3 0842



REMIX 3 0852



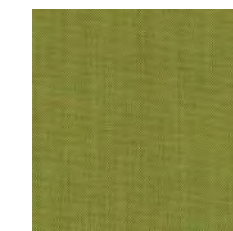
REMIX 3 0866



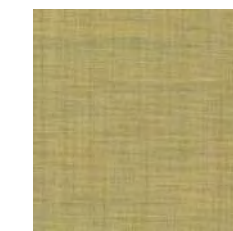
REMIX 3 0873



REMIX 3 0906



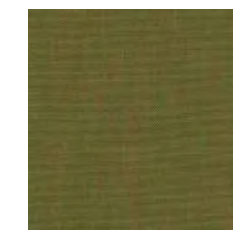
REMIX 3 0912



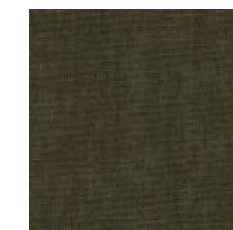
REMIX 3 0923



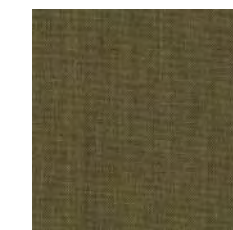
REMIX 3 0933



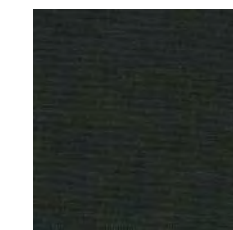
REMIX 3 0942



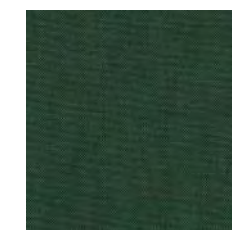
REMIX 3 0954



REMIX 3 0962



REMIX 3 0973



REMIX 3 0982



REMIX 3 0996

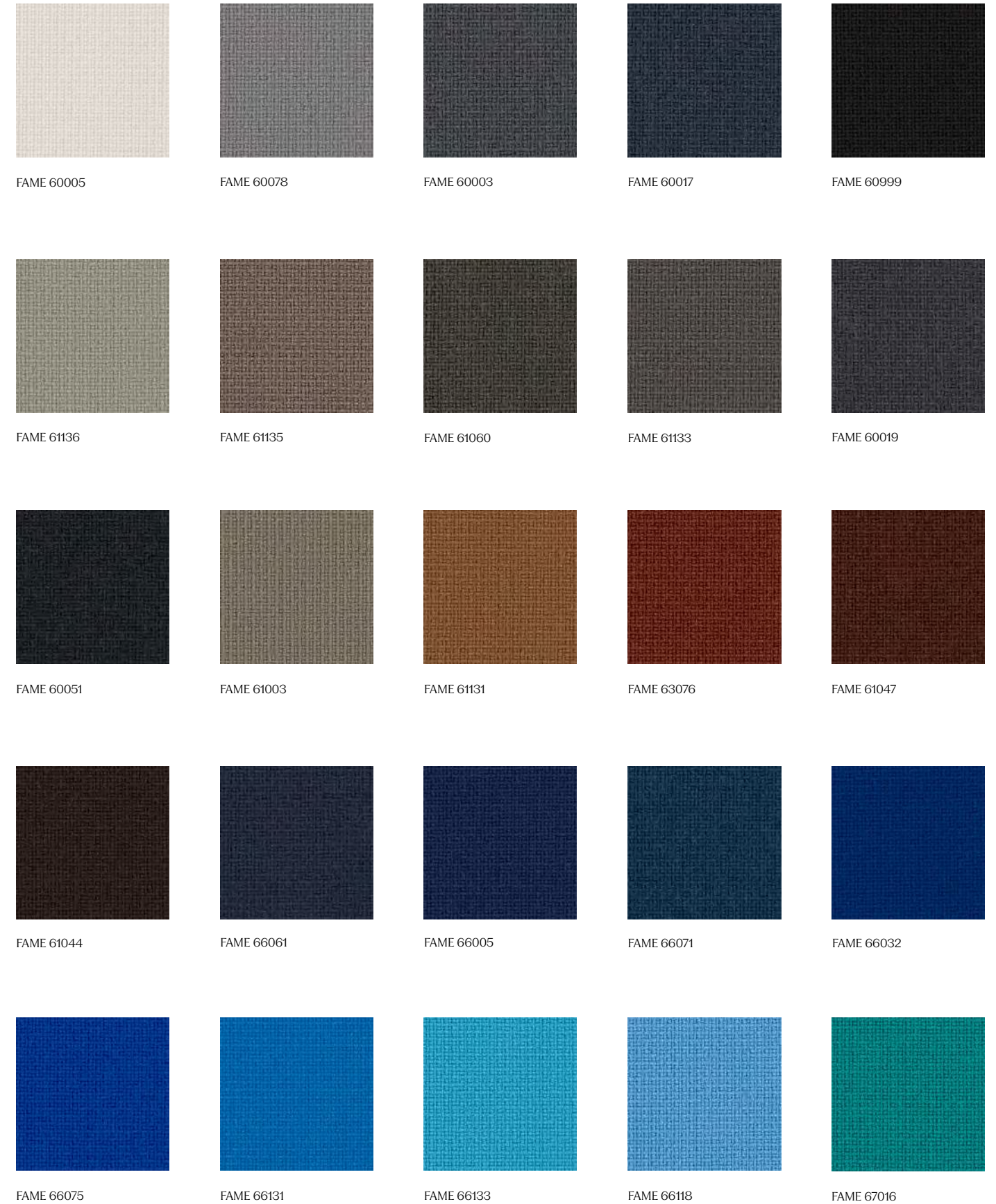


FAME

Fame is a unique woollen upholstery fabric with a wearability of 200,000 Martindale, and at the same time is extra soft and stretchable. The colour scale is very elegant and vibrant.

| | |
|---------------------|---|
| Supplier | Gabriel |
| Composition | 95% New Zealand Wool, 5% Polyamide |
| Martindale | 200.000 |
| Flammability | BS EN 1021 1&2, BS5852 0&1, CAL 117, CRIB 5 |
| Environment | STANDARD 100 by OEKO-TEX®, EU Ecolabel |

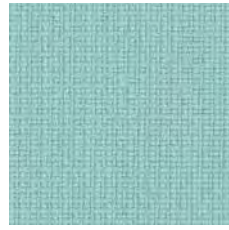
FAME BY GABRIEL



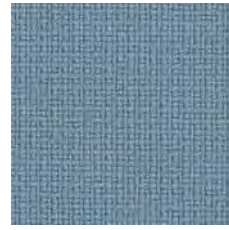
NORR11



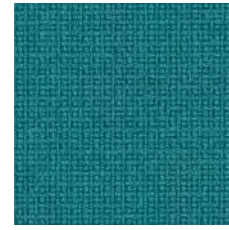
FAME 67004



FAME 67068



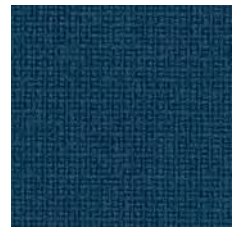
FAME 66130



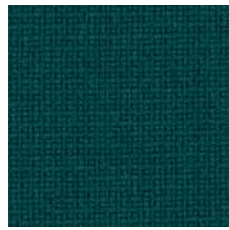
FAME 67067



FAME 67069



FAME 67005



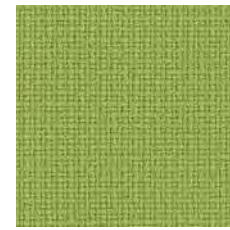
FAME 68143



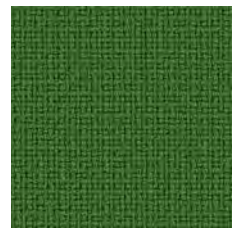
FAME 61134



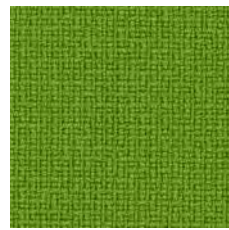
FAME 68148



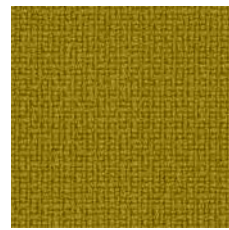
FAME 68145



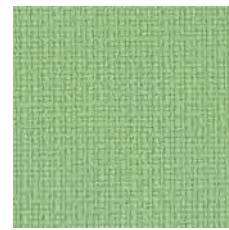
FAME 68146



FAME 68035



FAME 68004



FAME 68147



FAME 62067



FAME 63077



FAME 63016



FAME 63078



FAME 64165



FAME 64169



FAME 64166



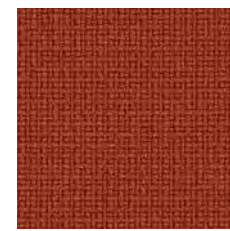
FAME 64119



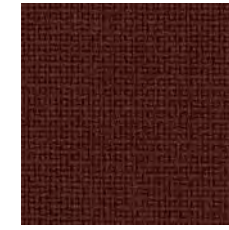
FAME 64089



FAME 64058



FAME 64168



FAME 64167



FAME 61108



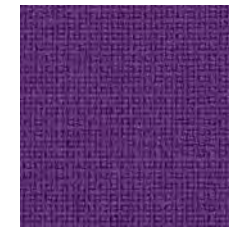
FAME 64055



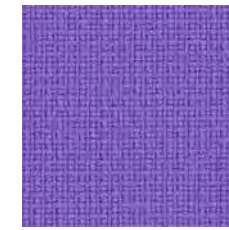
FAME 65082



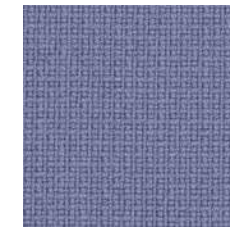
FAME 66132



FAME 65084



FAME 65083



FAME 65081



BARNUM

Barnum by Glamour is a textured bouclé wool with a comfortable soft feel and is available in a various attractive colors. The fabric is durable and heavy enough to offer some acoustic absorption but soft enough to provide wamness and comfort.

| | |
|---------------------|--|
| Supplier | Glamour |
| Composition | 45% Cotton, 19% Viscose, 15% Wool, 13% Acetate, 8% Nylon |
| Martindale | 60.000 |
| Flammability | BS 5852-1:1979, BS 5852-1:1979, TB 117:2013 |
| Environment | STANDARD 100 by OEKO-TEX® |

BARNUM BY GLAMOUR



BARNUM 001



BARNUM 002



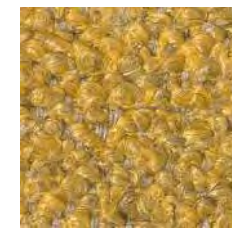
BARNUM 003



BARNUM 004



BARNUM 005



BARNUM 006



BARNUM 007



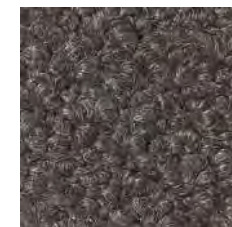
BARNUM 008



BARNUM 009



BARNUM 010



BARNUM 011



BARNUM 012



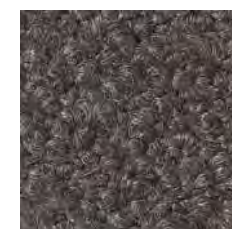
BARNUM 013



BARNUM 014



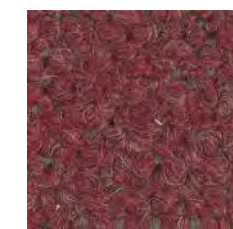
BARNUM 015



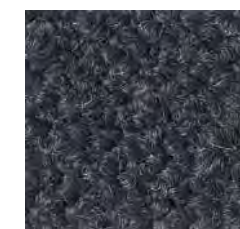
BARNUM 016



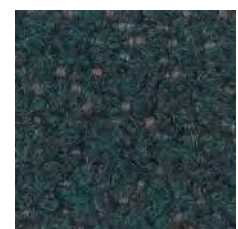
BARNUM 017



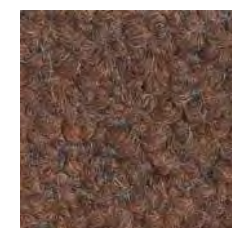
BARNUM 018



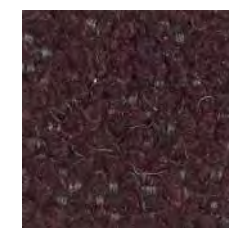
BARNUM 019



BARNUM 020



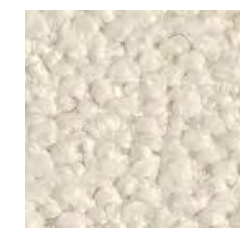
BARNUM 021



BARNUM 022



BARNUM 023



BARNUM 024

NORR11





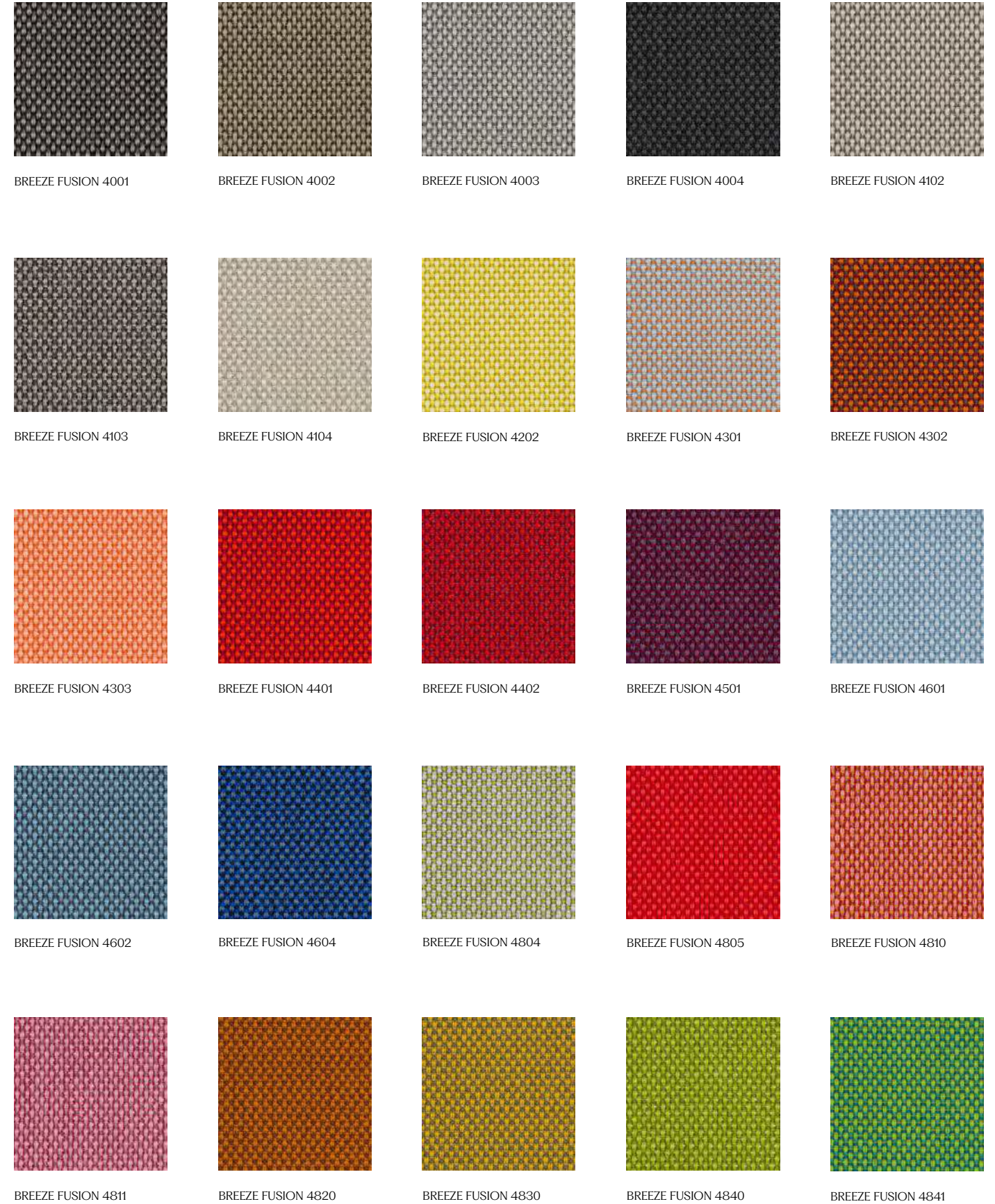
BREEZE FUSION

Breeze Fusion is a richly textured, woollen upholstery fabric brought to life by intriguing colour blends. It offers superior durability, inherent fire resistance and a strong environmental profile.

| | |
|---------------------|---|
| Supplier | Gabriel |
| Composition | 88% New Zealand Wool, 12% Polyamide |
| Martindale | 100.000 |
| Flammability | BS 5852 Part 1 0,1 Cigarette & Match, BS EN 1021 1&2 Cigarette & Match, CA TB 117-2013, Class Uno UNI 9175 Class 1 I EMME |
| Environment | STANDARD 100 by OEKO-TEX®, EU Ecolabel |

NORR11

BREEZE FUSION BY GABRIEL

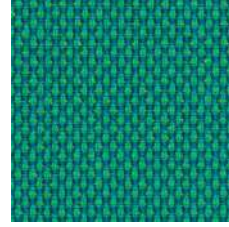




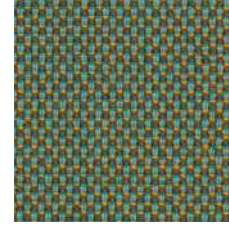
BREEZE FUSION 4850



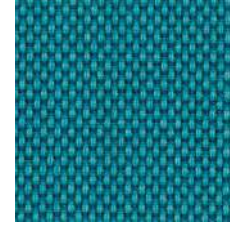
BREEZE FUSION 4851



BREEZE FUSION 4860



BREEZE FUSION 4870



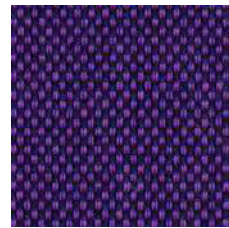
BREEZE FUSION 4871



BREEZE FUSION 4880



BREEZE FUSION 4890



BREEZE FUSION 4900



BREEZE FUSION 4910



BREEZE FUSION 4920



BREEZE FUSION 4930



BREEZE FUSION 4931



BREEZE FUSION 4932



BREEZE FUSION 4933



BREEZE FUSION 4934



BREEZE FUSION 4935



BREEZE FUSION 4936



BREEZE FUSION 4937



BREEZE FUSION 4938





CANVAS 2

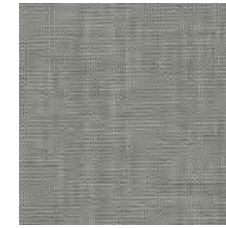
Canvas 2 is a vibrant woollen upholstery textile. Particularly well-suited to large surfaces thanks to its pronounced structure, it features a soft weave and an expanded palette inspired by the landscapes of Skagen, Denmark. The melange yarn used to craft Canvas 2 combines three colours, with six hues in every colourway. Consequently, the textile offers exceptional colour richness and an intriguing expression.

| | |
|---------------------|--|
| Supplier | Kvadrat |
| Composition | 90% New Wool Worsted, 10% Nylon |
| Martindale | 100.000 |
| Flammability | BS5852 part 1, CAL 117 |
| Environment | EU Ecolabel, Greenguard Gold, HPD, EPD |

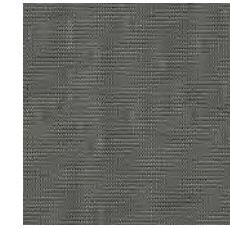
CANVAS 2 BY KVADRAT



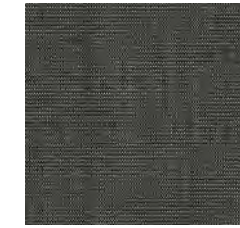
CANVAS 2 0114



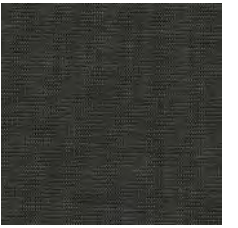
CANVAS 2 0124



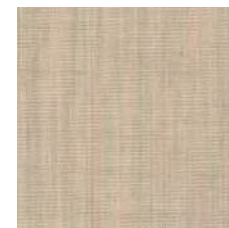
CANVAS 2 0134



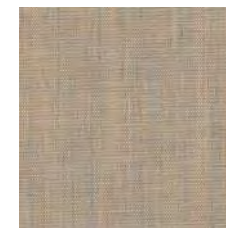
CANVAS 2 0154



CANVAS 2 0174



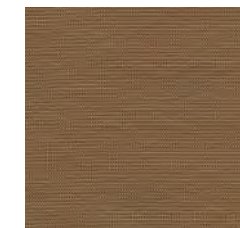
CANVAS 2 0216



CANVAS 2 0224



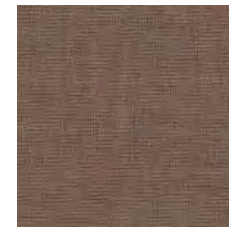
CANVAS 2 0244



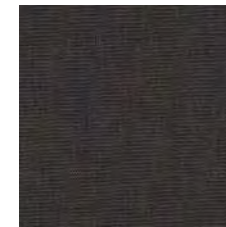
CANVAS 2 0254



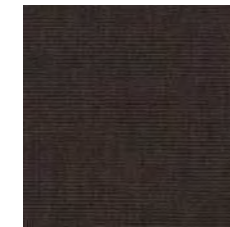
CANVAS 2 0264



CANVAS 2 0356



CANVAS 2 0364



CANVAS 2 0374



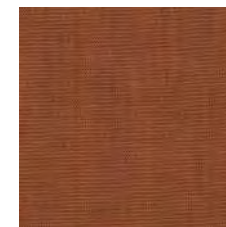
CANVAS 2 0414



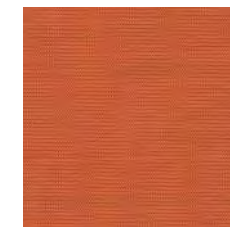
CANVAS 2 0424



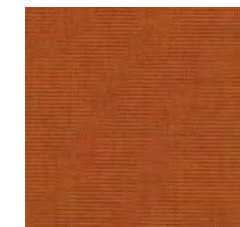
CANVAS 2 0446



CANVAS 2 0454



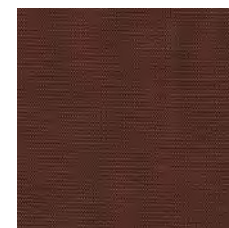
CANVAS 2 0546



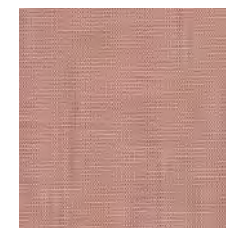
CANVAS 2 0556



CANVAS 2 0566



CANVAS 2 0576



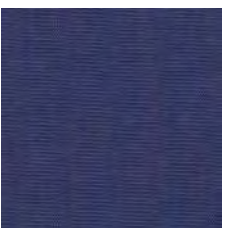
CANVAS 2 0614



CANVAS 2 0644



CANVAS 2 0654



CANVAS 2 0666

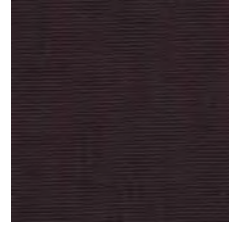
NORR11



CANVAS 2 0674



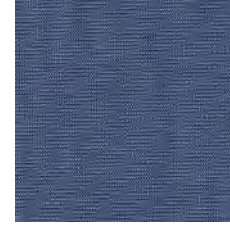
CANVAS 2 0684



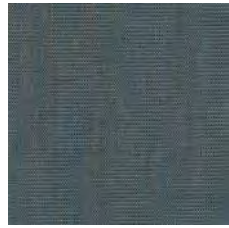
CANVAS 2 0694



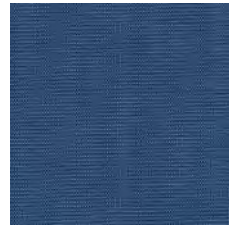
CANVAS 2 0716



CANVAS 2 0726



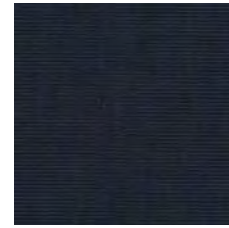
CANVAS 2 0734



CANVAS 2 0746



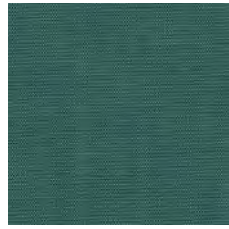
CANVAS 2 0764



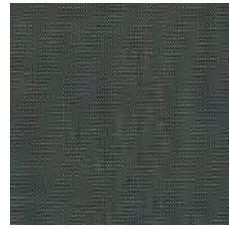
CANVAS 2 0786



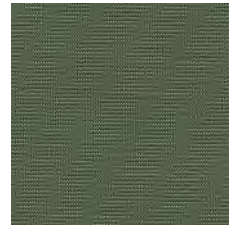
CANVAS 2 0794



CANVAS 2 0836



CANVAS 2 0854



CANVAS 2 0926



CANVAS 2 0936



CANVAS 2 0946



CANVAS 2 0954



CANVAS 2 0964



CANVAS 2 0974



CANVAS 2 0984



CANVAS 2 0996



NORR11

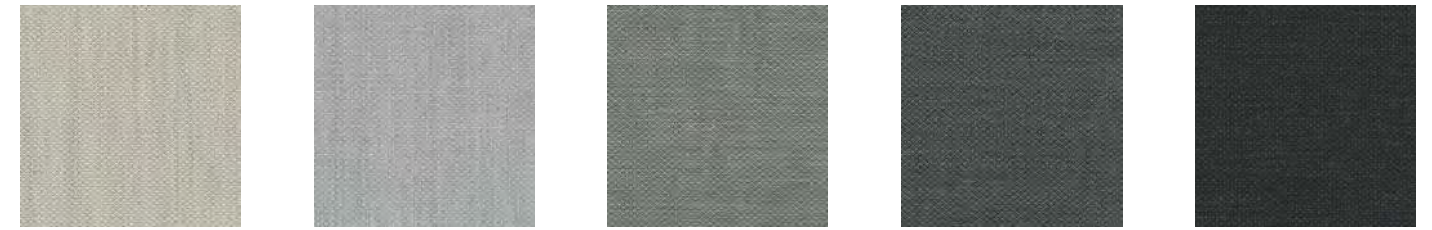


FIORD 2

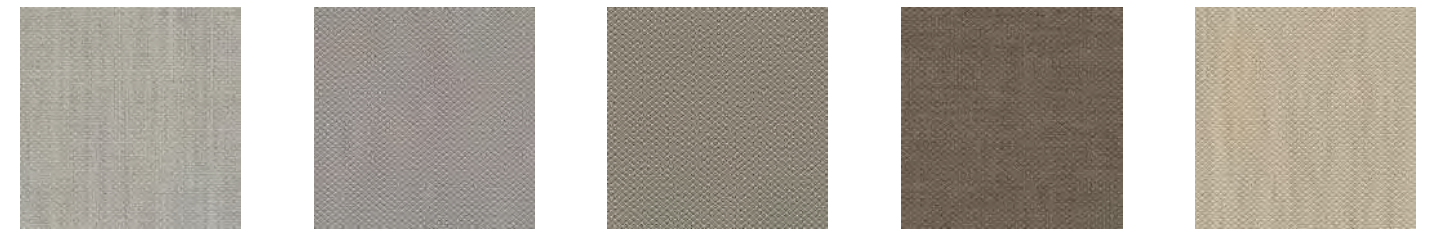
Fiord 2 is a versatile woollen upholstery textile with a subtle three-dimensional look. The construction of Fiord 2 combines a mélangé yarn with a unicoloured yarn that creates pearl-like dots that play across the textile's surface. This sophisticated expression reflects a key source of inspiration behind the design: moonlight glittering like pearls on the rippling waters of a Norwegian fjord.

| | |
|---------------------|--|
| Supplier | Kvadrat |
| Composition | 92% New Wool Worsted, 8% Nylon |
| Martindale | 60.000 |
| Flammability | BS5852 part 1, CAL 117 |
| Environment | EU Ecolabel, Greenguard Gold, HPD, EPD |

FIORD 2 BY KVADRAT



FIORD 2 0101 FIORD 2 0121 FIORD 2 0151 FIORD 2 0171 FIORD 2 0191



FIORD 2 0201 FIORD 2 0251 FIORD 2 0262 FIORD 2 0271 FIORD 2 0322



FIORD 2 0351 FIORD 2 0371 FIORD 2 0382 FIORD 2 0391 FIORD 2 0422



FIORD 2 0442 FIORD 2 0451 FIORD 2 0521 FIORD 2 0551 FIORD 2 0562



FIORD 2 0571 FIORD 2 0581 FIORD 2 0591 FIORD 2 0642 FIORD 2 0662

NORR11



FIORD 2 0672



FIORD 2 0771



FIORD 2 0782



FIORD 2 0791



FIORD 2 0821



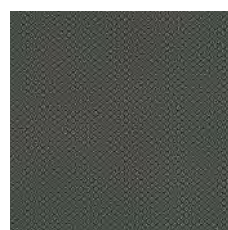
FIORD 2 0862



FIORD 2 0951



FIORD 2 0961



FIORD 2 0971



FIORD 2 0981



FIORD 2 0991

NORR11





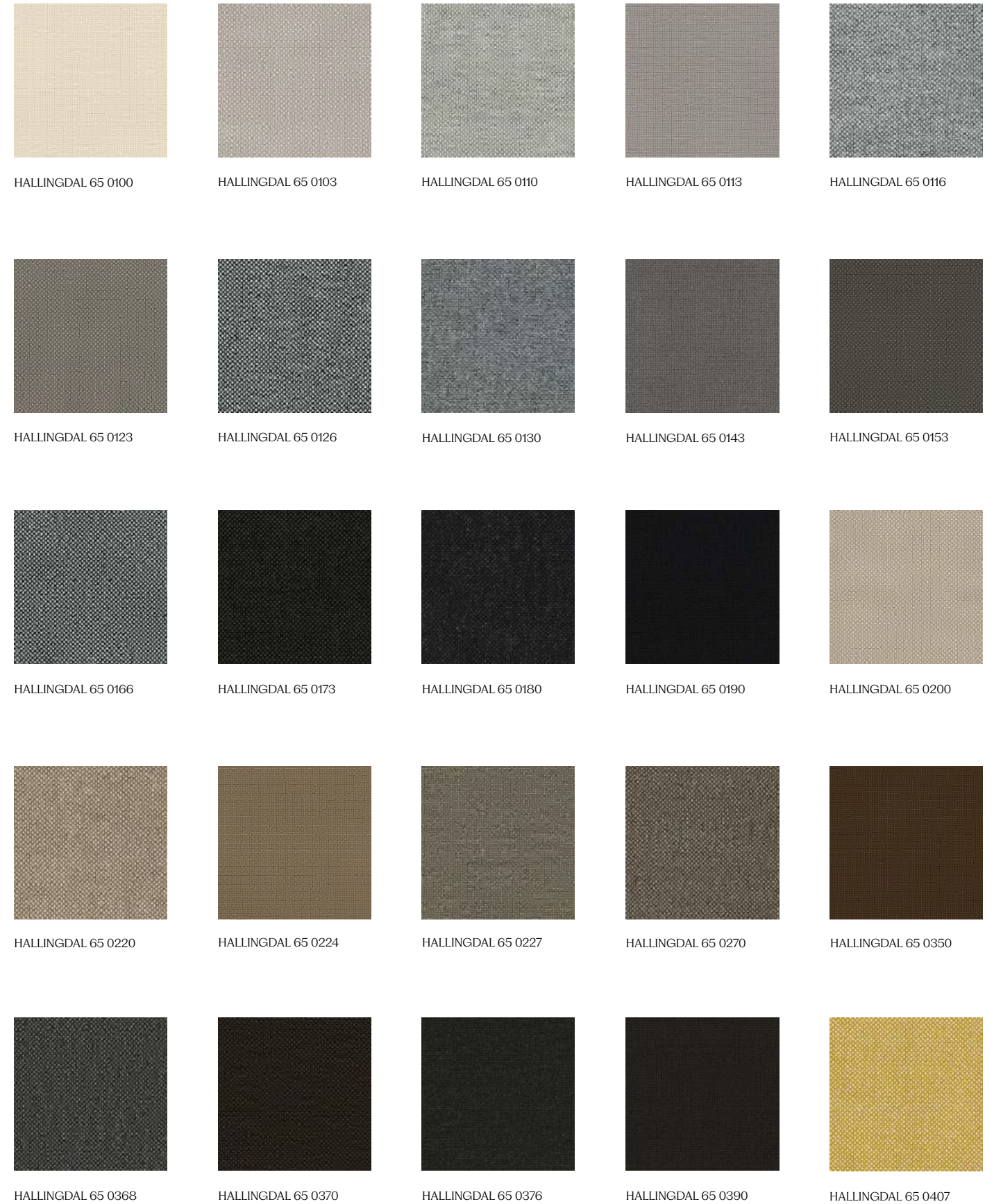
HALLINGDAL 65

Kvadrat's first textile Hallingdal has become the archetype of woollen textiles. Hallingdal 65 is made of wool and viscose, which complement each other well: the wool provides excellent durability and flexibility, whilst the viscose adds brilliance and depth to the colour. Both materials are dyed before they are spun, which highlights the rich texture of the fabric.

| | |
|---------------------|--|
| Supplier | Kvadrat |
| Composition | 70% New Wool, 30% Viscose |
| Martindale | 100.000 |
| Flammability | EN 1021-1/2 , BS 5852 part 1, Crib 5 |
| Environment | EU Ecolabel, Greenguard Gold, HPD, EPD |

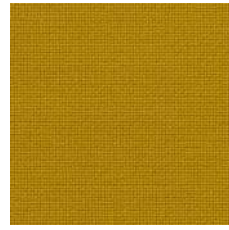
NORR11

HALLINGDAL 65 BY KVADRAT

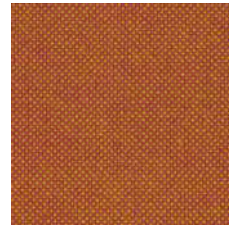




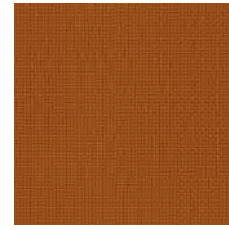
HALLINGDAL 65 0420



HALLINGDAL 65 0457



HALLINGDAL 65 0526



HALLINGDAL 65 0547



HALLINGDAL 65 0563



HALLINGDAL 65 0573



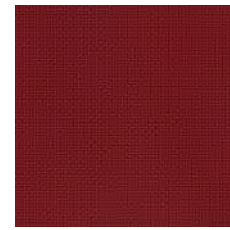
HALLINGDAL 65 0590



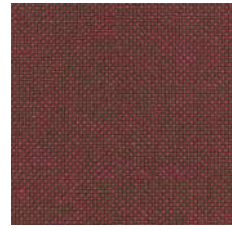
HALLINGDAL 65 0596



HALLINGDAL 65 0600



HALLINGDAL 65 0657



HALLINGDAL 65 0660



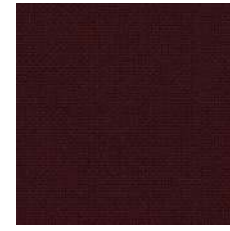
HALLINGDAL 65 0674



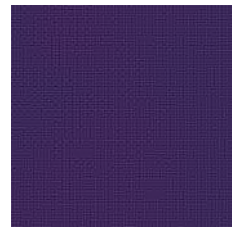
HALLINGDAL 65 0680



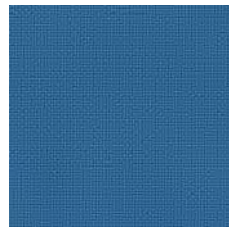
HALLINGDAL 65 0687



HALLINGDAL 65 0694



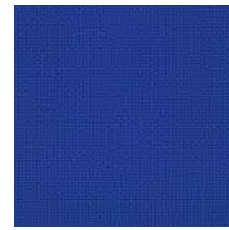
HALLINGDAL 65 0702



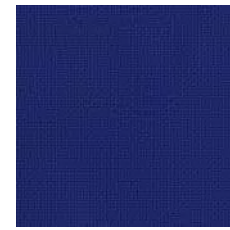
HALLINGDAL 65 0723



HALLINGDAL 65 0733



HALLINGDAL 65 0750



HALLINGDAL 65 0753



HALLINGDAL 65 0754



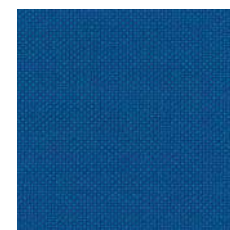
HALLINGDAL 65 0763



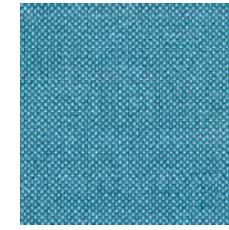
HALLINGDAL 65 0764



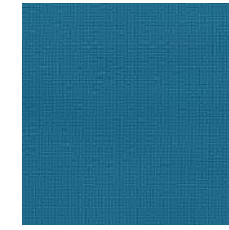
HALLINGDAL 65 0773



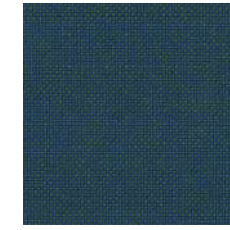
HALLINGDAL 65 0810



HALLINGDAL 65 0840



HALLINGDAL 65 0850



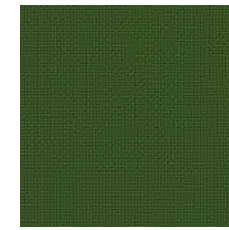
HALLINGDAL 65 0890



HALLINGDAL 65 0907



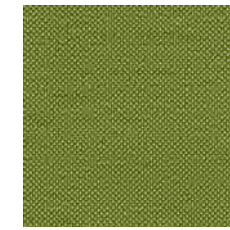
HALLINGDAL 65 0944



HALLINGDAL 65 0960



HALLINGDAL 65 0968



HALLINGDAL 65 0980

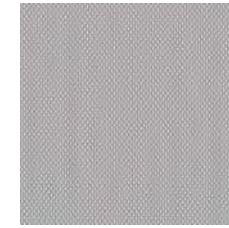


STEELCUT TRIO 3

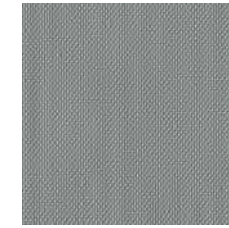
The three-dimensional surface of Steelcut Trio 3 resembles small pyramids or steel points. Despite the complexity of the textile's innovative weave, it has a simple, precise expression. Steelcut Trio 3 is yarn-dyed and made from 3 differently coloured yarns.

| | |
|---------------------|--|
| Supplier | Kvadrat |
| Composition | 90% New Wool Worsted, 10% Nylon |
| Martindale | 100.000 |
| Flammability | EN 1021-1/2, BS5852 part 1, CAL 117 |
| Environment | EU Ecolabel, Greenguard Gold, HPD, EPD |

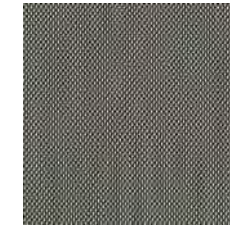
STEELCUT TRIO 3 BY KVADRAT



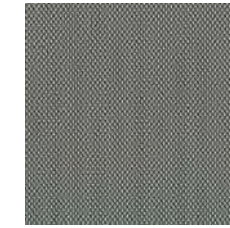
STEELCUT TRIO 0105



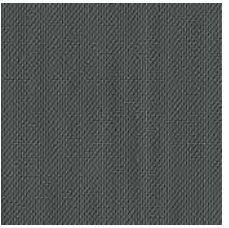
STEELCUT TRIO 0113



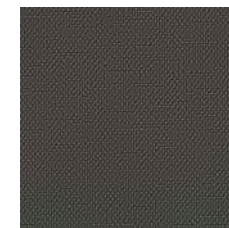
STEELCUT TRIO 0124



STEELCUT TRIO 0133



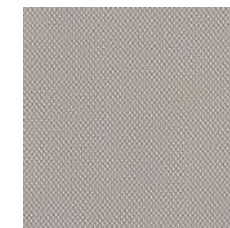
STEELCUT TRIO 0153



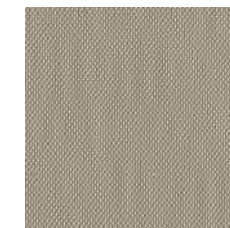
STEELCUT TRIO 0176



STEELCUT TRIO 0195



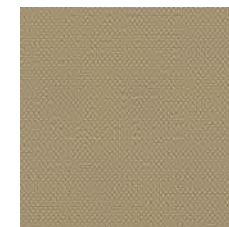
STEELCUT TRIO 0205



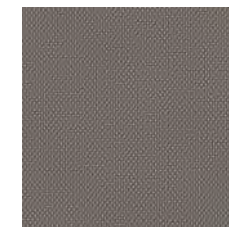
STEELCUT TRIO 0213



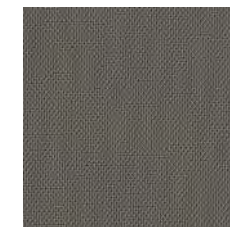
STEELCUT TRIO 0226



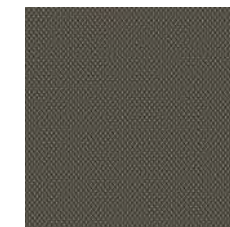
STEELCUT TRIO 0236



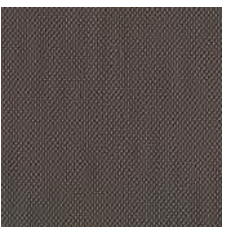
STEELCUT TRIO 0246



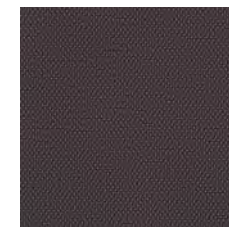
STEELCUT TRIO 0253



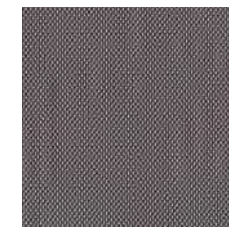
STEELCUT TRIO 0266



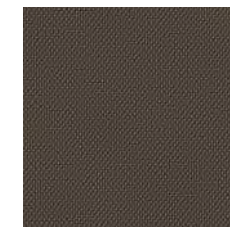
STEELCUT TRIO 0276



STEELCUT TRIO 0283



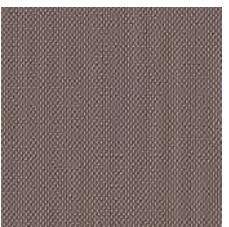
STEELCUT TRIO 0336



STEELCUT TRIO 0376



STEELCUT TRIO 0383



STEELCUT TRIO 0416



STEELCUT TRIO 0426



STEELCUT TRIO 0436



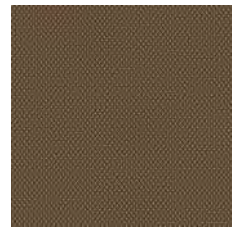
STEELCUT TRIO 0446



STEELCUT TRIO 0453



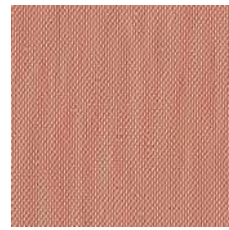
STEELCUT TRIO 0466



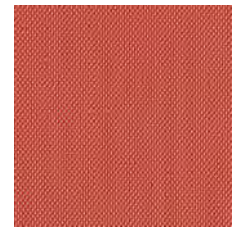
STEELCUT TRIO 0476



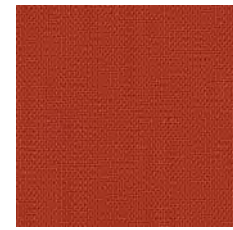
STEELCUT TRIO 0506



STEELCUT TRIO 0515



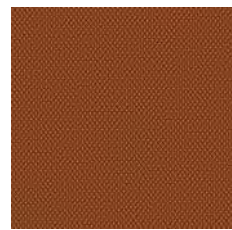
STEELCUT TRIO 0526



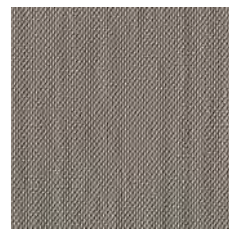
STEELCUT TRIO 0533



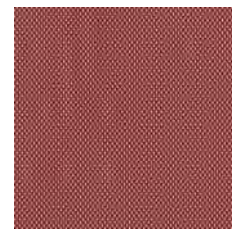
STEELCUT TRIO 0553



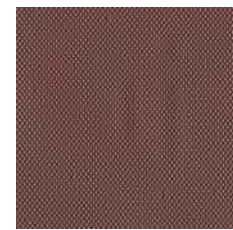
STEELCUT TRIO 0576



STEELCUT TRIO 0616



STEELCUT TRIO 0636



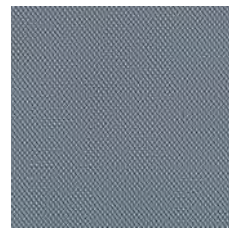
STEELCUT TRIO 0645



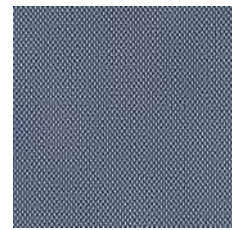
STEELCUT TRIO 0666



STEELCUT TRIO 0686



STEELCUT TRIO 0713



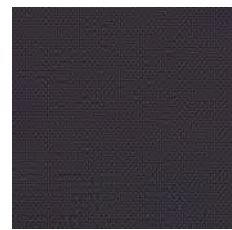
STEELCUT TRIO 0716



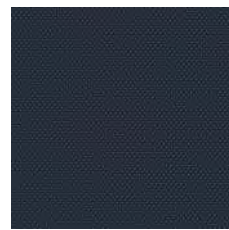
STEELCUT TRIO 0746



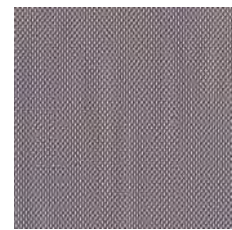
STEELCUT TRIO 0756



STEELCUT TRIO 0776



STEELCUT TRIO 0796



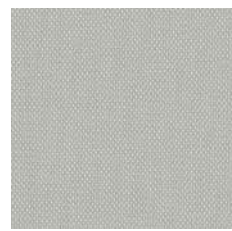
STEELCUT TRIO 0806



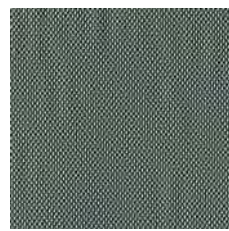
STEELCUT TRIO 0865



STEELCUT TRIO 0883



STEELCUT TRIO 0906



STEELCUT TRIO 0916



STEELCUT TRIO 0946



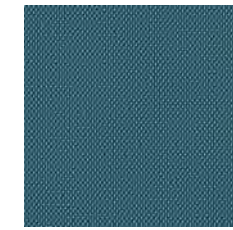
STEELCUT TRIO 0953



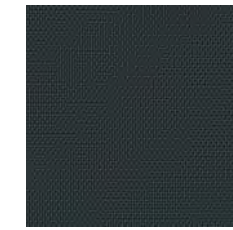
STEELCUT TRIO 0966



STEELCUT TRIO 0976



STEELCUT TRIO 0983



STEELCUT TRIO 0996



SAVANNA

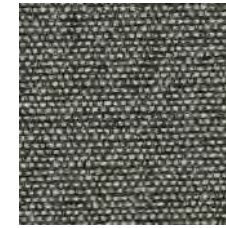
Savanna by Kvadrat is an upholstery textile, which combines different types of yarns and materials to offer distinctive depth and richness. The textile fuses shiny yarns, matt yarns and bouclé yarns. As a result, it features a rich, irregular surface, which reveals an eye-catching play of details when seen from close up.

| | |
|---------------------|---|
| Supplier | Kvadrat |
| Composition | 34% Polyester, 31% New Wool, 26% Polyacrylic, 4% Cotton, 3% Nylon, 2% Linen |
| Martindale | 45.000 |
| Flammability | BS 5852 crib 5 w. treatment, NF D 60 013 w. treatment, SN 198 898 5.3 w. treatment, UNI 9175 1IM w. treatment, US Cal. Bull. 117-2013, EN 1021-1/2, AS/NZS 3837 class 2, BS 5852 part 1 w. treatment |
| Environment | Greenguard Gold, HPD, EPD |

SAVANNA BY KVADRAT



SAVANNA 0122



SAVANNA 0152



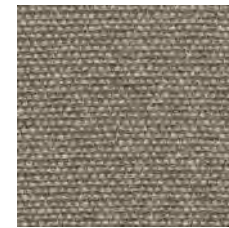
SAVANNA 0192



SAVANNA 0202



SAVANNA 0222



SAVANNA 0242



SAVANNA 0262



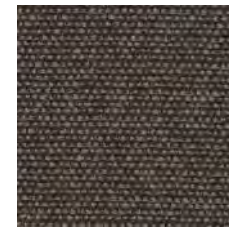
SAVANNA 0292



SAVANNA 0442



SAVANNA 0622



SAVANNA 0672



SAVANNA 0952



ZERO

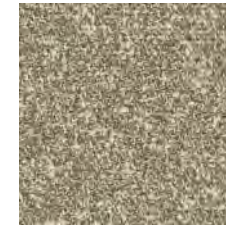
The influence of Parisian couture clothing can be seen in this elegant and irregular bouclé upholstery textile. The pearl effect yarn is used in both warp and weft giving a luxurious handle and a sophisticated appearance. The sixteen colourways range from tonal through to contrasting 'salt and pepper' combinations.

| | |
|---------------------|--|
| Supplier | Sahco |
| Composition | 65% Cotton, 20% Polyacrylic, 15% Polyester |
| Martindale | 70.000 |
| Flammability | BS 5852 crib 5 w. treatment , EN 1021-1, US Cal. 117-2013 w. Cal. 117 compliant interliner, BS 5852 part 1 w. treatment |
| Environment | Greenguard Gold, HPD |

ZERO BY SAHCO



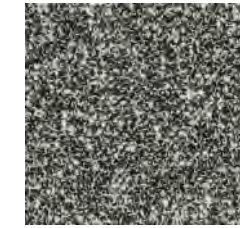
ZERO 0001



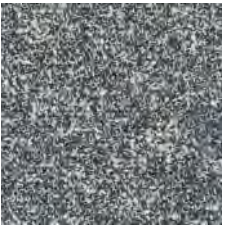
ZERO 0002



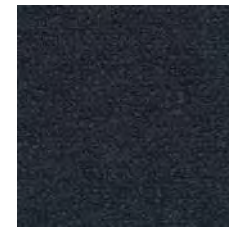
ZERO 0003



ZERO 0004



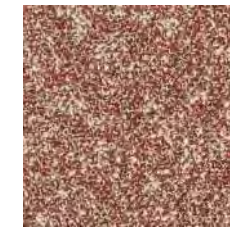
ZERO 0005



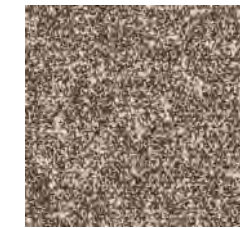
ZERO 0006



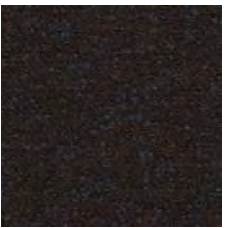
ZERO 0007



ZERO 0008



ZERO 0009



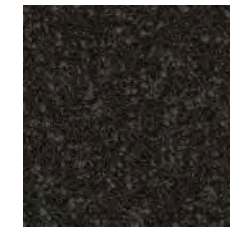
ZERO 0010



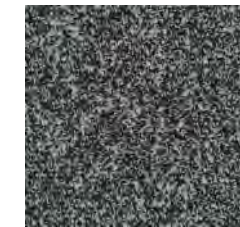
ZERO 0011



ZERO 0012



ZERO 0013



ZERO 0014



ZERO 0015

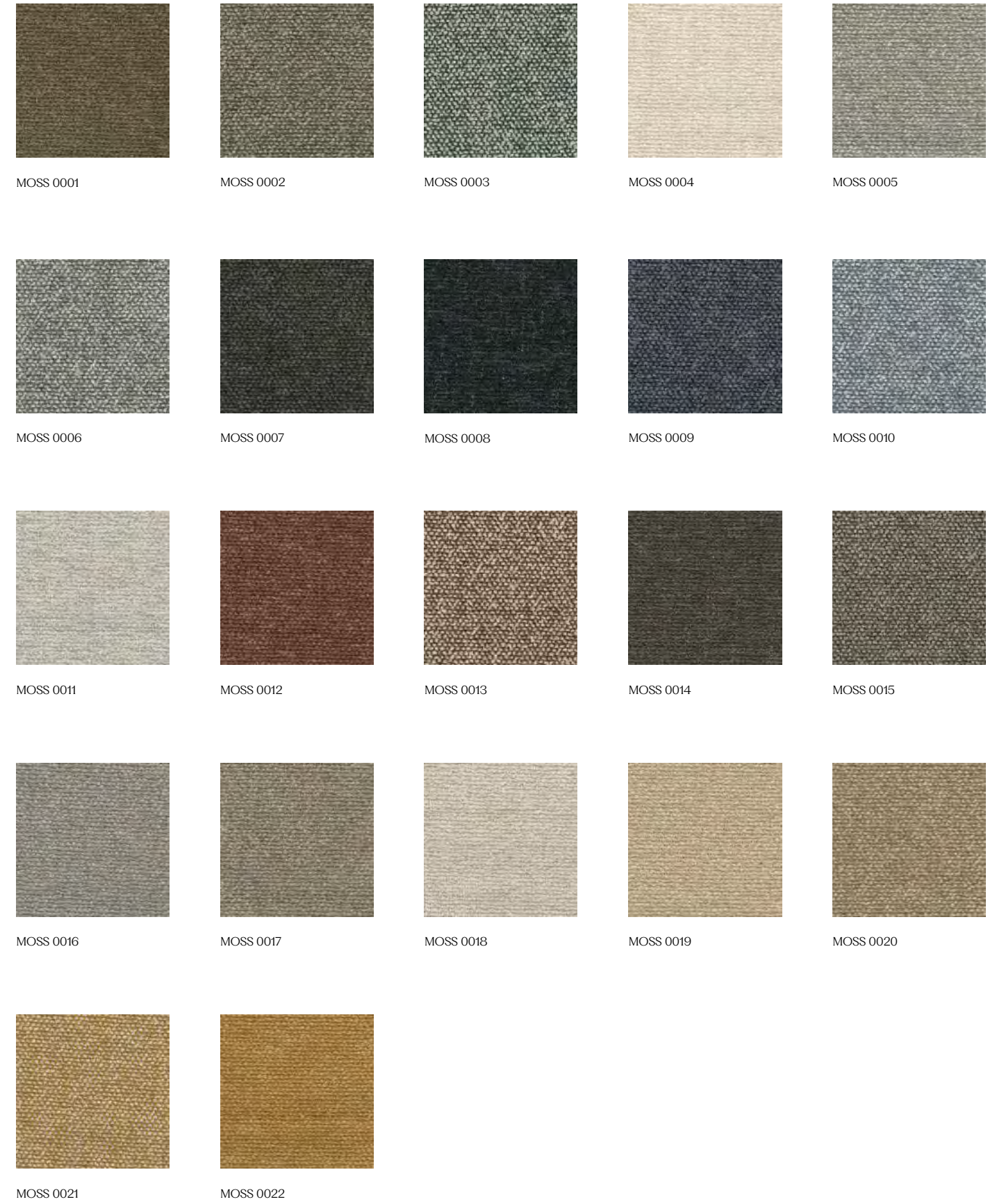


MOSS

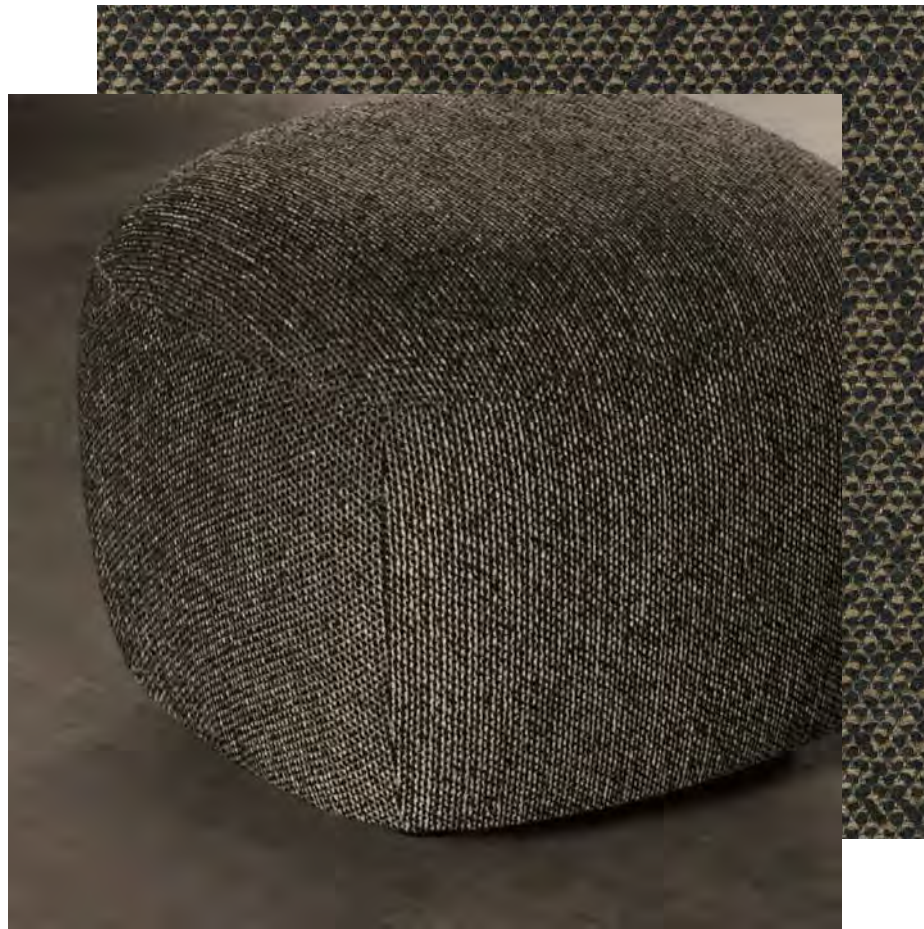
The influence of Parisian couture clothing can be seen in this elegant and irregular bouclé upholstery textile. The pearl effect yarn is used in both warp and weft giving a luxurious handle and a sophisticated appearance. The sixteen colourways range from tonal through to contrasting 'salt and pepper' combinations.

| | |
|---------------------|---|
| Supplier | Sahco |
| Composition | 52% Cotton, 22% Viscose, 14% Polyacrylic, 6% Linen, 3% Polyester, 3% Nylon |
| Martindale | 50.000 |
| Flammability | BS 5852 crib 5 w. treatment, BS 5852 part 1, EN 1021-1/2, US Cal. 117-2013 with Cal. 117 compliant interliner, IMO FTP Code 2010 Part 8 |
| Environment | EPD |

MOSS BY SAHCO



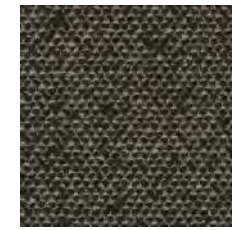
NORR11



SAFIRE

Safire's coarse surface structure gives a subtle handwoven appearance that is both unique and dynamic, adding a special and unique dimension to this upholstery fabric. The thick boucle and chenille yarns contribute to its wooly handle and soft appeal but also gives a vibrant two-tone effect. The colour palette includes both quiet natural shades and strong, bold combinations.

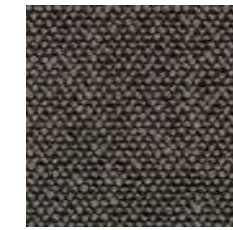
| | |
|---------------------|---|
| Supplier | Sahco |
| Composition | 43% Viscose, 17% Polyacrylic, 15% New Wool, 9% Cotton, 8% Linen, 8% Polyester |
| Martindale | 44.000 |
| Flammability | BS 5852 crib 5 w. treatment, BS 5852 part 1, EN 1021-1/2, US Cal. Bull. 117-2013, IMO FTP Code 2010 Part 8 |
| Environment | Greenguard Gold, HPD, EPD |



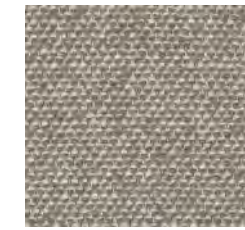
SAFIRE 0001



SAFIRE 0002



SAFIRE 0003



SAFIRE 0004



SAFIRE 0005



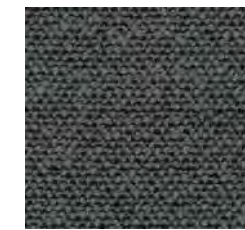
SAFIRE 0006



SAFIRE 0007



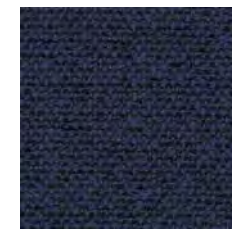
SAFIRE 0008



SAFIRE 0009



SAFIRE 0010



SAFIRE 0011



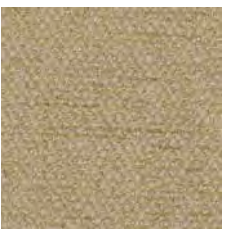
SAFIRE 0012



SAFIRE 0013



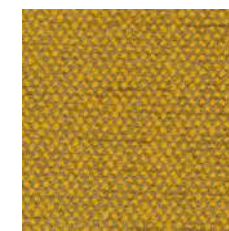
SAFIRE 0014



SAFIRE 0015



SAFIRE 0016



SAFIRE 0017



BARU

An ultra-soft woven woollen bouclé, Baru feels like shorn fleece and has a comforting volume created by the elasticity of the wool fibre and the finishing processes. Yarn dyed with one colour in warp and another in weft, it has the benefits of a woollen textile but a softer feel. The texture of the bouclé coupled with a slight shine from the acrylic blend creates a playful effect as the colour catches the light.

| | |
|---------------------|--|
| Supplier | Sahco |
| Composition | 87% New Wool, 10% Polyester, 3% Polyamide |
| Martindale | 65.000 |
| Flammability | BS 5852 part 1, US Cal. Bull. 117-2013, EN 1021-1/2, BS 5852 crib 5 w. treatment, IMO FTP Code 2010 Part 8 |
| Environment | Greenguard Gold, HPD, EPD |



BARU 0120



BARU 0150



BARU 0200



BARU 0330



BARU 0390



BARU 0410



BARU 0450



BARU 0570



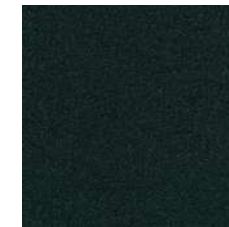
BARU 0740



BARU 0780



BARU 0950



BARU 0980



SAVANE

OUTDOOR FABRIC BY SUNBRELLA



SAVANE COCONUT



SAVANE WHISPER

SAVANE

Sunbrella Savane is a jacquard outdoor upholstery fabric made from solution dyed Sunbrella acrylic. Savane is treated to hold up to salt water, chlorine, and weather-related chemicals. The fabric will also resist water, stains, and fading.

| | |
|---------------------|---|
| Supplier | Sunbrella |
| Composition | 100% Sunbrella® Acrylic |
| Martindale | - |
| Flammability | California Technical Bulletin 117-203 Section 1, NFPA 260 Classe I, NF EN 1021-1 |
| Environment | STANDARD 100 by OEKO-TEX®, Greenguard Gold |

NORR11

OUR LEATHER CURATION



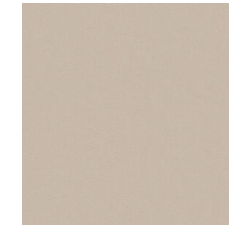
OUR LEATHER CURATION

For centuries, leather has symbolized craftsmanship, elegance, and durability, and due to its exceptional qualities, it has remained a timeless choice. We use leather from the renowned Sørensen Leather and offer three types: Aniline, Semi-Aniline, and Protected leather. Our thoughtfully curated selection from seven distinct collections, each unique in expression and treatment, is available in eighteen muted tones that blend harmoniously with other textures and materials ensuring a graceful and timeless expression.

NORR11



SPECTRUM MINERAL
30160



TERRA LIME
20365



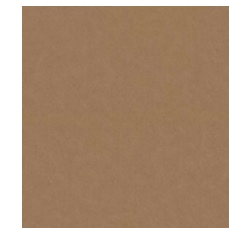
DUNES CAMEL
21004



DUNES COGNAC
21000



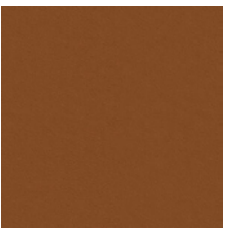
FLUX LIGHT BROWN
40305



DUNES ECRU
21008



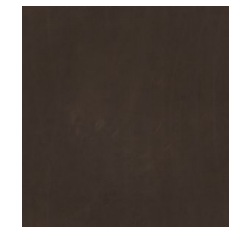
NUANCE WALNUT
40790



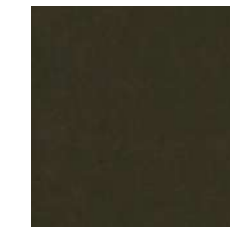
TERRA SOIL
20360



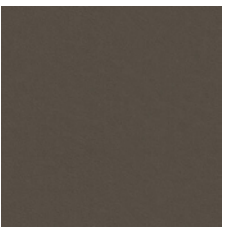
DUNES ALMOND
21009



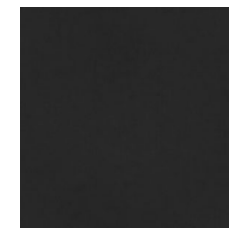
DUNES DARK BROWN
21001



ENVY OLIVE
20324



TERRA CLAY
20370



DUNES ANTHRAZITE
21003



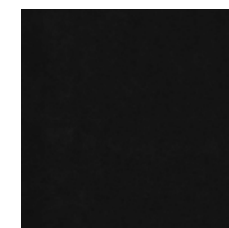
FLUX ANTHRAZITE
40302



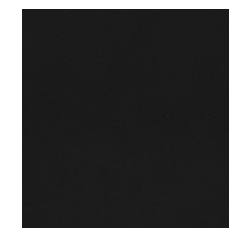
DUNES STONE
21010



NUANCE BURNED GREY
40783



ENVY BLACK
20321



ULTRA BLACK
41599



ULTRA

One of the most versatile leathers around, Ultra is everything you would want in an “everyday” type of leather. Buffed and embossed and truly nice to touch, the surface of Ultra boasts a uniform grain pattern spanning over the entire hide. Ultra has some additional amazing attributes. Thanks to its extremely strong protective finish, it’s very user-friendly and easy to maintain.

| | |
|---------------------|--|
| Supplier | Sørensen Leather |
| Composition | 100% Protected Leather |
| Martindale | - |
| Flammability | BS EN 1021 1&2, BS5852 0&1, CAL 117, FAR §23.853 (AUS) |
| Environment | PCP, AZO dyes, Chrome VI, REACH |

Please note that the colours not included in NORR11 selection will be quoted individually.



ULTRA ALTWEISS
41576



ULTRA ANTHRAXITE
41580



ULTRA BLACK BROWN
41590



ULTRA BRANDY
41574



ULTRA BRICK
41579



ULTRA BROWN
41588



ULTRA CAMEL
41571



ULTRA CHOCOLATE
41589



ULTRA COGNAC
41598



ULTRA EARTH
41584



ULTRA EGGSHELL
41581



ULTRA GREY
41585



ULTRA LAVA
41575



ULTRA LEAF
41566

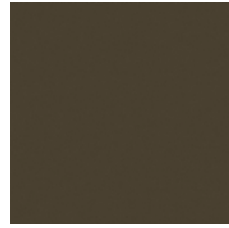


ULTRA MARBLE
41583

NORR11



ULTRA MARSH
41570



ULTRA MOSS
41569



ULTRA NAVY
41573



ULTRA OAT
41568



ULTRA POPPY
41578



ULTRA SAFARI
41586



ULTRA SAND
41582

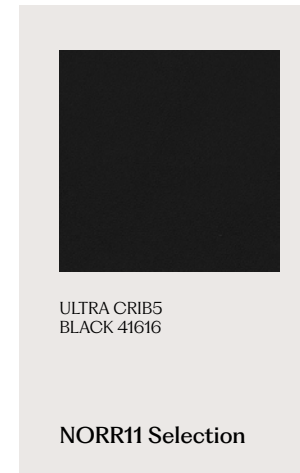
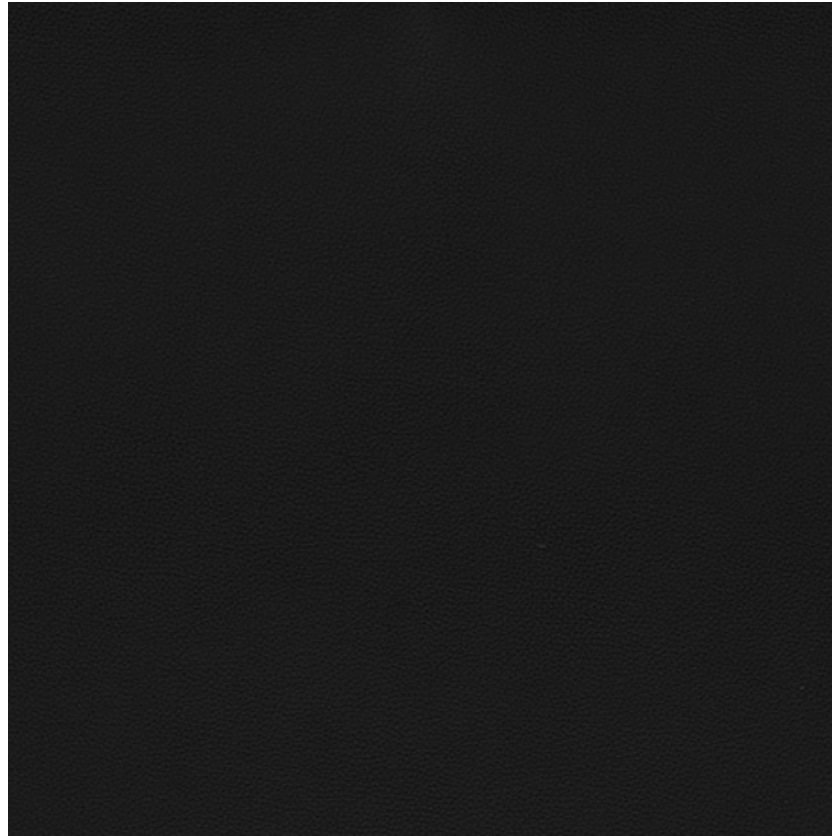


ULTRA SMOKE
41567

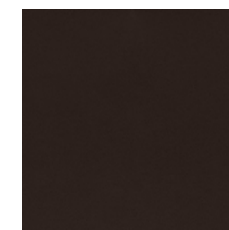


ULTRA WHITE
41594





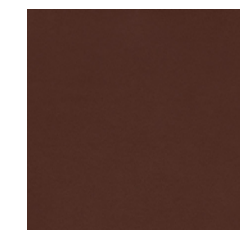
ULTRA CRIB5
ANTHRAZITE 41615



ULTRA CRIB5
CHOCOLATE 41614



ULTRA CRIB5
ALTWEISS 41610



ULTRA CRIB5
COGNAC 41613



ULTRA CRIB5
BRANDY 41612



ULTRA CRIB5
CAMEL 41611



ULTRA CRIB5
MOSS 41617

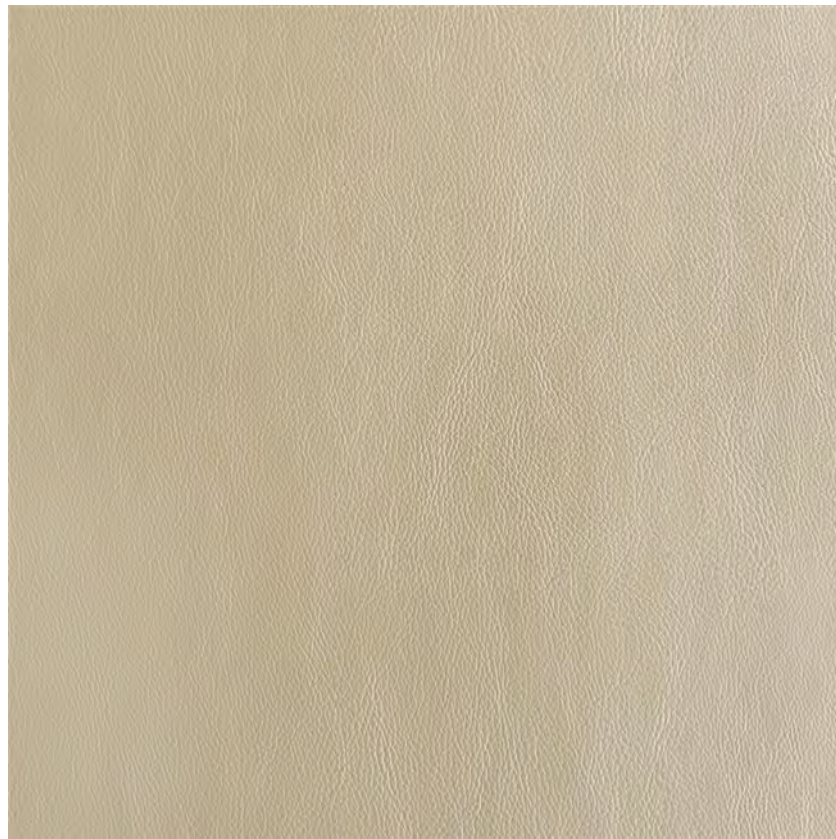
ULTRA CRIB5

Ultra Crib5 is a versatile leather, designed to meet specific and stringent flammability requirements. The surface is buffed and embossed, and really nice to touch. It's also water repellent, stain resistant and easy to maintain due to its strong protective finish.

| | |
|---------------------|--|
| Supplier | Sørensen Leather |
| Composition | 100% Protected Leather |
| Martindale | - |
| Flammability | BS EN 1021 1&2, CA TB 117-2013, BS 5852 Crib 5 |
| Environment | STANDARD 100 by OEKO-TEX®, REACH, ANSI/BIFMA |

Please note that the colours not included in NORR11 selection will be quoted individually.

NORR11



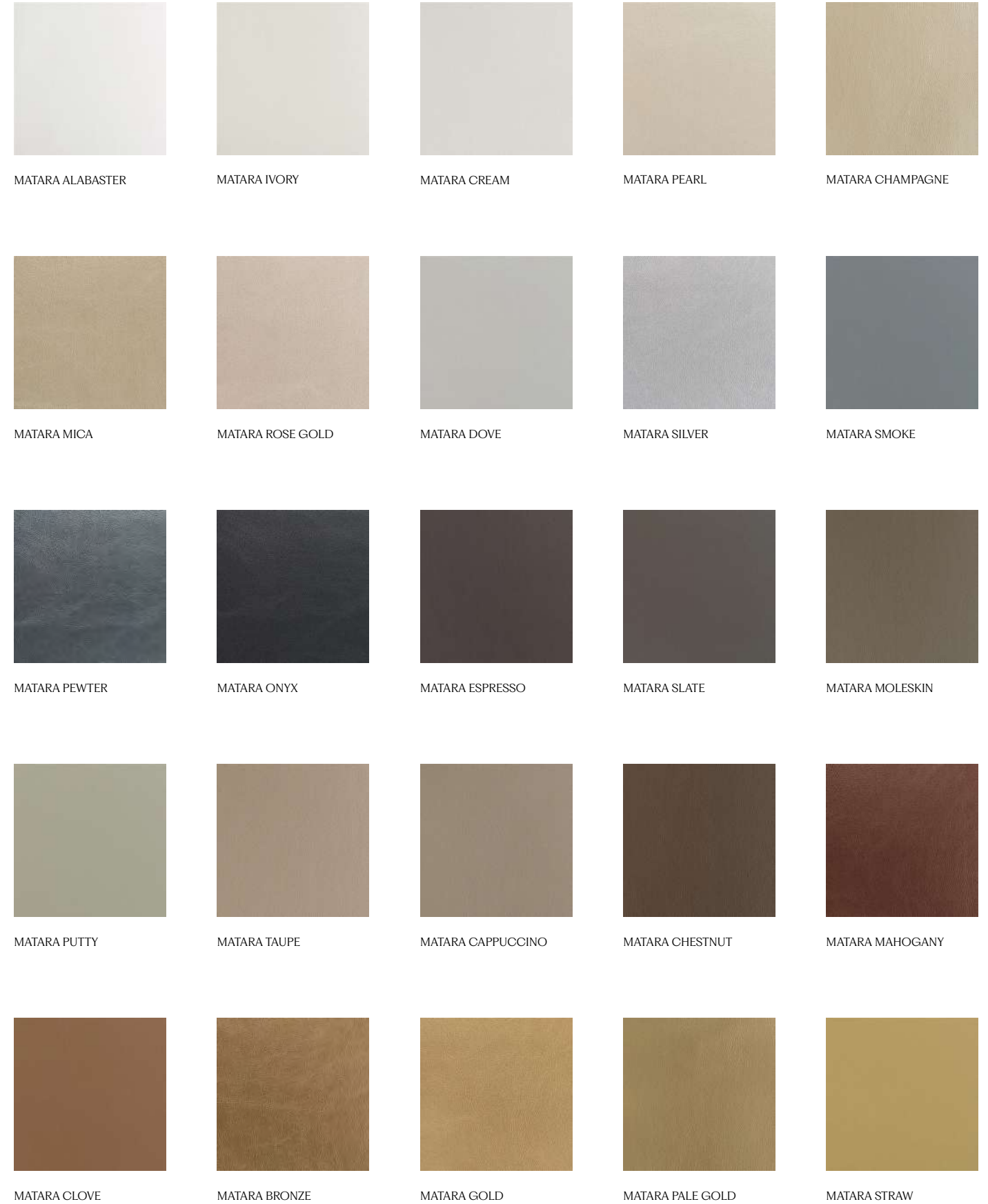
MATARA (FAUX)

A smart, sophisticated faux leather with a naturalistic grain, soft hand, subtle sheen and a suede effect backing. Incredibly hard wearing, can be treated to most FR and IMO standards. In 54 colours, is eminently suitable for both contract and domestic usage.

| | |
|---------------------|----------------------|
| Supplier | Designers Guild |
| Composition | 72% Pvc 21% PI 7% Pu |
| Martindale | 100.000 |
| Flammability | BS EN 1021 1 |
| Environment | - |

NORR11

MATARA (FAUX) BY DESIGNERS GUILD





MATARA TURMERIC



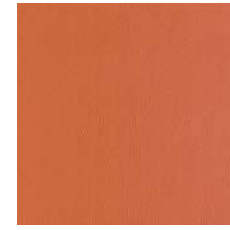
MATARA SPICE



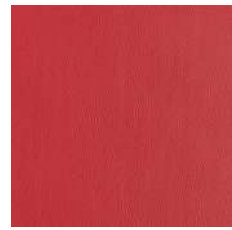
MATARA COPPER



MATARA SAFFRON



MATARA SIENNA



MATARA SCARLET



MATARA CRIMSON



MATARA FUCHSIA



MATARA BLOSSOM



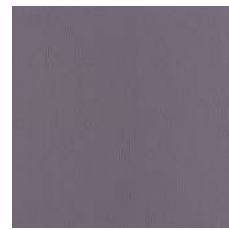
MATARA BERRY



MATARA RUSSET



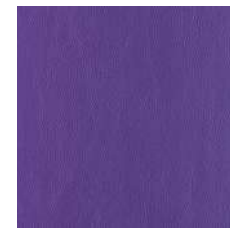
MATARA CLARET



MATARA THISTLE



MATARA AUBERGINE



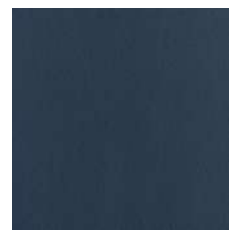
MATARA AMETHYST



MATARA SAPPHIRE



MATARA COBALT



MATARA NAVY



MATARA PETROL



MATARA AZURE



MATARA VIRIDIAN



MATARA CELADON



MATARA DUCK EGG



MATARA PERIDOT



MATARA APPLE



MATARA LEAF



MATARA FOREST



MATARA FERN



MATARA OLIVE

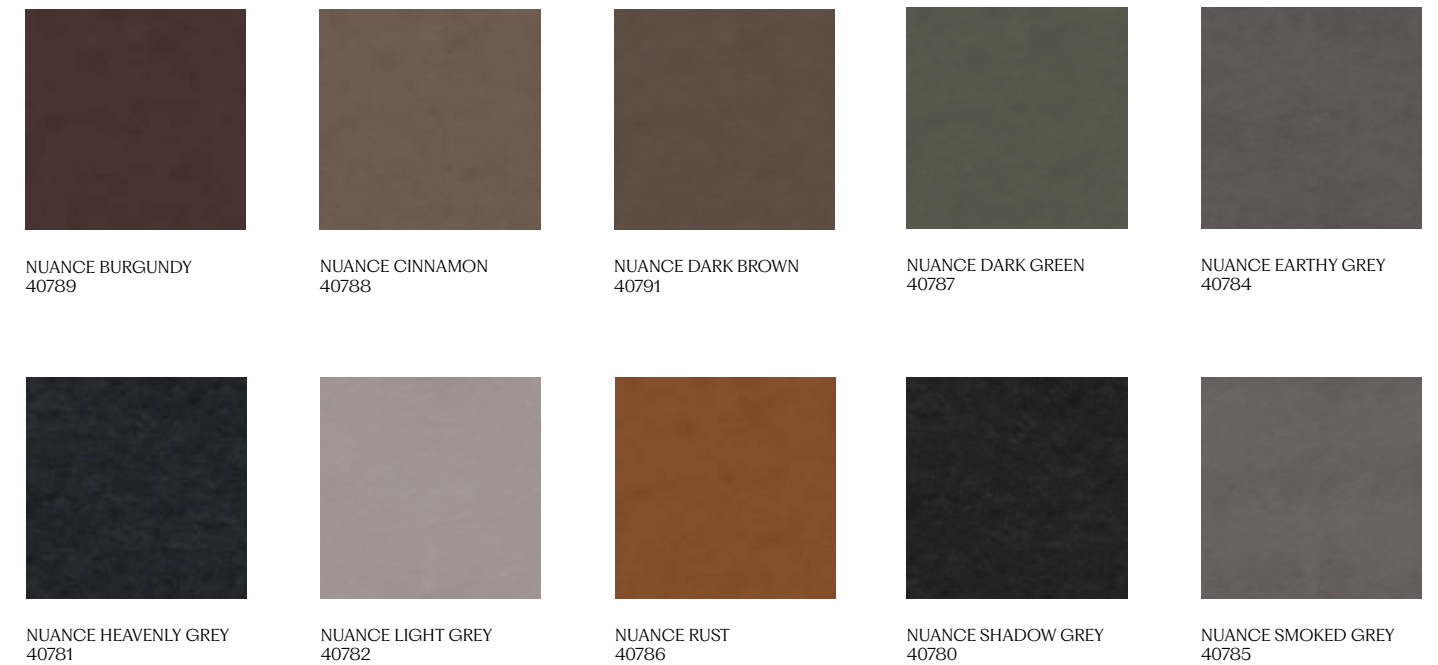


NUANCE

Nuance has a remarkable depth and dimension that exudes authenticity, with the added advantage that it's designed to be durable. It's a new type of protected leather developed in collaboration with Space Copenhagen, where the nuances are seen in the natural texture as well as the tones. The natural patterns and imperfections are visible, reflecting the innate beauty of each hide.

| | |
|---------------------|-----------------------------------|
| Supplier | Sørensen Leather |
| Composition | 100% Protected Leather |
| Martindale | - |
| Flammability | BS EN 1021-1 and 2, TB 117 - 2013 |
| Environment | PCP, AZO dyes, Chrome VI, REACH |

Please note that the colours not included in NORR11 selection will be quoted individually.



NORR11



FLUX

Flux is a type of protected leather that resembles nubuck, with a matt look akin to neoprene. It's an innovative leather developed in collaboration with architect and designer David Thulstrup, featuring a velvety-soft surface with a muted effect that's ultra modern. In addition to all the advantages of protection, involving a very fine surface coating that's unperceivable to the eye, which renders Flux resistant to scuffing and fading.

| | |
|---------------------|---|
| Supplier | Sørensen Leather |
| Composition | 100% Protected Leather |
| Martindale | - |
| Flammability | BS 5852 - 1 4.1 and 5.1, BS EN 1021-1 and 2, TB 117-2013 |
| Environment | LEATHER STANDARD by OEKO-TEX®, PCP, AZO dyes, Chrome VI, REACH |

Please note that the colours not included in NORR11 selection will be quoted individually.



NORR11

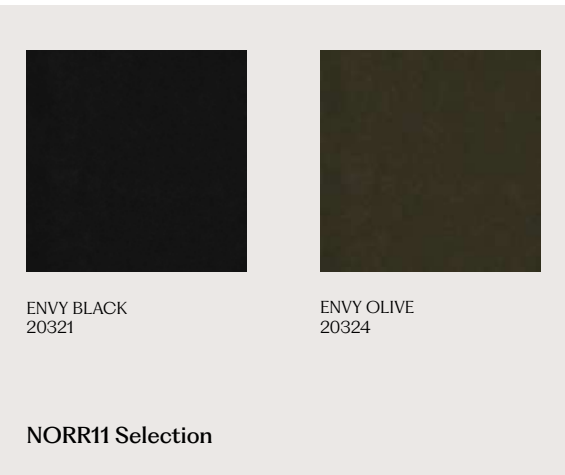


ENVY

Envy is an accessible leather with an aura of elegance. Smooth to the touch with a slight sheen to the surface, it's a captivating leather that awakens the senses. Look closer and you can see very subtle natural markings, which are minimised via a special sanding process. Add to that a light, transparent wax that helps protect the surface and the result is a lovely feel with a brilliant sense of depth.

| | |
|---------------------|---|
| Supplier | Sørensen Leather |
| Composition | 100% Aniline Leather |
| Martindale | - |
| Flammability | BS EN 1021-1 and 2, TB 117-2013 |
| Environment | LEATHER STANDARD by OEKO-TEX®, PCP, AZO dyes, Chrome VI, REACH |

Please note that the colours not included in NORR11 selection will be quoted individually.



NORR11



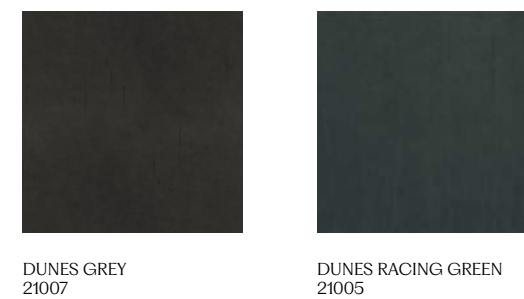
DUNES

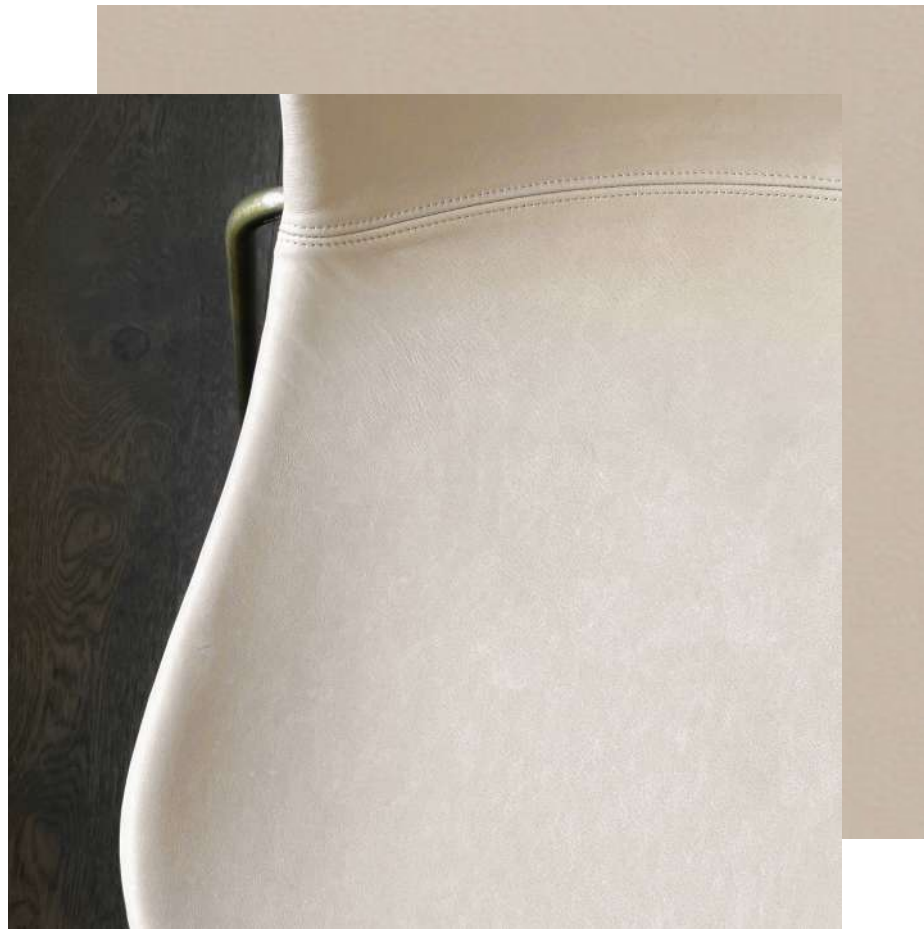
Run your fingers along the surface of Dunes and it feels as smooth as butter. A special process involving sanding, buffing and applying a special type of leather oil to the surface gives it that almost velvety touch. At the same time, Dunes boasts a matt look that's raw with a touch of understated elegance. Part of Dunes' extra appeal are the subtle, natural markings which bring a unique personality to each hide.

| | |
|---------------------|---|
| Supplier | Sørensen Leather |
| Composition | 100% Aniline Leather |
| Martindale | - |
| Flammability | BS EN 1021 1&2, BS5852 0&1, CAL 117 |
| Environment | Oeko-Tex, PCP, AZO dyes, Chrome VI, REACH |

Please note that the colours not included in NORR11 selection will be quoted individually.

NORR11





TERRA

Terra is a new type of innovative high-end leather developed in collaboration with Norm Architects, known for their thoughtful design philosophy that seeks to engage the senses and enrich the quality of life. It's an extremely soft aniline leather featuring a silky-matt surface with a subtle shine and a velvety tactile feel that evokes one's senses, offering a touch of modern sophisticated elegance.

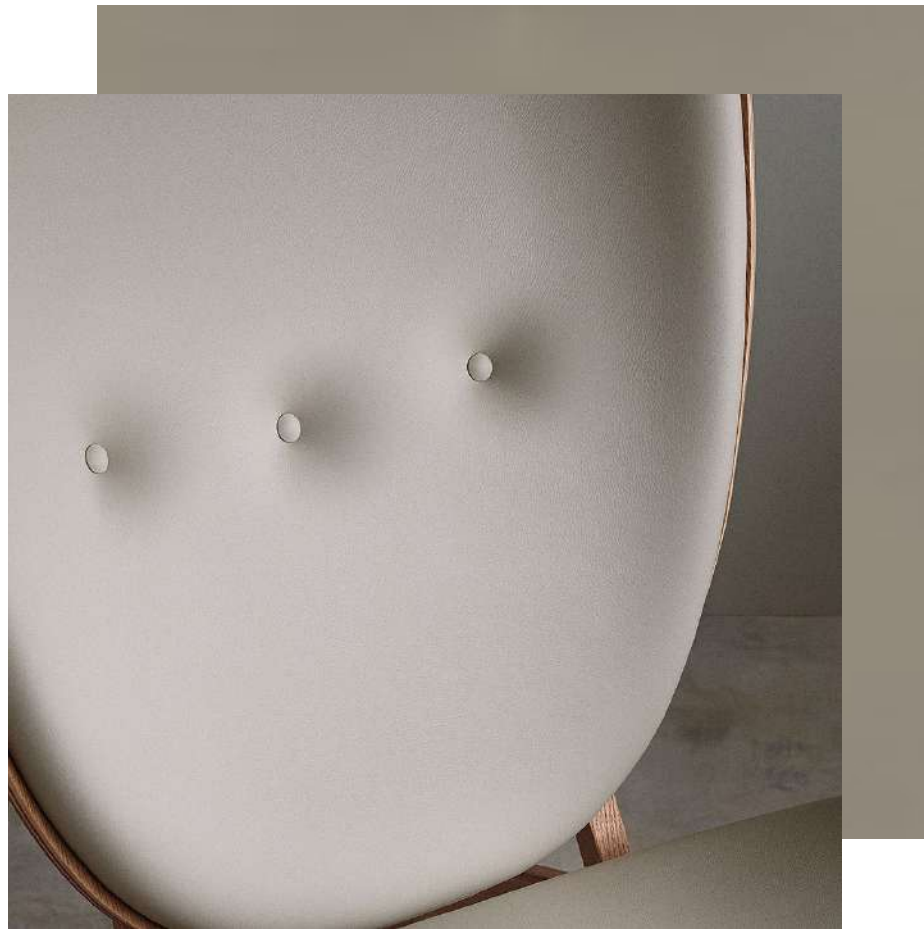
| | |
|---------------------|---------------------------------|
| Supplier | Sørensen Leather |
| Composition | 100% Aniline Leather |
| Martindale | - |
| Flammability | BS EN 1021-1 and 2, TB 117-2013 |
| Environment | PCP, AZO dyes, Chrome VI, REACH |

Please note that the colours not included in NORR11 selection will be quoted individually.

TERRA BY SØRENSEN LEATHER



NORR11

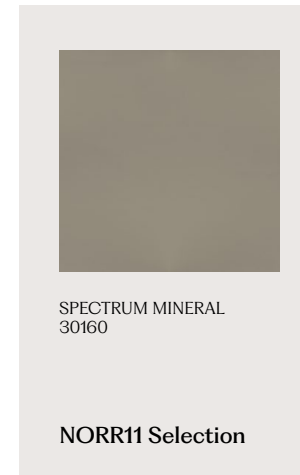


SPECTRUM

Spectrum is a soft leather with a subtle texture that looks more uniform, thanks to a light surface finish that works to protect the leather from dirt, stains and any fading resulting from exposure to light. Spectrum is ideal for designers and architects, as it can be used in a broad range of industries. From commercial spaces to business settings, to hotels and restaurants, public buildings and the healthcare sector, as well as cultural institutions and private residences.

| | |
|---------------------|-------------------------------------|
| Supplier | Sørensen Leather |
| Composition | 100% Semi-Aniline Leather |
| Martindale | - |
| Flammability | BS EN 1021 1&2, BS5852 0&1, CAL 117 |
| Environment | PCP, AZO dyes, Chrome VI, REACH |

Please note that the colours not included in NORR11 selection will be quoted individually.



SPECTRUM ALMOND
30150



SPECTRUM BARK
30148



SPECTRUM AGAVE
30098



SPECTRUM AUTUMN
30099



SPECTRUM APRICOT
30122



SPECTRUM BRANDY
30155



SPECTRUM BRICK
30199



SPECTRUM BURN
30092



SPECTRUM CAMEL
30106



SPECTRUM
BURNED ORANGE
30173



SPECTRUM CORN
30103



SPECTRUM CREAM
30101



SPECTRUM GINGER
30096



SPECTRUM COGNAC
30107



SPECTRUM EARTH
30149

NORR11



SPECTRUM EGGSHELL 30100 SPECTRUM HONEY 30102 SPECTRUM ICE 30075 SPECTRUM IVORY 30161 SPECTRUM MARBLE 30105



SPECTRUM GLACIER 30158 SPECTRUM SAND 30076 SPECTRUM NOUGAT 30095 SPECTRUM GRANITE 30156 SPECTRUM MOON 30077



SPECTRUM CLOUD 30079 SPECTRUM GREY 30131 SPECTRUM CONCRETE 30082 SPECTRUM LAVA 30132 SPECTRUM TOBACCO 30111



SPECTRUM CINNAMON 30146 SPECTRUM COFFEE 30112 SPECTRUM ANTHRAZITE 30134 SPECTRUM BLACK 30114 SPECTRUM BROWN 30087



SPECTRUM RUST 30109 SPECTRUM KIWI 30129 SPECTRUM CACTUS 30081 SPECTRUM GREEN 30167 SPECTRUM ADRIA 30137



SPECTRUM BLACKBERRY 30115 SPECTRUM CHOCOLATE 30113 SPECTRUM CORAL 30118 SPECTRUM DARK GREY 30162 SPECTRUM DARK BLUE 30085



SPECTRUM FOREST 30127 SPECTRUM HAVANA 30110 SPECTRUM MOSS 30128 SPECTRUM SPRING 30080 SPECTRUM MANGO 30120



SPECTRUM MANDARIN 30089 SPECTRUM SUNSET 30090 SPECTRUM LIGHT TAN 30152 SPECTRUM TOFFEE 30154 SPECTRUM MUSHROOM 30169



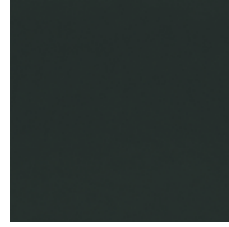
SPECTRUM MUSTARD 30104 SPECTRUM SAFRAN 30170 SPECTRUM TERRA 30094 SPECTRUM MOCCA 30153 SPECTRUM LAVENDER 30088



SPECTRUM MUD 30086 SPECTRUM RUBY 30116 SPECTRUM MIX 30147 SPECTRUM TAN 30108 SPECTRUM WINE RED 30117



SPECTRUM SANDSTONE
30133



SPECTRUM BOTTLE GREEN
30083



SPECTRUM LEAF
30168



SPECTRUM MARINE
30139



SPECTRUM OCEAN
30138



SPECTRUM PAPAYA
30121



SPECTRUM OYSTER
30157



SPECTRUM PARCHMENT
30151



SPECTRUM RED BROWN
30172



SPECTRUM PARK
30097



SPECTRUM PETROLEUM
30126



SPECTRUM ROYAL
30166



SPECTRUM SAFARI
30145



SPECTRUM SPACE
30078



SPECTRUM SILVER GREY
30130



SPECTRUM STROM
30084



SPECTRUM SUMMER
30091



SPECTRUM TERRACOTTA
30171



SPECTRUM WALNUT
30093



SPECTRUM WHITE
30140



NORR11

SHEEPSKIN

BY SKANDILOCK



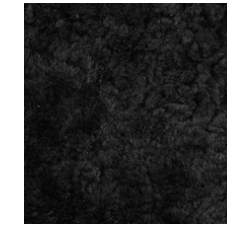
02 OFF WHITE



09 MOONLIGHT



08 HONEY



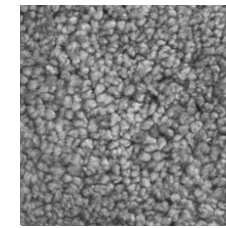
01 BLACK



04 ANTHRACITE



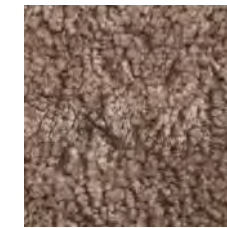
14 CHARCOAL



22 SCANDINAVIAN GREY



15 ESPRESSO



07 SAHARA

SHEEPSKIN

Skandilock Curly 17mm is developed for furniture upholstery but can also be used for different furnishing assignments. The wool has a curly texture and is high in density which makes it durable and soft.

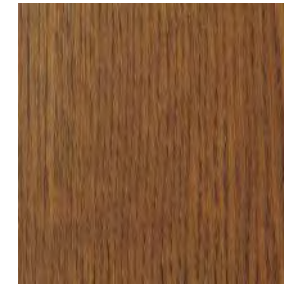
| | |
|---------------------|--|
| Supplier | Skandilock |
| Composition | 100% Sheepskin |
| Martindale | - |
| Flammability | EN1021-1&2, CAL 117, FAR §23.853 (AUS) |
| Environment | - |

NORR11

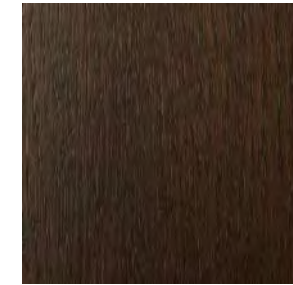
WOOD



OAK NATURAL



OAK LIGHT SMOKED



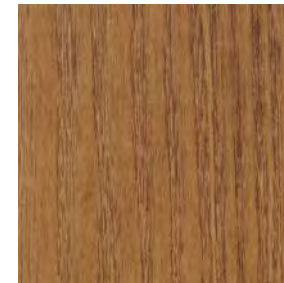
OAK DARK SMOKED



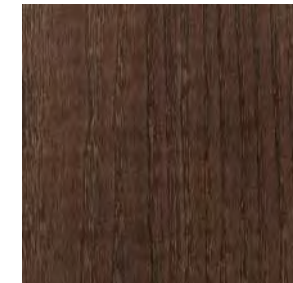
OAK BLACK



ASH NATURAL



ASH LIGHT SMOKED



ASH DARK SMOKED



ASH BLACK

WOOD

Wood is a natural material and may vary from batch to batch. Variations in wood structure and colour are part of the timber characteristics of the wood and applying lacquer will further enhance these characteristics.

All our wood is FSC certified, sourced within the EU and coated with a water based lacquer.

Customised stain colours can be requested and must be approved and priced prior to production.

NORR11

METAL



POWDER COATED STEEL (DUKE)
Antique White (PANTONE 12-0304 TPG)



POWDER COATED STEEL (DUKE)
Stone (PANTONE 16-0806 TPG)



POWDER COATED STEEL (DUKE)
Earth Black (PANTONE 19-0405 TPG)



POWDER COATED STEEL (DUKE)
Bronze (PANTONE 19-0812 TPG)



POWDER COATED STEEL (DUKE)
Lacquered
Obsidian Black (PANTONE 19-4203 TPG)



POWDER COATED STEEL (DUKE)
Lacquered
Maroon (PANTONE 19-1627 TPG)



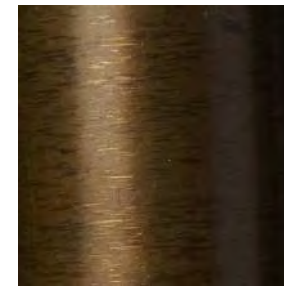
POWDER COATED STEEL (DUKE)
Lacquered
Mineral (PANTONE 12-5201 TPG)



STAINLESS STEEL (MAN)



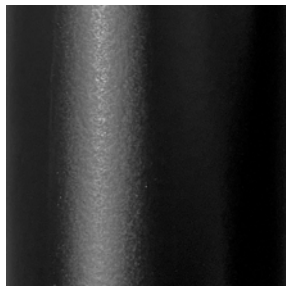
BLACK STEEL (LANGUE)



BRASS (LANGUE / NEW WAVE)



RAW CAST ALUMINIUM (GHOST)



POWDER COATED ALUMINIUM (JFK)

METAL

High quality metals of steel and aluminium are used in some of our lighting and tables collections. The powdercoated surfaces are spray painted in a powder coating facility to achieve a strong and resistant surface with a smooth and even color. The plated metal colors are brushed after the plating process to achieve a mat metallic finish.

NORR11



POLYPROPYLENE



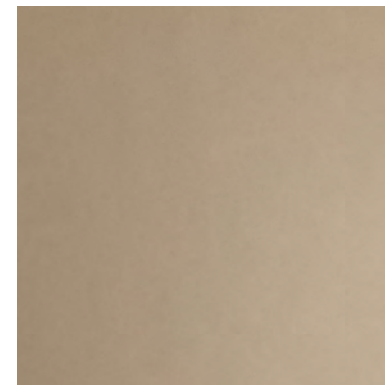
ANTHRACITE BLACK
PANTONE 19-0303 TPX



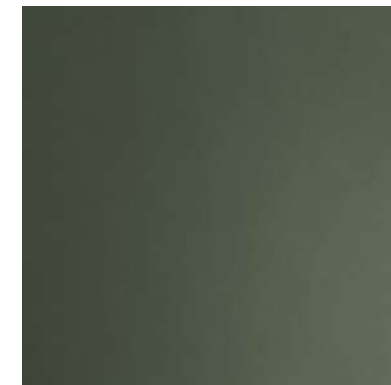
FLINT GREY
PANTONE 16-5803 TPX



BURGUNDY
RAL 3007



ECRU
RAL1019



ARMY GREEN
RAL 6006

POLYPROPYLENE

The seat shells for the Langue series are molded from a highly durable glass fiber reinforced polypropylene.

Customised colours are available with minimum order quantity of 300 seats and are subject to special pricing.

NORR11



STONE & CONCRETE

Finest natural stones and fiber concrete are used in some of our lighting and tables collections.

Our travertine and marble are handpicked according to our high standards of color and quality. The white marble is polished to achieve a fine balance between a somewhat shiny and mat surface. The grey marble remains unpolished to create an almost concrete looking surface. The surface of the travertine is polished and untreated.

Our lightweight reinforced fiber concrete is made from a mixture of concrete mass with polyester fibers. Casted in a mould, each product has a unique surface texture with small marks and variations from the casting procedure.



FIBER CONCRETE (GEAR / QUARTZ)
Chalk (PANTONE 11-0601 TPG)



FIBER CONCRETE (GEAR / QUARTZ)
Earth (PANTONE 19-1101 TPG)



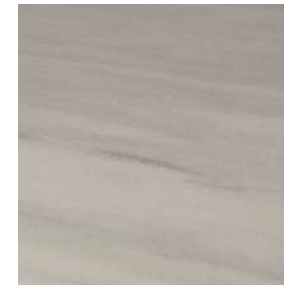
FIBER CONCRETE (QUARTZ)
Mineral (PANTONE 13-6105 TPG)



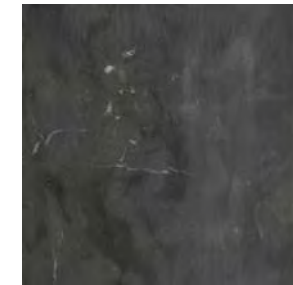
FIBER CONCRETE (QUARTZ)
Maroon (PANTONE 19-2118 TPG)



TRAVERTINE (CUBISM / SOHO)



WHITE MARBLE (MAIDEN)



UNTREATED GREY MARBLE (LINE)



WHITE MARBLE (LINE)



