

# ZENITH Lockers



**Features:**

Zenith lockers offer secure, space-efficient, and customisable storage for dynamic workplaces. Built from premium materials and available in various finishes, our lockers can integrate seamlessly with Smartalock software for smart locking, user management, and flexibility.

**Note:**

- Right hand door hinge is standard
- Custom lockers available on request

**Options:**

- 11 standard types
- Smartalock software
- Locker numbering
- Ventilation
- End panels & bulkhead

**Design:** ZENITH DESIGN STUDIO

**Warranty:** 7 years

**Finishes:**

**Locker Doors:** Laminex or Polytec Range

**Locker Carcass & Internal Shelving:** Black board, white board, or to match doors finish

**Locker Plinth, End Panels & Bulkhead:** To match doors finish

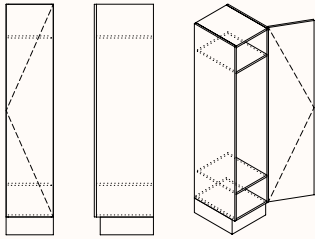
Refer to Zenith Lockers Finishes specification for options

**Hanging Rail:** Chrome

**Folding Ironing Board:** White powder coat with grey board cover

**Vent Grill:** Silver

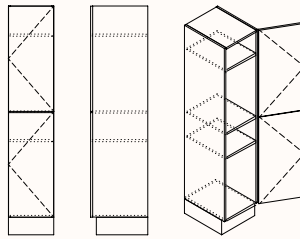
## Dimensions



### Type 1: 1x locker with 2x fixed shelves

OW 400-450mm  
OD 500mm  
OH 1910-1930mm

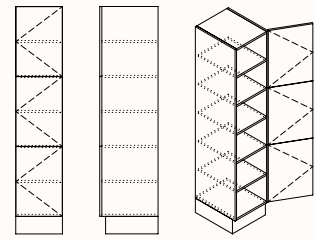
Door Height: 1780mm  
Plinth Height: 130-150mm



### Type 2: 2x lockers with 1x adjustable shelf per locker

OW 400-450mm  
OD 500mm  
OH 1910-1930mm

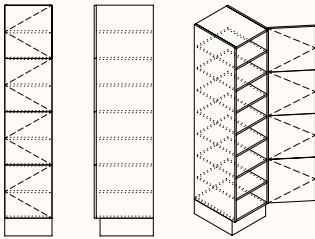
Door Height: 890mm(2x)  
Plinth Height: 130-150mm



### Type 3: 3x lockers with 1x adjustable shelf per locker

OW 400-450mm  
OD 500mm  
OH 1910-1930mm

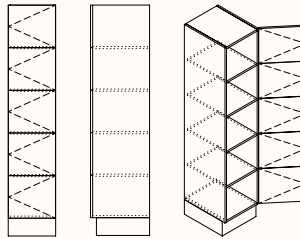
Door Height: 593mm(3x)  
Plinth Height: 130-150mm



### Type 4: 4x lockers with 1x adjustable shelf per locker

OW 400-450mm  
OD 500mm  
OH 1910-1930mm

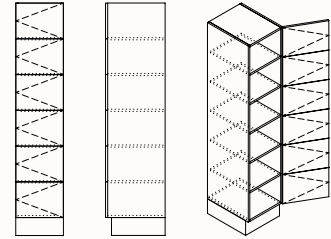
Door Height: 445mm(4x)  
Plinth Height: 130-150mm



### Type 5: 5x lockers with no shelves

OW 400-450mm  
OD 500mm  
OH 1910-1930mm

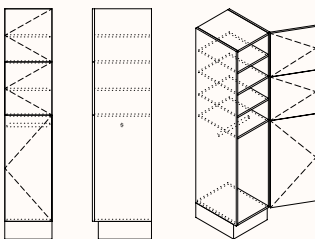
Door Height: 356mm(5x)  
Plinth Height: 130-150mm



### Type 6: 6x lockers with no shelves

OW 400-450mm  
OD 500mm  
OH 1910-1930mm

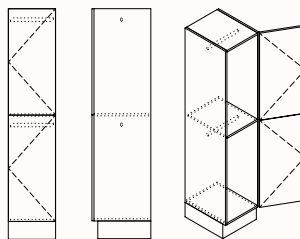
Door Height: 297mm(6x)  
Plinth Height: 130-150mm



### Type 7: 2x small lockers with adjustable shelf and 1x large locker with hanging rail

OW 400-450mm  
OD 500mm  
OH 1910-1930mm

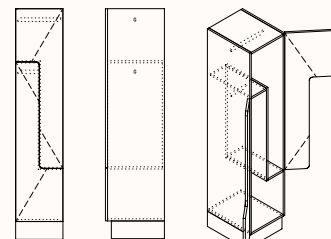
Door Height: 445mm(2x) & 890mm(1x)  
Plinth Height: 130-150mm



### Type 8: 2x lockers with 1x hanging rail per locker

OW 400-450mm  
OD 500mm  
OH 1910-1930mm

Door Height: 890mm(2x)  
Plinth Height: 130-150mm

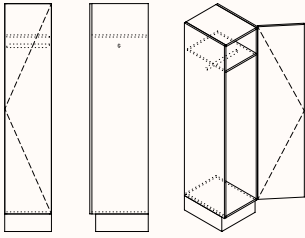


### Type 9: 2x lockers with wave doors with 1x hanging rail per locker

OW 400-450mm  
OD 500mm  
OH 1910-1930mm

Door Height: 1335mm(2x)  
Plinth Height: 130-150mm

## Dimensions



### **Type 10: 1x locker with 1x hanging rail and 1x fixed shelf**

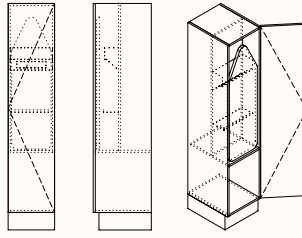
OW 400-450mm

OD 500mm

OH 1910-1930mm

Door Height: 1780mm

Plinth Height: 130-150mm



### **Type 11: 1x locker with 1x fixed shelf and 1x folding ironing board**

OW 500mm

OD 500mm

OH 2030-2050mm

Door Height: 1900mm

Plinth Height: 130-150mm