

BOLETE Conference Table



Features:

Versatile by design, sustainable by nature. This collection of dining, meeting, and conference tables balances character with everyday functionality. The Bolete Conference Table adapts effortlessly through a range of top shapes and material finishes, all paired with a distinctive grooved base crafted from Pure ECO, a recycled and recyclable thermo-polymer.

Designed for flexibility, it offers extensive customization to suit any environment. Integrated power and multimedia options, along with a discreet access panel, ensure seamless connectivity and easy maintenance.

Design: ANDREU WORLD

Warranty: 10 years

Materials:

Base: Thermo-polymer

Table Top: Oak, Lacquered, Compacto, Stone, Marble

Finishes:

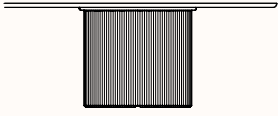
Base:

Thermo-polymer finished in Andreu world Select powder coats
Please refer to Andreu world select finishes specification

Table Top:

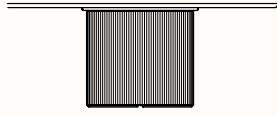
Finished in Oak, Lacquered, Compacto, Stone or Marble
Please refer to Andreu world select finishes specification

Dimensions



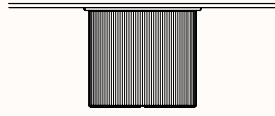
BOLETE Conference ME21000

DIA 1400mm
OH 738mm



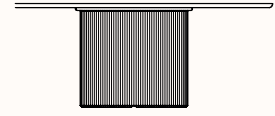
BOLETE Conference ME21001

DIA 1500mm
OH 738mm



BOLETE Conference ME21002

DIA 1600mm
OH 738mm



BOLETE Conference ME21003

DIA 1800mm
OH 738mm



BOLETE Conference ME21004

OW 2200mm
OD 1200mm
OH 738mm



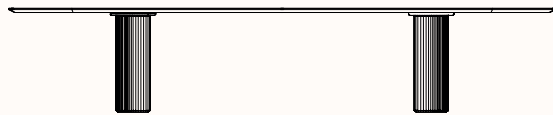
BOLETE Conference ME21005

OW 2400mm
OD 1200mm
OH 738mm



BOLETE Conference ME21006

OW 2600mm
OD 1500mm
OH 738mm



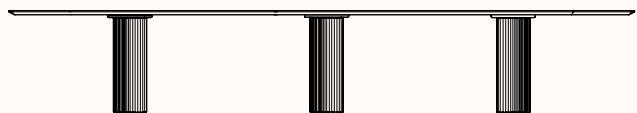
BOLETE Conference ME21007

OW 2800mm
OD 1500mm
OH 738mm



BOLETE Conference ME21008

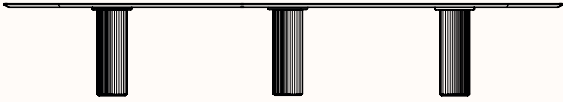
OW 3000mm
OD 1500mm
OH 738mm



BOLETE Conference ME21009

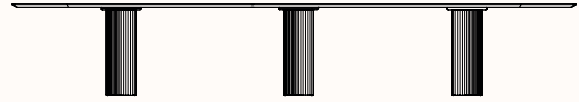
OW 3500mm
OD 1500mm
OH 738mm

Dimensions



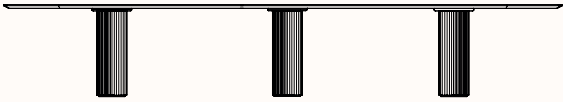
BOLETE Conference ME21010

OW 4000mm
OD 1500mm
OH 738mm



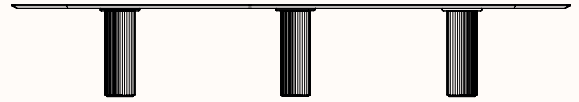
BOLETE Conference ME21011

OW 4500mm
OD 1500mm
OH 738mm



BOLETE Conference ME21012

OW 5000mm
OD 1500mm
OH 738mm



BOLETE Conference ME21013

OW 5500mm
OD 1500mm
OH 738mm