

# House Screen Specification

## Category A

Screen / Panel - Zenith Woven	<a href="#">3</a>
Screen / Panel - Camira Artisan	<a href="#">4</a>
Screen / Panel - Camira Bond	<a href="#">5</a>
Screen / Panel - Kvadrat Relate Screen	<a href="#">6</a>
Screen / Panel - Camira UK Cara	<a href="#">7</a>
Screen / Panel - Camira UK Carlow	<a href="#">9</a>
Screen / Panel - Cute	<a href="#">11</a>

## Category B

Screen / Panel - Kvadrat Remix Screen	<a href="#">12</a>
Panel only - Camira UK Sonus	<a href="#">13</a>

## PRODUCT

### ZENITH

Alpha Space  
Precinct Screens  
Slide on Divider  
Framed Screens  
S30/S50  
Cloud Screen  
Verse

CAT A								CAT B
Screen/Panel Zenith Woven	Screen/Panel Camira Artisan	Screen/Panel Camira Bond	Screen/Panel Kvadrat Relate Screen	Screen/Panel Camira Cara	Screen/Panel Camira Carlow	Screen/Panel Cute	Screen/Panel Kvadrat Remix Screen	Panel Only Camira Sonus
•	•	•	•	•	•	•	•	–
•	•	•	•	•	•	•	•	–
•	•	•	•	•	•	•	•	–
•	•	•	•	•	•	•	•	–
–	–	–	–	–	–	–	–	–
•	•	•	•	•	•	•	•	•

• Available – Not available

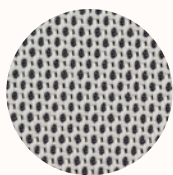
## Screen / Panel

## Category A

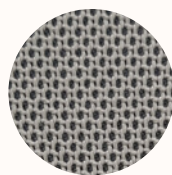
**Zenith Woven****Composition:** 100% Polyester (67% recycled content/ 33% virgin material)**Width:** 170cm**Weight:** 560g**Use:** Screen**Abrasion:** 60,000 Martindale Rubs**Light Fastness:** ISO 105 B02 Grade 5-6**Fire Test:** BS5852 Section 4/part 1

TB117 Section 1

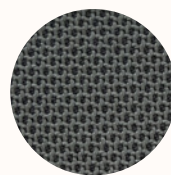
ASI530 Part 3

**Fabric Care:** Do not wash, do not bleach, do not tumble dry, iron at medium temperature (max 130°C), professional dry cleaning.

01 Cloud



02 Storm



03 Coal



04 Ink



05 Clay



# Screen / Panel

# Category A

## Camira Artisan

Heavy duty commercial screen fabric. Linen look textural fabric with 10 great useable neutrals and sharp brights.

**Application:** Commercial Screen Fabric (no upholstery)

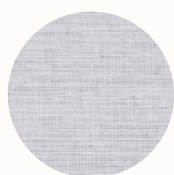
**Composition:** 100% Polyester

**Width:** 170cm

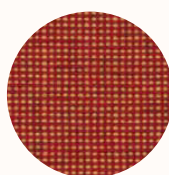
**Abrasion Resistance:** 65,000+ Martindale

**Flammability:** AS1530.3, ISO5660

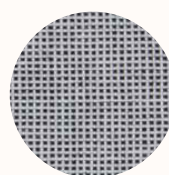
**Cleaning:** Do not remove any part for separate cleaning. Protect from direct sunlight. Vacuum regularly using low suction. Rotate reversible cushions regularly. Professional cleaning recommended.



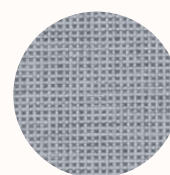
Envisage



Compose



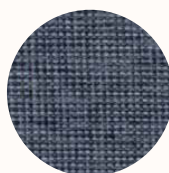
Perceive



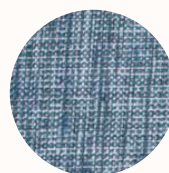
Invent



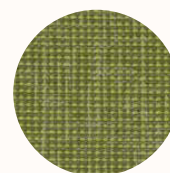
Embark



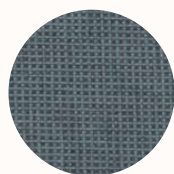
Generate



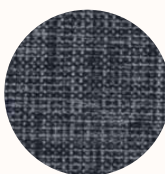
Discover



Create



Imagine



Construct



## Screen / Panel

## Category A

**Camira Bond**

Heavy duty commercial upholstery and screen fabric. Linen look textural fabric with 12 great useable neutrals and sharp brights. Bond is ideal as a Screen or Upholstery fabric.

**Application:** Upholstery / Screen

**Composition:** 100% Polyester

**Width:** 170cm

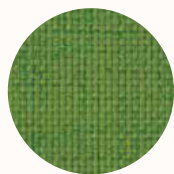
**Weight:** 211g/m<sup>2</sup>

**Abrasion Resistance:** 70,000+ Martindale

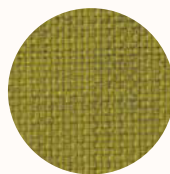
**Flammability:** AS1530 Part 3

**Qualities:** Soil Repellency treatment

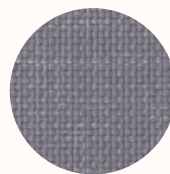
**Cleaning:** Do not remove any part for separate cleaning. Protect from direct sunlight. Vacuum regularly using low suction. Rotate reversible cushions regularly. Professional cleaning recommended.



Leaf



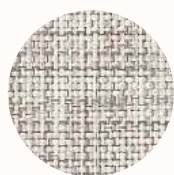
Lemoncello



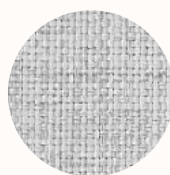
Shark



Snow



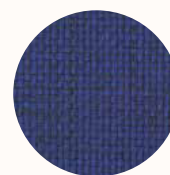
Linen



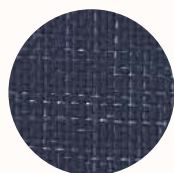
Smoke



Spring



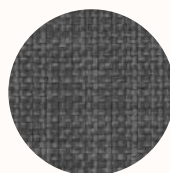
Royal



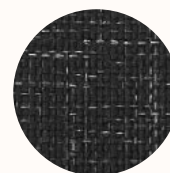
Navy



Garnet



Grey Haze



Jet



## Screen / Panel

## Category A

**Kvadrat Relate Screen**

Relate Screen is a special version of the sophisticated twill-woven upholstery textile Relate developed for wall panels, desk screens and similar applications. Patricia Urquiola has created both designs to rethink the concept of melange. While Relate Screen is identical in composition to Relate, it has a more open structure. A faux-uni, it initially appears monochromatic yet, under closer inspection, reveals a diagonal weave which fluidly blends two different coloured yarns. Relate Screen's twill-woven construction captures a delicate sense of movement and subtly references the fashion world. The textile also features a soft hand and an expression that resembles natural fibres.

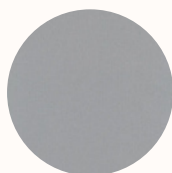
**Composition:** 100% Trevira CS

**Width:** Approx 170cm

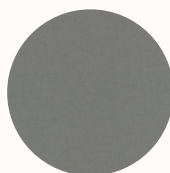
**Weight:** 470 g/lin.

**Pilling:** 3-4 (ISO 1-5)

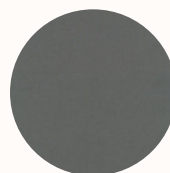
**Light Fastness:** 5-7 (ISO 1-8)



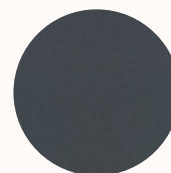
0128



0158



0168



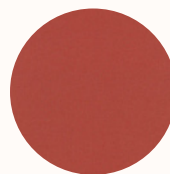
0178



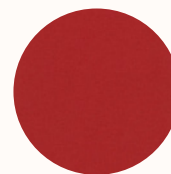
0388



0468



0568



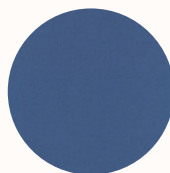
0648



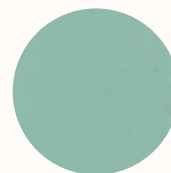
0698



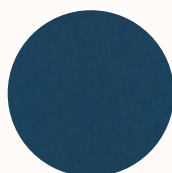
0718



0778



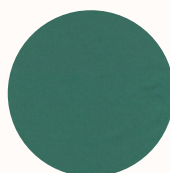
0828



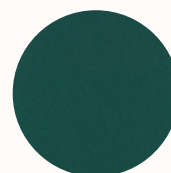
0888



0948



0968



0988



## Screen / Panel

## Category A

**Camira Cara**

Cara is a plain weave panel fabric available in a wide selection of commercial colourways. One of our most popular vertical surface fabrics, Cara is used extensively on desk screens, wallsides and on pin boards.

This fabric is largely acoustically transparent and as such is ideal to be used as a decorative facing for sound absorbing boards.

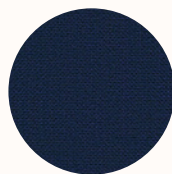
**Composition:** 100% polypropylene

**Width:** Approx 170cm

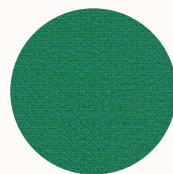
**Weight:** 220 g/m<sup>2</sup>



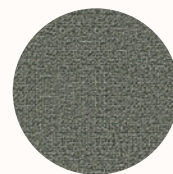
EJ004  
Glass



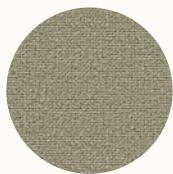
EJ011  
Walten



EJ015  
Carron



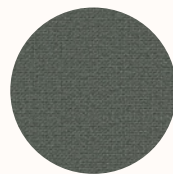
EJ016



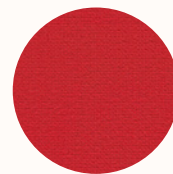
EJ033  
Spray



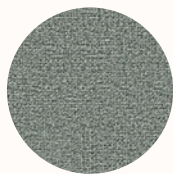
EJ038  
Tummel



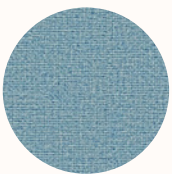
EJ048  
Merrick



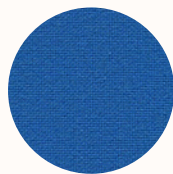
EJ076  
Pitlochry



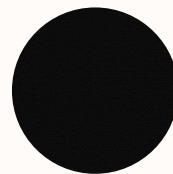
EJ104  
Lead



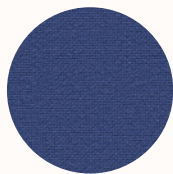
EJ105  
Dolphin



EJ125  
Galilee



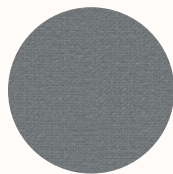
EJ138  
Black



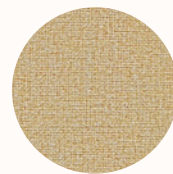
EJ154  
Adriatic



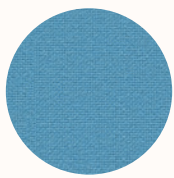
EJ169  
Clan



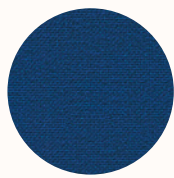
EJ172  
Chaucer



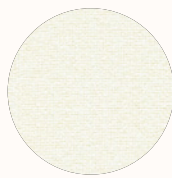
EJ173  
Austen



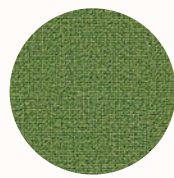
EJ175  
Inverness



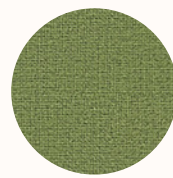
EJ180  
Cluanie



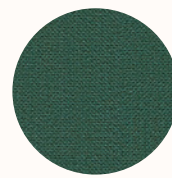
EJ184  
Vit



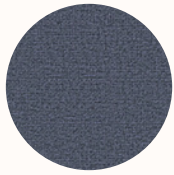
EJ185  
Staffa



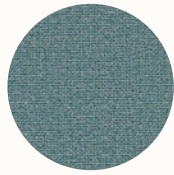
EJ186  
Fair Isle



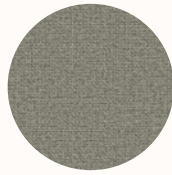
EJ187  
Lora



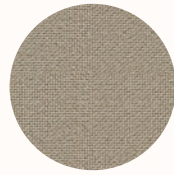
EJ188  
Easdale



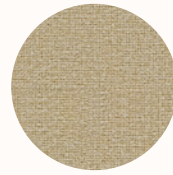
EJ189  
Ronay



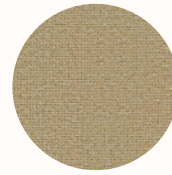
EJ190  
Hillswick



EJ191  
Shetland



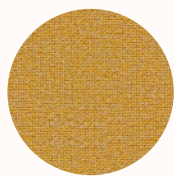
EJ192  
Lomond



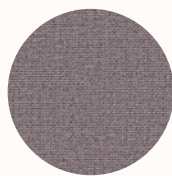
EJ193  
Beltane



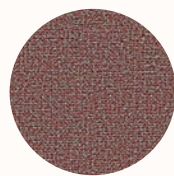
EJ194  
Lerwick



EJ195  
Maree



EJ196  
Denny



EJ197  
Lossie



## Screen / Panel

## Category A

**Camira Carlow**

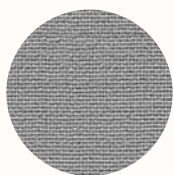
Carlow echoes the calm, gentle landscape of its Celtic namesake in rural Ireland. The fabric, like the county, invites you to escape into a place of tranquillity, discovering and exploring its hidden gems scattered throughout a vibrant textile tableau. This dobby weave panel fabric is brought to life in brave and intriguing colour mixes which can be teamed with our most popular upholstery fabrics as well as its panel partner Cara. Carlow is acoustically transparent, making it ideal as a decorative facing for sound absorbing boards.

**Composition:** 100% polyester

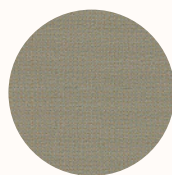
**Width:** Approx 170cm

**Weight:** 348 g/m

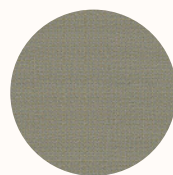
**Durability:** 65,000 Martindale



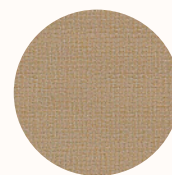
CLW01  
Tallow



CLW02  
Ballina



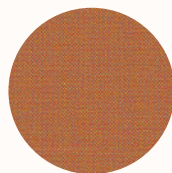
CLW03  
Roundwood



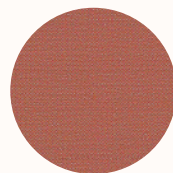
CLW04  
Quin



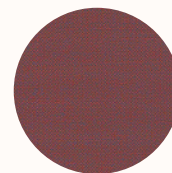
CLW05  
Callan



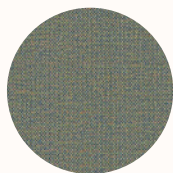
CLW06  
Navan



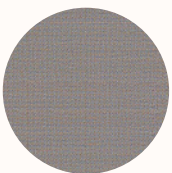
CLW07  
Dublin



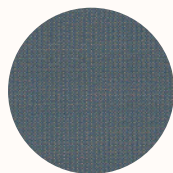
CLW08  
Redcross



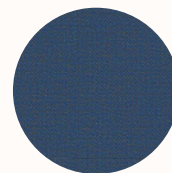
CLW09  
Convoy



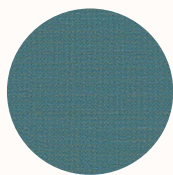
CLW10  
Ardee



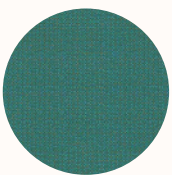
CLW11  
Wicklow



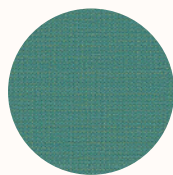
CLW12  
Malin



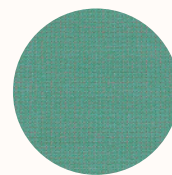
CLW13  
Sligo



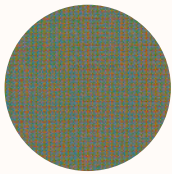
CLW14  
Bree



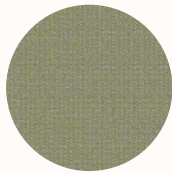
CLW15  
Cavan



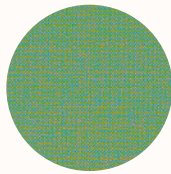
CLW16  
Mayo



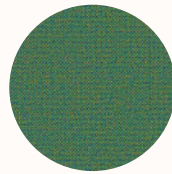
CLW17  
Balloo



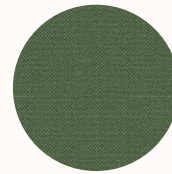
CLW18  
Carrick



CLW19  
Ardmore



CLW20  
Ennis



CLW21  
Emily



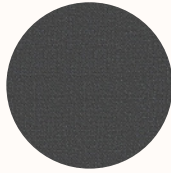
CLW22  
Avoca



CLW23  
Parteen



CLW24  
Glenamoy



CLW25  
Clifden



## Screen / Panel

## Category A

**Cute****Application:** Heavy Duty Commercial Upholstery for Screens**Composition:** 100% Polyester**Width:** 142cm**Weight:** 320g/m2**Use:** Screen**Durability:** 40,000 Martindales**Pilling:** 4**Cleaning:** 30° wash cycle, do not bleach, do not tumble dry, low temperature iron

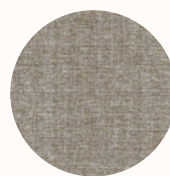
008

Alabaster



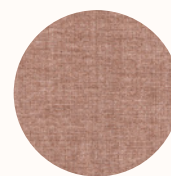
026

Wheat



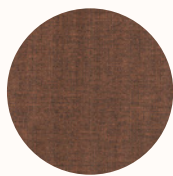
029

Whitewash



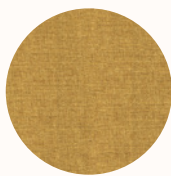
050

Peony



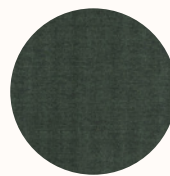
047

Oxide



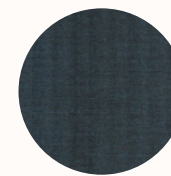
049

Husk



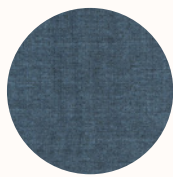
013

Hunter



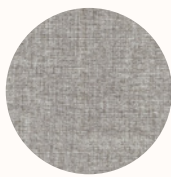
012

Atlantic



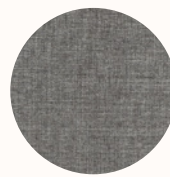
045

Cobalt



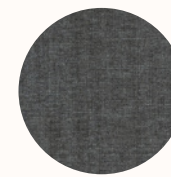
009

Mist



018

Pewter



021

Gunsmoke



073

Shadow



## Screen / Panel

## Category B

**Kvadrat Remix Screen**

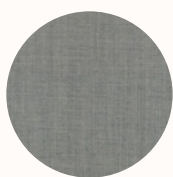
Remix Screen is a lighter version of the acclaimed textile Remix, which is specially developed for wall panels, deskscreens and similar applications. Like Remix, it is designed by Giulio Ridolfo. Remix Screen comes in 16 elegant colourways created matching the palette of Remix 3. Inspired by an extensive study of traditional Indigo dyeing undertaken by Giulio Ridolfo on his travels, these comprise subtle neutrals and natural notes, as well as bolder blue and orange hues. Suitable for contract use, Remix Screen is very durable and has a long life span. It is ideal for architects and designers who seek to configure interiors into different spaces with panels, screens and room-dividing furniture.

**Composition:** 90% new wool worsted 10% nylon

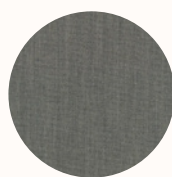
**Width:** Approx 170cm

**Weight:** 450 g/lin. m

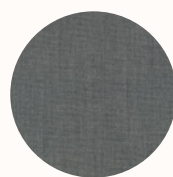
**Light Fastness:** 6-7



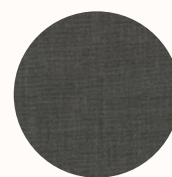
0128



0138



0148



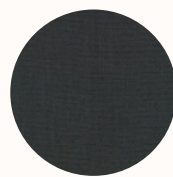
0158



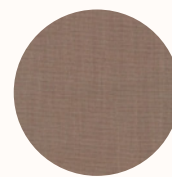
0188



0228



0288



0328



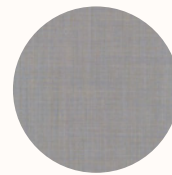
0358



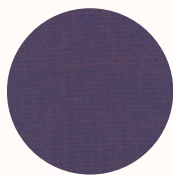
0408



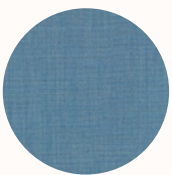
0528



0608



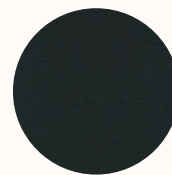
0688



0818



0908



0998



## Verse Panel Only

## Category B

## Camira Sonus

With a fibre felted finish and an appealing mélange effect, the Sonus range is the ideal accompaniment for a modern interior. An acoustically transparent fabric for use on panels, Sonus is the perfect enhancement for a range of vertical surfaces.

**Composition:** FHR: 72% Polyester, 18% Polyamide, 10% Viscose

FHU: 57% Polyester, 43% Polyamide

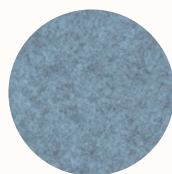
**Width:** Approx 170cm

**Weight:** 200 g/m2 ±10%

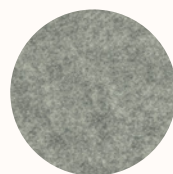
**Light Fastness:** Standard: 5 (ISO 105 - B02), FHR05: 4 (ISO 105 - B02)



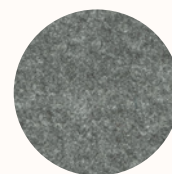
FHR02  
Voice



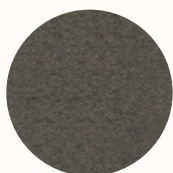
FHR06  
Audio



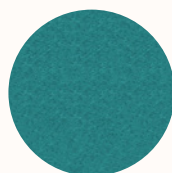
FHR03  
Beat



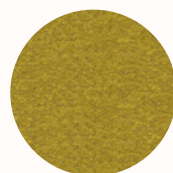
FHU04  
Music



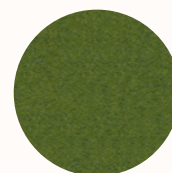
FHR07  
Melody



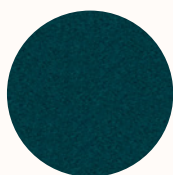
FHU11  
Rap



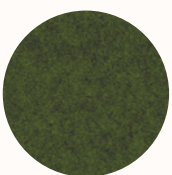
FHR01  
Song



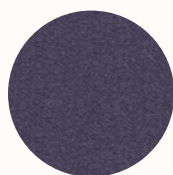
FHR12  
Acoustic



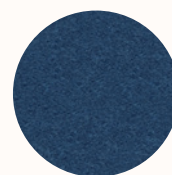
FHU15  
Lyric



FHU08  
Vocal



FHR13  
Soul



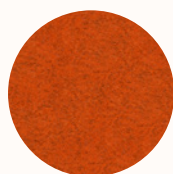
FHU14  
Classical



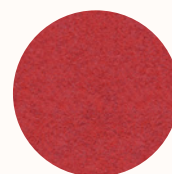
FHR16  
Verse



FHR05  
Amp



FHR09  
Pop



FHR17  
Chorus



FHU10  
Chime