

NORR11

Fabric/Leather Specification



CONTENTS:

Fabric

Upholstery Category 1	2.
Upholstery Category 2	10.
Upholstery Category 3	14.
Upholstery Category 4	25.
Upholstery Category 5	30.

CAT 1 - NINA LINEN

Nina Linen is a plane fabric with a natural linen look. Soft-looking and pleasingly neutral, Nina linen combines functionality with raw textures.

Composition: 39% Linen, 27% Jute, 24% Viscose, 10% Cotton

Width: 140cm

Weight: 1000 g

Durability: 30.000 Martindale

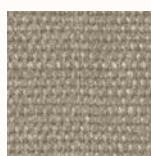
Piling: 4



COL 37



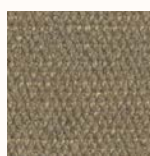
COL 2



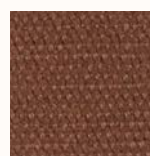
COL 53



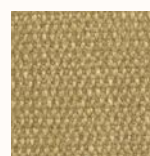
COL 31



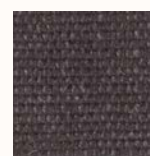
COL 140



COL 33



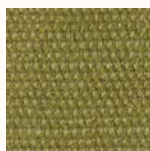
COL 32



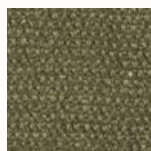
COL 63



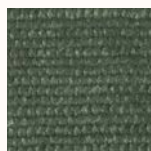
COL 6



COL 350



COL 64



COL 49



COL 309



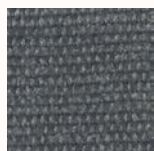
COL 5



COL 311



COL 352



COL 27



COL 23



COL 128



COL 58



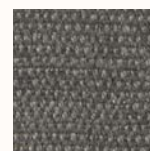
COL 54



COL 18



COL 51



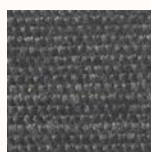
COL 28



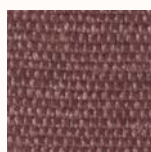
COL 55



COL 21



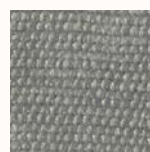
COL 52



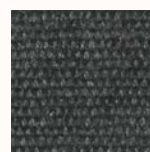
COL 46



COL 40



COL 39



COL 4

CAT 1 – BRUSSELS VELVET

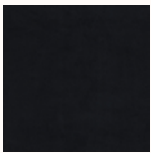
Brussels Velvet is a very elegant fabric that is eye-catching by its classic velour-like appearance. It also appeals by its soft, fleecy surface, particularly achieved by a longer pile. Brussels is 100% manufactured from polyester – its intrinsic values in terms of durability and resistance are therefore perfect too.

Composition: 100% polyester

Width: Approx 140cm

Durability: 100,000 Martindale

Piling: 4-5



Midnight Blue
1678



Taupe
710



Olive
751



Rose wood
1670

CAT 1 - CURA GABRIEL

Cura is a multi-purpose, two-coloured upholstery fabric made from 98% post-consumer recycled polyester. Use Cura for office furniture or lounge seating to transform workplaces into homey interiors.

Composition: 98% post-consumer recycled polyester, 2% polyester

Width: Approx 140cm

Weight: 420 g/m

Durability: 100,000 Martindale

Piling: 4-5

Sustainability: Standard 100 by OEKO-TEX, EU Ecolabel



CAT 1 - FAME GABRIEL

Fame is a unique woollen upholstery fabric with a wearability of 200,000 Martindale, and at the same time is extra soft and stretchable. The colour scale is very elegant and vibrant.

Composition: 95% New Zealand wool, 5% polyamide

Width: Approx 140cm

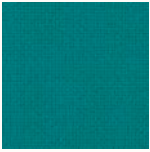
Weight: 630 g/m

Durability: 200,000 Martindale

Piling: 4

Sustainability: Standard 100 by OEKO-TEX, EU Ecolabel





67016



67067



67068



67069



68004



68035



68143



68144



68145



68146



68147



68148

CAT 1 – REMIX KVADRAT

Remix 2 looks uni-coloured from a distance but reveals subtle details and colour contrasts when viewed close-up. The textile features a tight, minimalistic weave, and derives its lively colour play from a combination of two different mélange yarns, which each combine up to three hues.

The new colours – carefully selected from 2600 samples– are inspired by an extensive study of traditional Indigo dyeing undertaken by Giulio Ridolfo on his travels. Centred around deep combinations of blues and rich natural reds, they also include subtly coloured neutrals.

Composition: 90% new wool (worsted), 10% nylon

Width: Approx 140cm

Weight: 420 g/m

Durability: 100,000 Martindale

Piling: 4

Sustainability: EU ecolabel "The Flower", Greenguard Gold certified, HPD, EPD



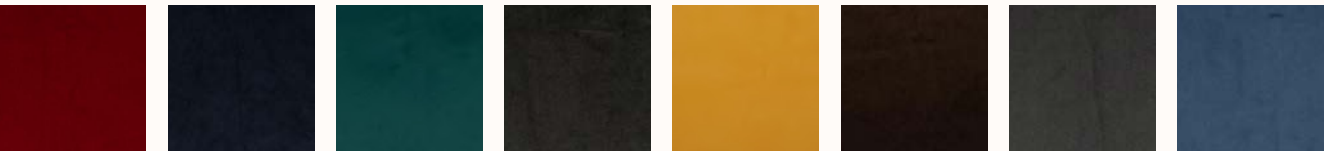
							
0733	0743	0753	0762	0773	0783	0796	0816
							
0823	0836	0842	0852	0866	0873	0906	0912
							
0923	0933	0942	0954	0962	0973	0982	0996

CAT 1 - Megan

Megan is a velvet in a sparkling color scheme. High, straight standing piles in a durable quality for all types of environments.

Composition: 100% Polyester

Durability: 170.000 Martindale



Megan 1 Megan 2 Megan 3 Megan 4 Megan 5 Megan 6 Megan 7 Megan 12



Megan 13 Megan 16 Megan 17 Megan 21 Megan 22 Megan 23 Megan 26 Megan 27



Megan 30 Megan 31 Megan 32 Megan 33 Megan 36 Megan 37 Megan 42 Megan 43



Megan 46

CAT 2 - BARNUM BOUCLÉ

Barnum Bouclé is a textured bouclé wool with a comfortable soft feel and is available in a various attractive colors. The fabric is durable and heavy enough to offer some acoustic absorption but soft enough to provide warmth and comfort.

Composition: 45% Cotton, 19% Viscose, 15% Wool, 13% Acetate, 8% Nylon

Width: 140cm

Weight: 950 g

Durability: 60.000 Martindale

Piling: 4



CAT 2 – CANVAS KVADRAT

Canvas is a vibrant woollen upholstery textile created by Giulio Ridolfo. Particularly well-suited to large surfaces thanks to its pronounced structure, it features a soft weave and an expanded palette inspired by the landscapes of Skagen, Denmark.

The melange yarn used to craft Canvas combines three colours, with six hues in every colour way. Consequently, the textile offers exceptional colour richness and an intriguing expression. From a distance, it has the calm surface of a uni-coloured textile. But, get closer, and shimmering colour nuances, delicate contrasts and an elegant structure emerge.

Composition: 90% new wool (worsted), 10% nylon

Width: Approx 140cm

Weight: 480 g/m

Durability: 100,000 Martindale

Piling: 4

Sustainability: EU ecolabel "The Flower", Greenguard Gold certified, HPD, EPD



CAT 2 – Breeze Fusion

Breeze Fusion is a richly textured, woollen upholstery fabric brought to life by intriguing colour blends. It offers superior durability, inherent fire resistance and a strong environmental profile.

Composition: 88% New Zealand wool / 12% polyamide

Width: 140 cm

Weight: 590 g/lin. m

Durability: 100,000 Martindale

Piling: 4-5



CAT 2 – ULTRA SORENSEN

One of the most versatile Protected leathers around, ULTRA is the perfect everyday type of leather. Buffed and embossed and truly nice to touch, the surface features a uniform grain pattern over the entire hide which gives it a consistent look. ULTRA has some additional amazing attributes. Thanks to its extremely strong protective finish, it's very easy to maintain. Stains don't even leave a mark once wiped away using a fresh cloth with water. What's more, as a leather with a heavy surface protection, ULTRA will take longer to show signs of aging or fading due to exposure to light.

Our ULTRA collection has passed a special testing of TVOC (Total Volatile Organic Compounds). Called ANSI/BIFMA M7.1-2011 (R2016), it measures emissions and other factors as to their effect on air quality. A TVOC certificate guarantees that no harmful emissions are released into the environment, thus contributing to a healthy indoor atmosphere.

Type: Protected leather

Hide Size: 3.5 – 4.5 sqm

Thickness: 0.9-1.1mm



CAT 3 – HALLINGDAL 65 KVADRAT

Kvadrat's first textile 'Hallingdal' has become the archetype of woollen textiles. The very durable upholstery fabric was originally designed in 1965 by Nanna Ditzel, and is now available in a version with an updated colour scale: Hallingdal 65.

Hallingdal 65 is made of wool and viscose, which complement each other well: the wool provides excellent durability and flexibility, whilst the viscose adds brilliance and depth to the colour. Both materials are dyed before they are spun, which highlights the rich texture of the fabric.

Composition: 70% new wool, 30% viscose

Width: Approx 130cm

Weight: 795 g/m

Durability: 100,000 Martindale

Piling: 3–4

Sustainability: EU Ecolabel, Greenguard Gold, HPD, EPD





0773



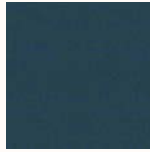
0810



0840



0850



0890



0907



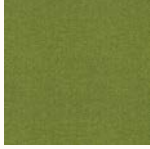
0944



0960



0968



0980

CAT 3 – STEELCUT TRIO KVADRAT

Steelcut Trio is a hardwearing woollen upholstery textile with the same construction as Steelcut. Originally designed by Frans Dijkmeijer, it comes in updated colourways crafted by Giulio Ridolfo.

The three-dimensional surface of Steelcut Trio resembles small pyramids or steel points. Despite the complexity of the textile's innovative weave, it has a simple, precise expression. Steelcut Trio is yarn-dyed and made from 3 differently coloured yarns.

Composition: 90% new wool (worsted), 10% nylon

Width: Approx 140cm

Weight: 770 g/m

Durability: 100,000 Martindale

Piling: 4

Sustainability: EU Ecolabel, Greenguard Gold, HPD, EPD





0946



0953



0966



0976



0983



0996

CAT 3 – FIORD KVADRAT

Fiord is a versatile woollen upholstery textile with a subtle three-dimensional look. Originally designed by Norwegian designer Tone Barnung, it comes in refreshed colours created in collaboration with Louise Sigvardt.

The construction of Fiord combines a mélange yarn with a uni-coloured yarn that creates pearl-like dots that play across the textile's surface. This sophisticated expression reflects a key source of inspiration behind the design: moonlight glittering like pearls on the rippling waters of a Norwegian fjord.

Composition: 92% new wool (worsted), 8% nylon

Width: Approx 140cm

Weight: 493 g/m

Durability: 60,000 Martindale

Piling: 4-5

Sustainability: EU Ecolabel, Greenguard Gold, HPD, EPD



CAT 3 - MOSS

The second design by Vincent van Duysen and Anna Vilhelmine Ebbesen is the distinctive upholstery fabric Moss. The mixture of twisted yarn and chenille gives the fabric surface a textured structure with an appearance of movement, and also creates a soft handle which adds a special dimension to the furniture it covers. The twenty-two colourways are either one- or two-tone combinations inspired by Vincent van Duysen's own home and range from cool cement and soft blue to oily green, curry yellow and the shades of natural wood.

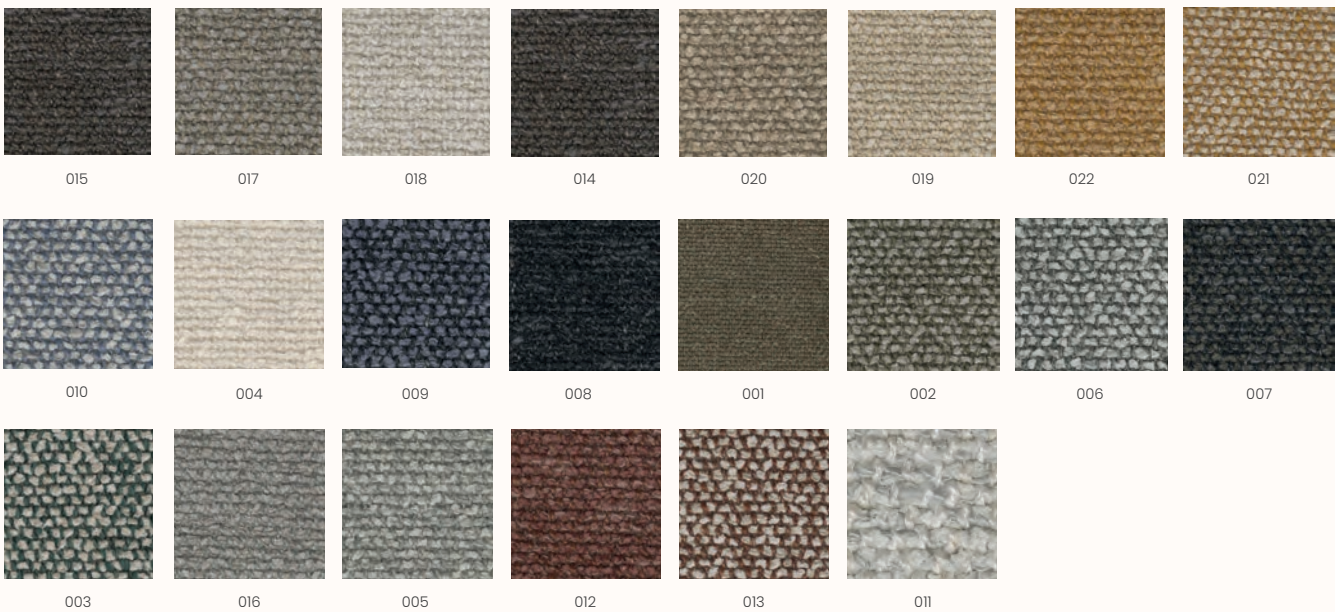
Composition: 52% cotton 22% viscose 14% polyacrylic 6% linen 3% nylon 3% polyester

Width: 138 cm

Weight: 918 g/lin. m

Durability: 50,000 Martindale

Piling: 4-5



CAT 3 – SAFIRE

Safire's coarse surface structure gives a subtle handwoven appearance that is both unique and dynamic, adding a special and unique dimension to this upholstery fabric. The thick boucle and chenille yarns contribute to its wooly handle and soft appeal but also gives a vibrant two-tone effect. The colour palette includes both quiet natural shades and strong, bold combinations.

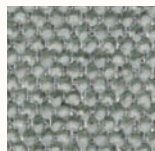
Composition: 43% viscose 17% polyacrylic 15% new wool 9% cotton 8% polyester 8% linen

Width: 140 cm

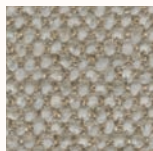
Weight: 1,010 g/lin. m

Durability: 44,000 Martindale

Piling: 3



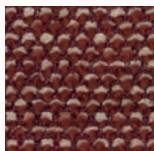
006



014



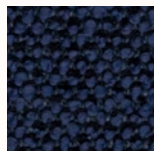
005



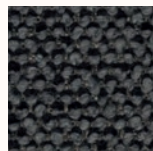
013



008



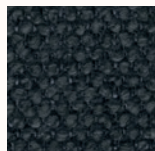
011



009



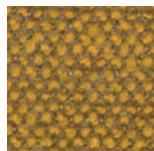
012



010



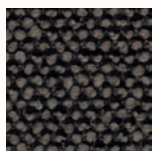
007



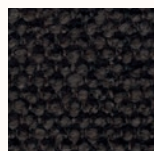
017



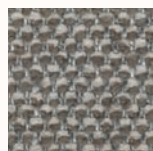
016



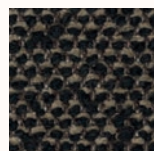
003



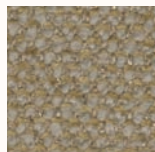
002



004



001

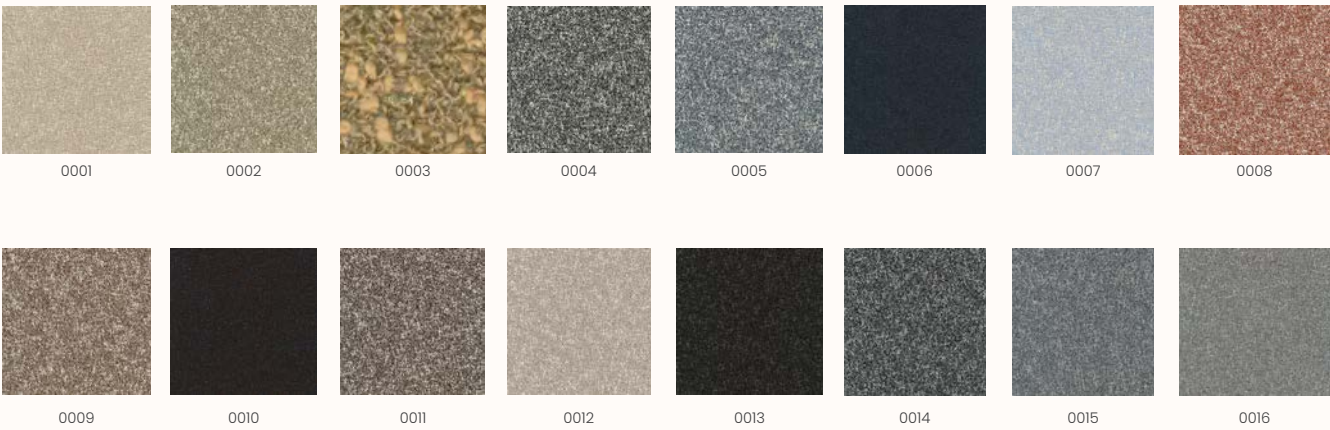


015

CAT 3 – ZERO

The influence of Parisian couture clothing can be seen in this elegant and irregular bouclé upholstery textile. The pearl effect yarn is used in both warp and weft giving a luxurious handle and a sophisticated appearance. The sixteen colourways range from tonal through to contrasting ‘salt and pepper’ combinations.

Composition: 65% cotton 20% polyacrylic 15% polyester
Width: 140 cm
Weight: 740 g/lin. m
Durability: 70,000 Martindale
Piling: 5



CAT 3 – Nuance

Nuance has a remarkable depth and dimension that exudes authenticity, with the added advantage that it's designed to be durable. It's a new type of protected leather developed in collaboration with Space Copenhagen, where the nuances are seen in the natural texture as well as the tones. The natural patterns and imperfections are visible, reflecting the innate beauty of each hide.

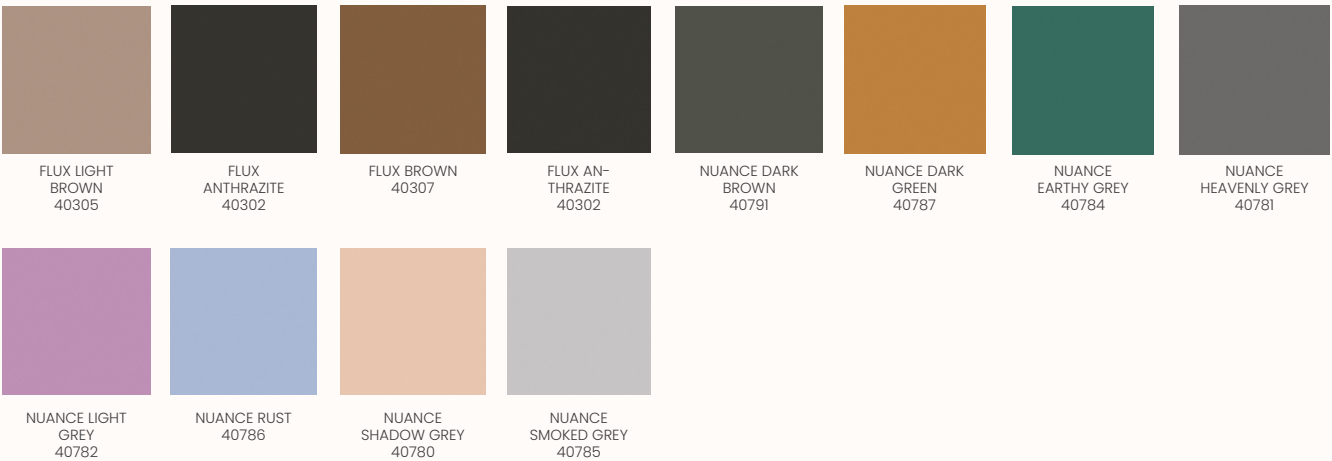
Composition: 100% Protected Leather



CAT 3 – Flux

Flux is a type of protected leather that resembles nubuck, with a matt look akin to neoprene. It’s an innovative leather developed in collaboration with architect and designer David Thulstrup, featuring a velvety-soft surface with a muted effect that’s ultra modern. In addition to all the advantages of protection, involving a very fine surface coating that’s unperceivable to the eye, which renders Flux resistant to scuffing and fading.

Composition: 100% Protected Leather



CAT 3 – Envy

Envy is an accessible leather with an aura of elegance. Smooth to the touch with a slight sheen to the surface, it's a captivating leather that awakens the senses. Look closer and you can see very subtle natural markings, which are minimised via a special sanding process. Add to that a light, transparent wax that helps protect the surface and the result is a lovely feel with a brilliant sense of depth.

Composition: 100% Aniline Leather



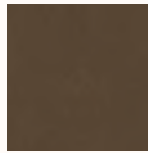
ENVY BLACK
20321



ENVY OLIVE
20324



ENVY
ANTHRAZITE
20323



ENVY NOUGAT
20322



ENVY COGNAC
20320

CAT 4 - DUNES SORENSEN

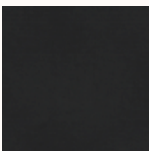
DUNES® is an exclusive Aniline leather with a natural, rustic look and a sublime, almost velvety tactile feel. Achieved via a process of sanding and applying a special type of leather oil to the surface. At the same time, DUNES® boasts a matt look that's raw with a touch of understated elegance. Part of DUNES®' extra appeal are the natural markings which bring a unique personality to each hide. Colour tones will also vary from hide to hide and within each individual hide. Watch for a beautiful patina that will appear over time as a result of the leather's usage, exposure to daylight and interior lighting. With use, the leather will become shinier and smoother over time.

DUNES® collection has received the Nordic Swan Ecolabel. A highly-respected certification verifying that it meets their rigorous requirements regarding the environment, use of energy and resources. Additionally, as a result of meeting a separate set of criteria, DUNES® can be specified as one of the components as part of the certification process for a design to be awarded the EU Ecolabel (EU Blomst in Danish).

Type: Aniline leather

Hide Size: 4.5 - 5.5 sqm

Thickness: 1.1-1.3mm



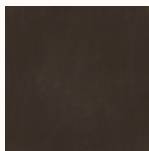
Anthrazite
21003



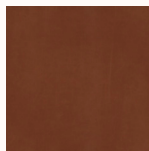
Grey
21007



Racing Green
21005



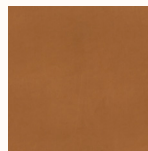
Dark Brown
21001



Rust
21002



Camel
21004



Cognac
21000

CAT 4 - SPECTRUM/NOIR SORENSEN

SPECTRUM/NOIR is a soft Semi-aniline leather with a subtle texture that looks uniform, thanks to a light surface finish that helps protect the leather from dirt, stains and fading resulting from exposure to light. As a natural, full-grain leather, the visible pores on the smooth surface add a unique, authentic character to a matt leather with a subtle shine.

Our SPECTRUM/NOIR collection has received the LEATHER STANDARD by OEKO-TEX® certification. A scientifically-founded, world-wide testing and certification system for leather. Based on international test standards and other recognised test processes, the certification involves around 100 test parameters. Including numerous environmentally-relevant substances and chemicals harmful to the health. The more intensively an article comes into contact with the skin, the stricter the human-ecological requirements that it must fulfil.

Type: Semi-aniline leather

Hide Size: 5.0 – 6.0 sqm

Thickness: 1.0-1.2mm

							
Adria 30137	Agave 30098	Almond 30150	Anthrazite 30134	Apricot 30122	Autumn 30099	Bark 30148	Black 30114
							
Blackberry 30115	Bottle Green 30083	Brandy 30155	Brick 30119	Brown 30087	Burn 30092	Burned Orange 30173	Cactus 30081
							
Camel 30106	Chocolate 30113	Cinnamon 30146	Cloud 30079	Coffee 30112	Cognac 30107	Concrete 30082	Coral 30118
							
Corn 30103	Cream 30101	Dark Blue 30085	Dark Grey 30162	Earth 30149	Eggshell 30100	Forest 30127	Ginger 30096
							
Glacier 30158	Granite 30156	Green 30167	Grey 30131	Havana 30110	Honey 30102	Ice 30075	Ivory 30161
							
Kiwi 30129	Lava 30132	Lavender 30088	Leaf 30168	Light Tan 30152	Mandarin 30089	Mango 30120	Marble 30105

							
Marine 30139	Mineral 30160	Mix 30147	Mocca 30153	Moon 30077	Moss 30128	Mud 30086	Mushroom 30169
							
Mustard 30104	Nougat 30095	Ocean 30138	Oyster 30157	Papaya 30121	Parchment 30151	Park 20097	Petroleum 30126
							
Redbrown 30172	Royal 30166	Ruby 30116	Rust 30109	Safari 30145	Safran 30170	Sand 30076	Sandstone 30133
							
Silver Grey 30130	Space 30078	Spring 30080	Stone 30144	Storm 30084	Summer 30091	Sunset 30090	Tan 30108
							
Terra 30094	Terracotta 30171	Tobacco 30111	Toffee 30154	Walnut 30093	White 30140	Wine Red 30117	

CAT 4 - BARU

An ultra-soft woven woollen bouclé, Baru feels like shorn fleece and has a comforting volume created by the elasticity of the wool fibre and the finishing processes. Yarn dyed with one colour in warp and another in weft, it has the benefits of a woollen textile but a softer feel. The texture of the bouclé coupled with a slight shine from the acrylic blend creates a playful effect as the colour catches the light. Minimal contrasts in the yarns produce strong hues such as midnight, forest green, maroon and dark chocolate, while a darker base adds depth. Softer shades of snow, light grey, ash, camel, vanilla and moss green have a mélange effect from the contrasting base.

Composition: 87% wool 10% polyester 3% polyamide

Width: 140 cm

Weight: 770 g/lin. m

Durability: 65,000 Martindale

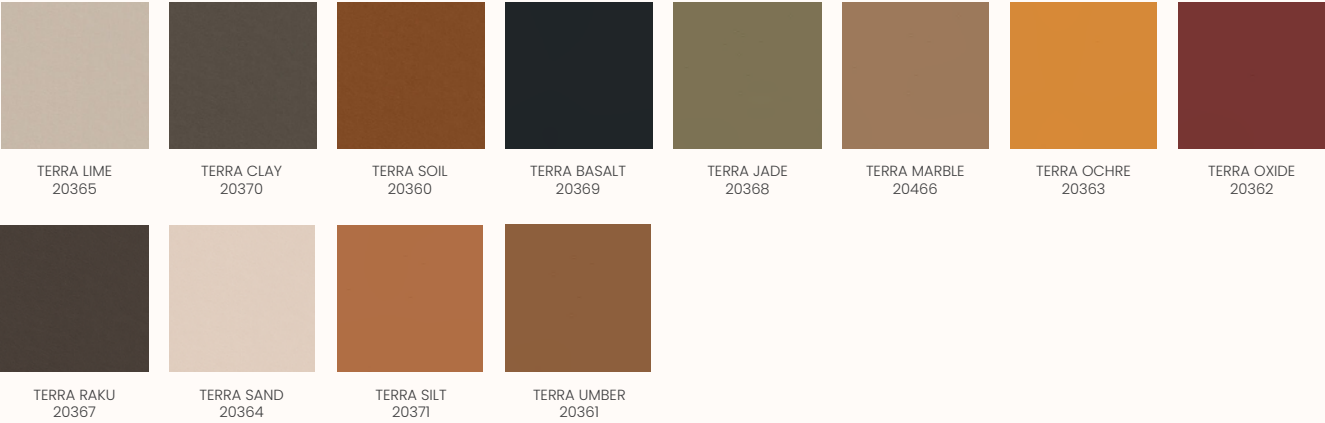
Piling: 5



CAT 4 – Terra

Terra is a new type of innovative high-end leather developed in collaboration with Norm Architects, known for their thoughtful design philosophy that seeks to engage the senses and enrich the quality of life. It's an extremely soft aniline leather featuring a silky-matt surface with a subtle shine and a velvety tactile feel that evokes one's senses, offering a touch of modern sophisticated elegance.

Composition: 100% Aniline Leather



CAT 5 – SHEEPSKIN SCANDILOCK

Skandilock Curly 17mm is developed for furniture upholstery but can also be used for different furnishing assignments. The wool has a curly texture and is high in density which makes it durable and soft. Curly 17mm comes in three color collections. In the Classic Collection, the wool has been dyed with highlighted tips and darker base which gives the overall appearance a beautiful marbled finish. In the Standard Collection the wool is dyed in one color tone which gives an even end result that enhances the curly texture of the wool. Limited Collection are colors that varies in stock and therefore the lead times can be longer when ordered in larger quantities.

Original Raw Material: SAustralia crossbred, lamb/sheep

Wool Length: 17mm

Leather Thickness: 1-3mm

Classic Collection



Standard Collection



Limited Collection

