

# House Screen Specification

## Category A

Screen / Panel - Zenith Woven	<a href="#">4</a>
Screen / Panel - Camira Artisan	<a href="#">5</a>
Screen / Panel - Camira Bond	<a href="#">6</a>
Screen / Panel - Kvadrat Relate Screen	<a href="#">7</a>
Screen / Panel - Camira UK Cara	<a href="#">8</a>
Screen / Panel - Camira UK Carlow	<a href="#">10</a>

## Category B

Screen / Panel - Kvadrat Remix Screen	<a href="#">18</a>
Screen / Panel - Camira UK ERA170	<a href="#">19</a>
Panel only - Camira UK Sonus	<a href="#">20</a>

PRODUCT	CAT A						CAT B		
	Screen/Panel Zenith Woven	Screen/Panel Camira Artisan	Screen/Panel Camira Bond	Screen/Panel Kvadrat Relate Screen	Screen/Panel Camira Cara	Screen/Panel Camira Carlow	Screen/Panel Kvadrat Remix Screen	Screen/Panel Camira ERA	Panel Only Camira Sonus
<b>ZENITH</b>									
Alpha Space	•	•	•	•	•	•	•	•	–
Precinct Screens	•	•	•	•	•	•	•	•	–
Slide on Divider	•	•	•	•	•	•	•	•	–
Framed Screens S30/S50	•	•	•	•	•	•	•	•	–
Cloud Screen	–	–	–	–	–	–	–	–	–
Verse	•	•	•	•	•	•	•	•	•

• Available – Not available

## Screen / Panel

## Category A

## Zenith Woven

**Composition:** 100% polyester

**Width:** 170cm

**Weight:** 560g

**Use:** Screen

**Abrasion:** 60,000 Martindale Rubs

**Light Fastness:** ISO 105 B02 Grade 5-6

**Fire Test:** BS5852 Section 4/part 1

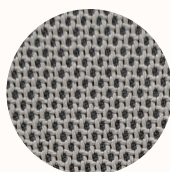
TB117 Section 1

ASI530 Part 3

**Fabric Care:** Do not wash, do not bleach, do not tumble dry, iron at medium temperature (max 130°C), professional dry cleaning.



01 Cloud



02 Storm



03 Coal



04 Ink



05 Clay



## Screen / Panel

## Category A

**Camira Artisan**

Heavy duty commercial screen fabric. Linen look textural fabric with 10 great useable neutrals and sharp brights.

**Application:** Commercial Screen Fabric (no upholstery)

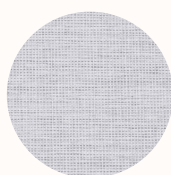
**Composition:** 100% Polyester

**Width:** 170cm

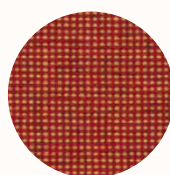
**Abrasion Resistance:** 65,000+ Martindale

**Flammability:** AS1530.3, ISO5660

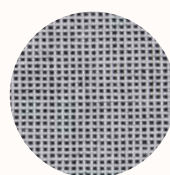
**Cleaning:** Do not remove any part for separate cleaning. Protect from direct sunlight. Vacuum regularly using low suction. Rotate reversible cushions regularly. Professional cleaning recommended.



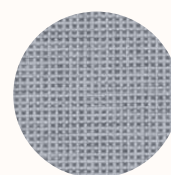
Envisage



Compose



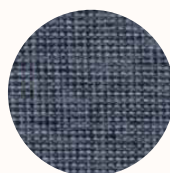
Perceive



Invent



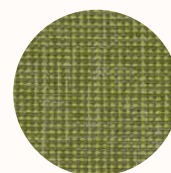
Embark



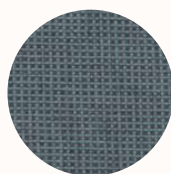
Generate



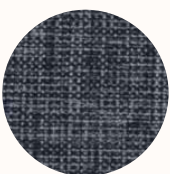
Discover



Create



Imagine



Construct



## Screen / Panel

## Category A

**Camira Bond**

Heavy duty commercial upholstery and screen fabric. Linen look textural fabric with 12 great useable neutrals and sharp brights. Bond is ideal as a Screen or Upholstery fabric.

**Application:** Upholstery / Screen

**Composition:** 100% Polyester

**Width:** 170cm

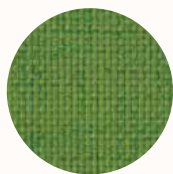
**Weight:** 211g/m<sup>2</sup>

**Abrasion Resistance:** 70,000+ Martindale

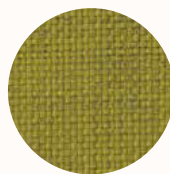
**Flammability:** AS1530 Part 3

**Qualities:** Soil Repellency treatment

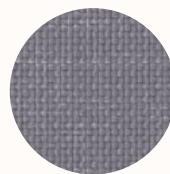
**Cleaning:** Do not remove any part for separate cleaning. Protect from direct sunlight. Vacuum regularly using low suction. Rotate reversible cushions regularly. Professional cleaning recommended.



Leaf



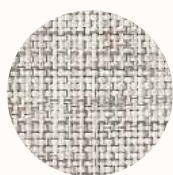
Lemoncello



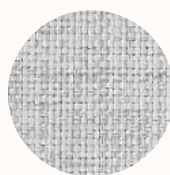
Shark



Snow



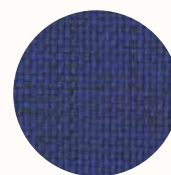
Linen



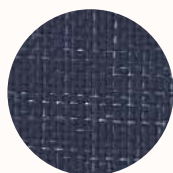
Smoke



Spring



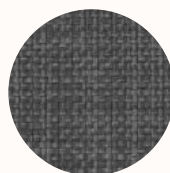
Royal



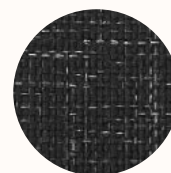
Navy



Garnet



Grey Haze



Jet



## Screen / Panel

## Category A

**Kvadrat Relate Screen**

Relate Screen is a special version of the sophisticated twill-woven upholstery textile Relate developed for wall panels, desk screens and similar applications. Patricia Urquiola has created both designs to rethink the concept of melange. While Relate Screen is identical in composition to Relate, it has a more open structure. A faux-uni, it initially appears monochromatic yet, under closer inspection, reveals a diagonal weave which fluidly blends two different coloured yarns. Relate Screen's twill-woven construction captures a delicate sense of movement and subtly references the fashion world. The textile also features a soft hand and an expression that resembles natural fibres.

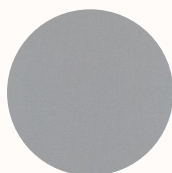
**Composition:** 100% Trevira CS

**Width:** Approx 170cm

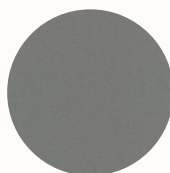
**Weight:** 470 g/lin.

**Pilling:** 3-4 (ISO 1-5)

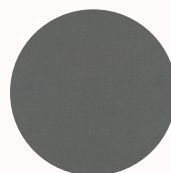
**Light Fastness:** 5-7 (ISO 1-8)



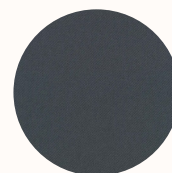
0128



0158



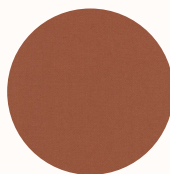
0168



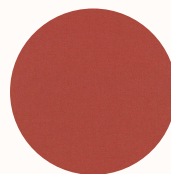
0178



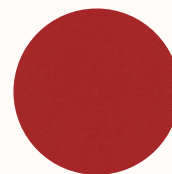
0388



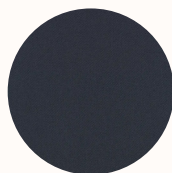
0468



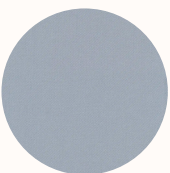
0568



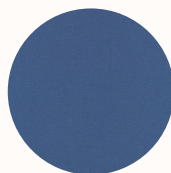
0648



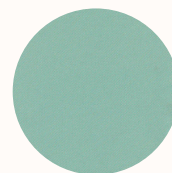
0698



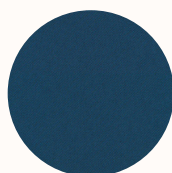
0718



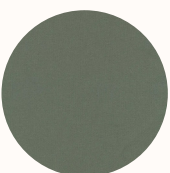
0778



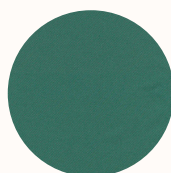
0828



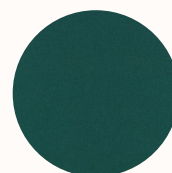
0888



0948



0968



0988



## Screen / Panel

## Category A

**Camira Cara**

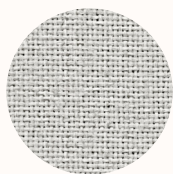
Cara is a plain weave panel fabric available in a wide selection of commercial colourways. One of our most popular vertical surface fabrics, Cara is used extensively on desk screens, wallsides and on pin boards.

This fabric is largely acoustically transparent and as such is ideal to be used as a decorative facing for sound absorbing boards.

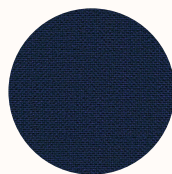
**Composition:** 100% polypropylene

**Width:** Approx 170cm

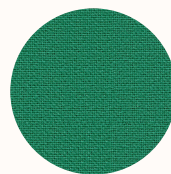
**Weight:** 220 g/m2



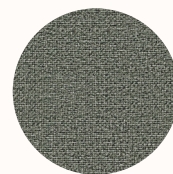
EJ004  
Glass



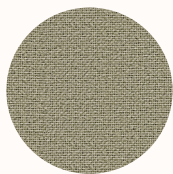
EJ011  
Walten



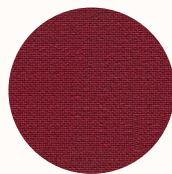
EJ015  
Carron



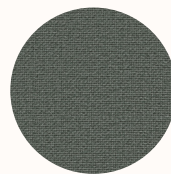
EJ016



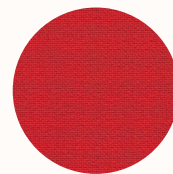
EJ033  
Spray



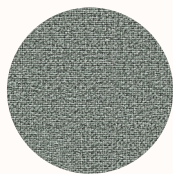
EJ038  
Tummel



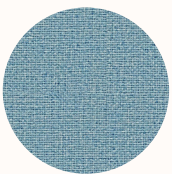
EJ048  
Merrick



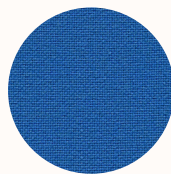
EJ076  
Pitlochry



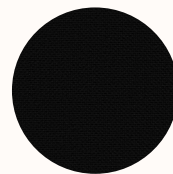
EJ104  
Lead



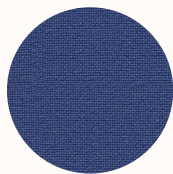
EJ105  
Dolphin



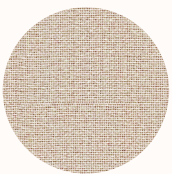
EJ125  
Galilee



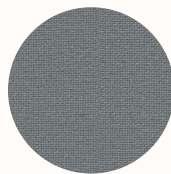
EJ138  
Black



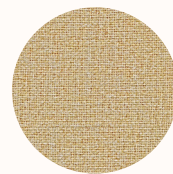
EJ154  
Adriatic



EJ169  
Clan

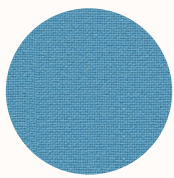


EJ172  
Chaucer

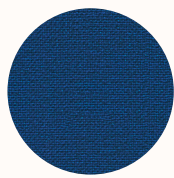


EJ173  
Austen

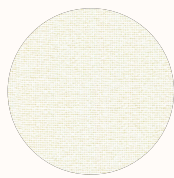




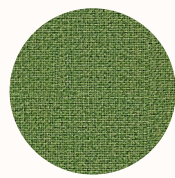
EJ175  
Inverness



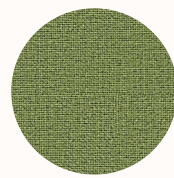
EJ180  
Cluanie



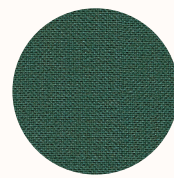
EJ184  
Vit



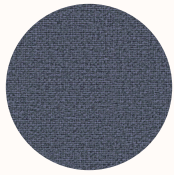
EJ185  
Staffa



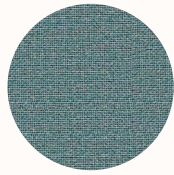
EJ186  
Fair Isle



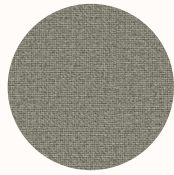
EJ187  
Lora



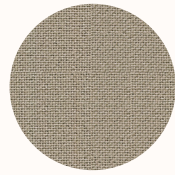
EJ188  
Easdale



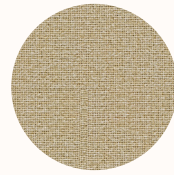
EJ189  
Ronay



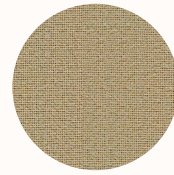
EJ190  
Hillswick



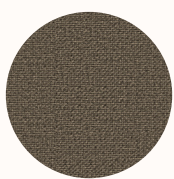
EJ191  
Shetland



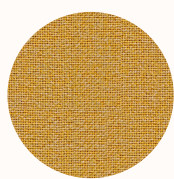
EJ192  
Lomond



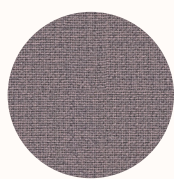
EJ193  
Beltane



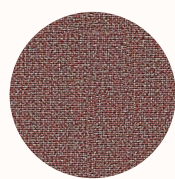
EJ194  
Lerwick



EJ195  
Maree



EJ196  
Denny



EJ197  
Lossie

## Screen / Panel

## Category A

**Camira Carlow**

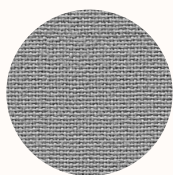
Carlow echoes the calm, gentle landscape of its Celtic namesake in rural Ireland. The fabric, like the county, invites you to escape into a place of tranquillity, discovering and exploring its hidden gems scattered throughout a vibrant textile tableau. This dobby weave panel fabric is brought to life in brave and intriguing colour mixes which can be teamed with our most popular upholstery fabrics as well as its panel partner Cara. Carlow is acoustically transparent, making it ideal as a decorative facing for sound absorbing boards.

**Composition:** 100% polyester

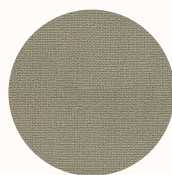
**Width:** Approx 170cm

**Weight:** 348 g/m

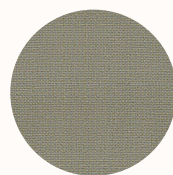
**Durability:** 65,000 Martindale



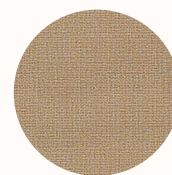
CLW01  
Tallow



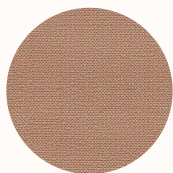
CLW02  
Ballina



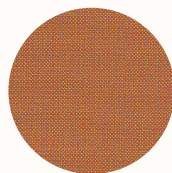
CLW03  
Roundwood



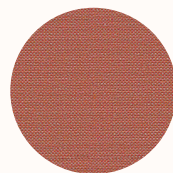
CLW04  
Quin



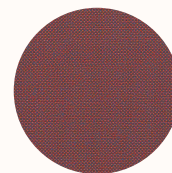
CLW05  
Callan



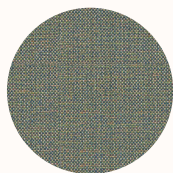
CLW06  
Navan



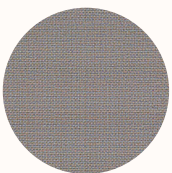
CLW07  
Dublin



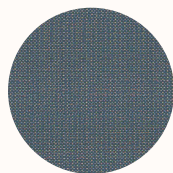
CLW08  
Redcross



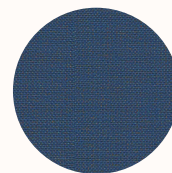
CLW09  
Convoy



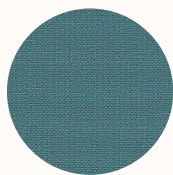
CLW10  
Ardee



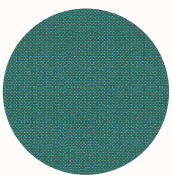
CLW11  
Wicklow



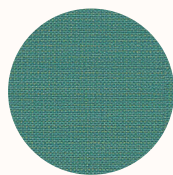
CLW12  
Malin



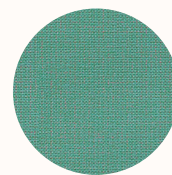
CLW13  
Sligo



CLW14  
Bree

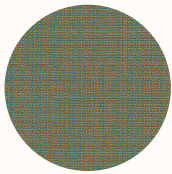


CLW15  
Cavan

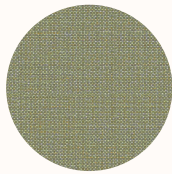


CLW16  
Mayo

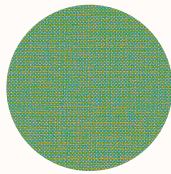




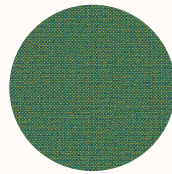
CLW17  
Balloo



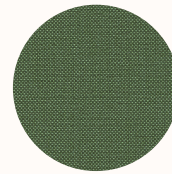
CLW18  
Carrick



CLW19  
Ardmore



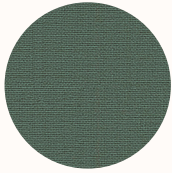
CLW20  
Ennis



CLW21  
Emily



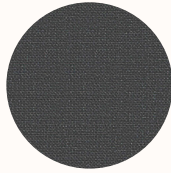
CLW22  
Avoca



CLW23  
Parteen



CLW24  
Glenamoy



CLW25  
Clifden



## Screen / Panel

## Category B

**Kvadrat Remix Screen**

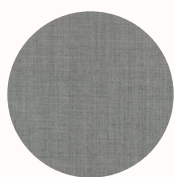
Remix Screen is a lighter version of the acclaimed textile Remix, which is specially developed for wall panels, deskscreens and similar applications. Like Remix, it is designed by Giulio Ridolfo. Remix Screen comes in 16 elegant colourways created matching the palette of Remix 3. Inspired by an extensive study of traditional Indigo dyeing undertaken by Giulio Ridolfo on his travels, these comprise subtle neutrals and natural notes, as well as bolder blue and orange hues. Suitable for contract use, Remix Screen is very durable and has a long life span. It is ideal for architects and designers who seek to configure interiors into different spaces with panels, screens and room-dividing furniture.

**Composition:** 90% new wool worsted 10% nylon

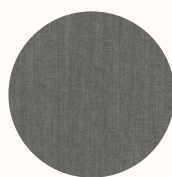
**Width:** Approx 170cm

**Weight:** 450 g/lin. m

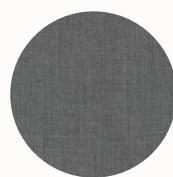
**Light Fastness:** 6-7



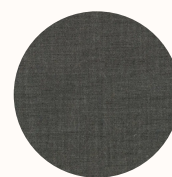
0128



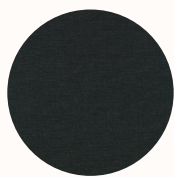
0138



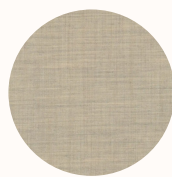
0148



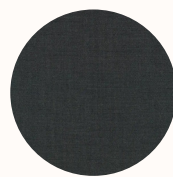
0158



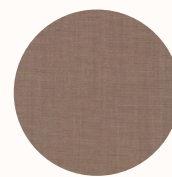
0188



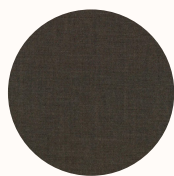
0228



0288



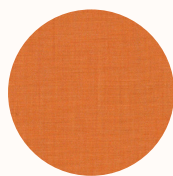
0328



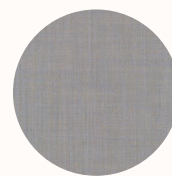
0358



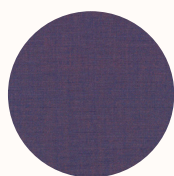
0408



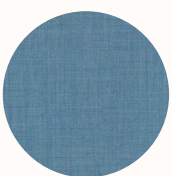
0528



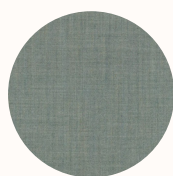
0608



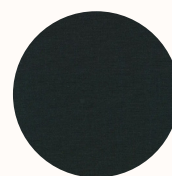
0688



0818



0908



0998



## Screen / Panel

## Category B

**Camira Era**

Era is a subtle, two tone polyester fabric containing stretch in both directions for use on panels, pods and soft seating. The baby herringbone weave offers an understated contemporary texture while its colouring technique provides close up intrigue. The palette incorporates playful brights and sophisticated muted tones.

**Composition:** 100% Polyester

**Width:** Approx 170cm

**Weight:** 320 g/m2 ±5%

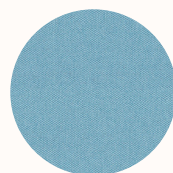
**Light Fastness:** 5 (ISO 105 - B02)



CSX30  
Transition



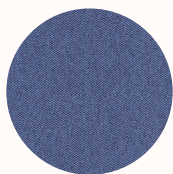
CSX01  
Futurist



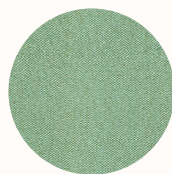
CSX20  
Aeon



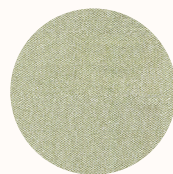
CSX38  
Allowance



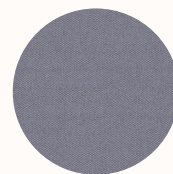
CSX42  
Range



CSX36  
Notation



CSX33  
Analogue



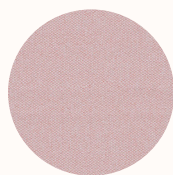
CSX11  
Forecast



CSX23  
Occurrence



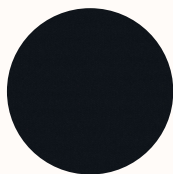
CSX41  
Quota



CSX19  
Calendar



CSX31  
Splitsecond



CSX14  
Forward



## Verse Panel only

## Category B

## Camira Sonus

With a fibre felted finish and an appealing mélange effect, the Sonus range is the ideal accompaniment for a modern interior. An acoustically transparent fabric for use on panels, Sonus is the perfect enhancement for a range of vertical surfaces.

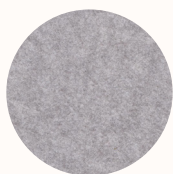
**Composition:** FHR: 72% Polyester, 18% Polyamide, 10% Viscose

FHU: 57% Polyester, 43% Polyamide

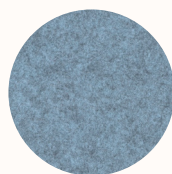
**Width:** Approx 170cm

**Weight:** 200 g/m2 ±10%

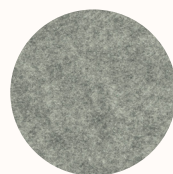
**Light Fastness:** Standard: 5 (ISO 105 - B02), FHR05: 4 (ISO 105 - B02)



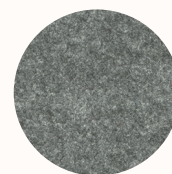
FHR02  
Voice



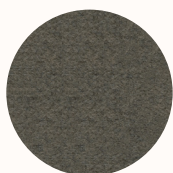
FHR06  
Audio



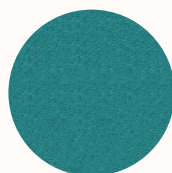
FHR03  
Beat



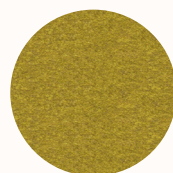
FHU04  
Music



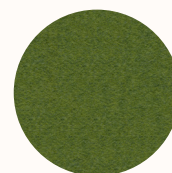
FHR07  
Melody



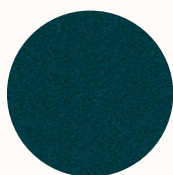
FHU11  
Rap



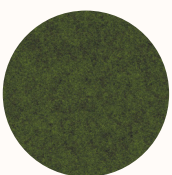
FHR01  
Song



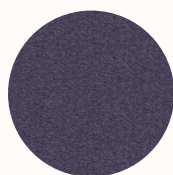
FHR12  
Acoustic



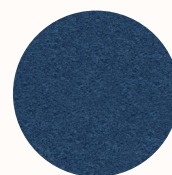
FHU15  
Lyric



FHU08  
Vocal



FHR13  
Soul



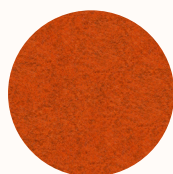
FHU14  
Classical



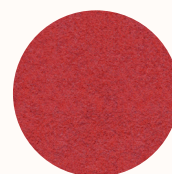
FHR16  
Verse



FHR05  
Amp



FHR09  
Pop



FHR17  
Chorus



FHU10  
Chime