

Verse Screen Fabric Specification



CONTENTS:

Category A

Zenith Woven	2
Cute	3
At work Artisan	4
At work Bond	5
Kvadrat Relate Screen	6

Category B

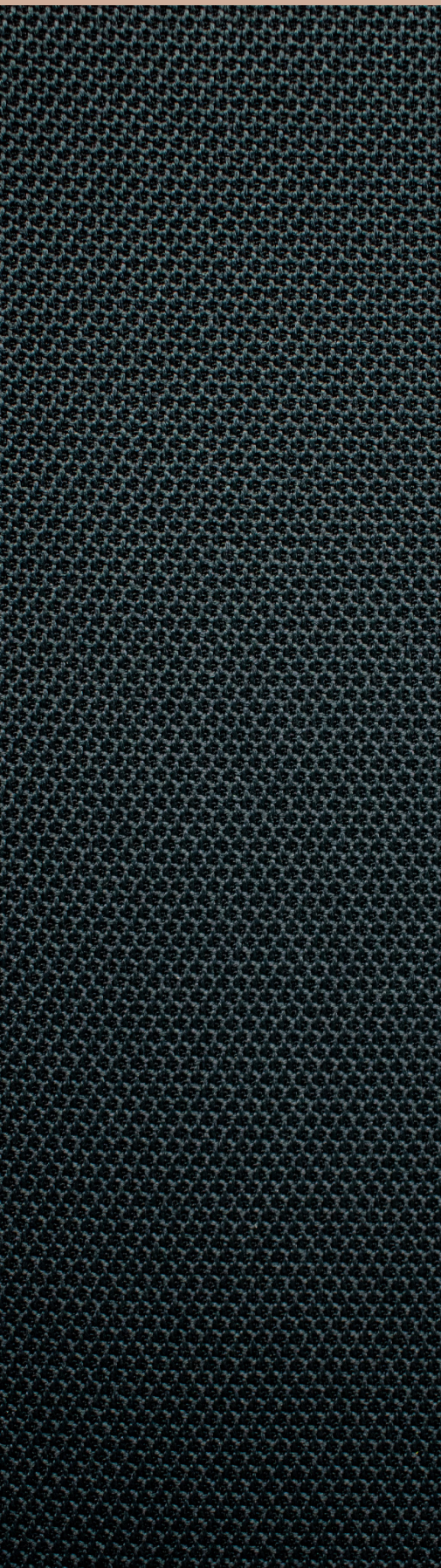
At work with Camira Cara	7
At work with Camira Carlow	9
Kvadrat Remix Screen	11

Category C

At work with Camira Sonus	12
---------------------------	--------------------

Screen / Panel

Category A



Zenith Woven

Composition: 100% polyester

Width: 170cm

Weight: 560g

Use: Screen

Abrasion: 60,000 Martindale Rubs

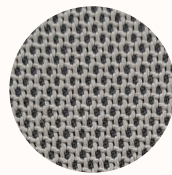
Light Fastness: ISO 105 B02 Grade 5-6

Fire Test: BS5852 Section 4/part 1
TB117 Section 1
ASI530 Part 3

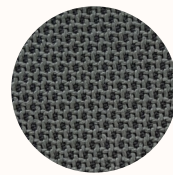
Fabric Care: Do not wash, do not bleach, do not tumble dry, iron at medium temperature (max 130°C), professional dry cleaning.



01 Cloud



02 Storm



03 Coal



04 Ink



05 Clay

Screen / Panel

Category A



Cute

Application: Heavy Duty Commercial Upholstery for Screens

Composition: 100% Polyester

Width: 142cm

Weight: 320g/m²

Use: Screen

Durability: 40,000 Martindales

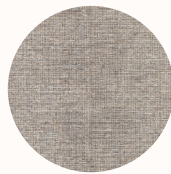
Pilling: 4

Cleaning: 30° wash cycle, do not bleach, do not tumble dry, low temperature iron



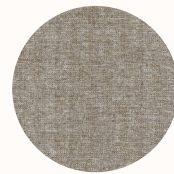
008

Alabaster



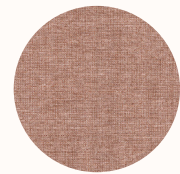
026

Wheat



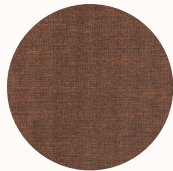
029

Whitewash



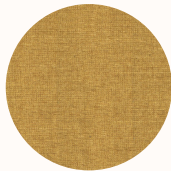
050

Peony



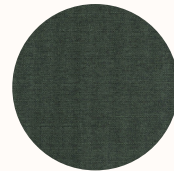
047

Oxide



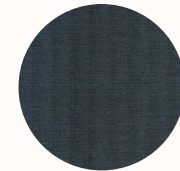
049

Husk



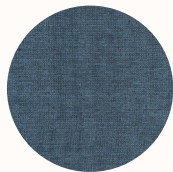
013

Hunter



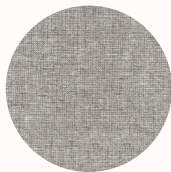
012

Atlantic



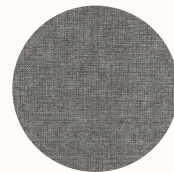
045

Cobalt



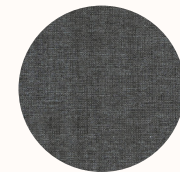
009

Mist



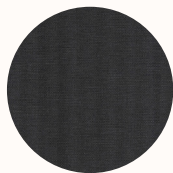
018

Pewter



021

Gunsmoke



073

Shadow

Screen / Panel

Category A



At work Artisan

Heavy duty commercial screen fabric. Linen look textural fabric with 10 great useable neutrals and sharp brights.

Application: Commercial Screen Fabric (no upholstery)

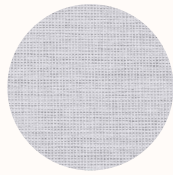
Composition: 100% Polyester

Width: 170cm

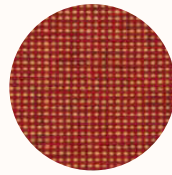
Abrasion Resistance: 65,000+ Martindale

Flammability: ASI530.3, ISO5660

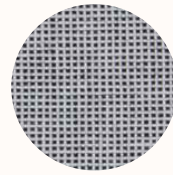
Cleaning: Do not remove any part for separate cleaning. Protect from direct sunlight. Vacuum regularly using low suction. Rotate reversible cushions regularly. Professional cleaning recommended.



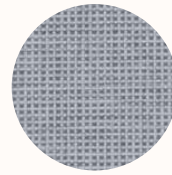
Envisage



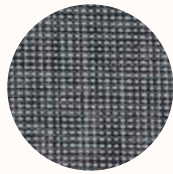
Compose



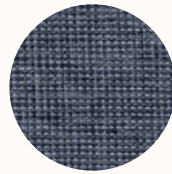
Perceive



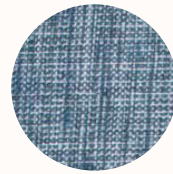
Invent



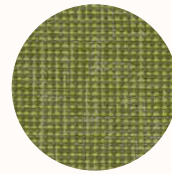
Embark



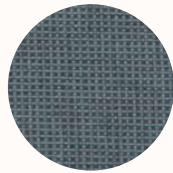
Generate



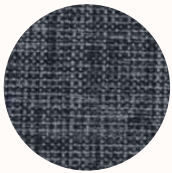
Discover



Create



Imagine



Construct

Screen / Panel

Category A



At work Bond

Heavy duty commercial upholstery and screen fabric. Linen look textural fabric with 12 great useable neutrals and sharp brights. Bond is ideal as a Screen or Upholstery fabric.

Application: Upholstery / Screen

Composition: 100% Polyester

Width: 170cm

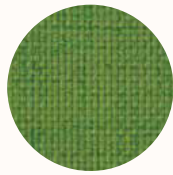
Weight: 211g/m²

Abrasion Resistance: 70,000+ Martindale

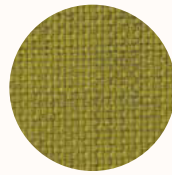
Flammability: AS1530 Part 3

Qualities: Soil Repellency treatment

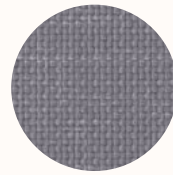
Cleaning: Do not remove any part for separate cleaning. Protect from direct sunlight. Vacuum regularly using low suction. Rotate reversible cushions regularly. Professional cleaning recommended.



Leaf



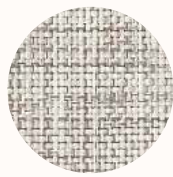
Lemoncello



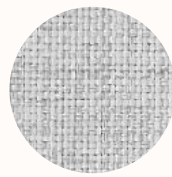
Shark



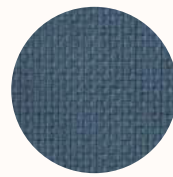
Snow



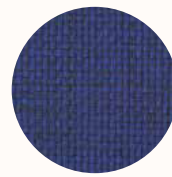
Linen



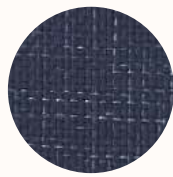
Smoke



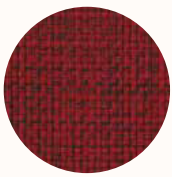
Spring



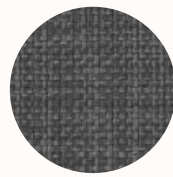
Royal



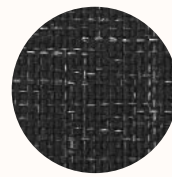
Navy



Garnet



Grey Haze



Jet

Screen / Panel

Category A



Kvadrat Relate Screen

Relate Screen is a special version of the sophisticated twill-woven upholstery textile Relate developed for wall panels, desk screens and similar applications. Patricia Urquiola has created both designs to rethink the concept of melange. While Relate Screen is identical in composition to Relate, it has a more open structure. A faux-uni, it initially appears monochromatic yet, under closer inspection, reveals a diagonal weave which fluidly blends two different coloured yarns. Relate Screen's twill-woven construction captures a delicate sense of movement and subtly references the fashion world. The textile also features a soft hand and an expression that resembles natural fibres.

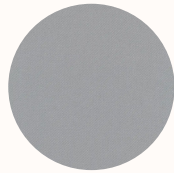
Composition: 100% Trevira CS

Width: Approx 170cm

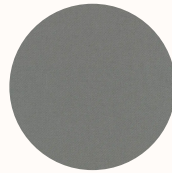
Weight: 470 g/lin.

Pilling: 3-4 (ISO 1-5)

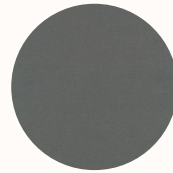
Light Fastness: 5-7 (ISO 1-8)



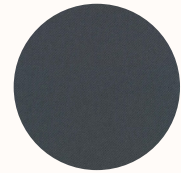
0128



0158



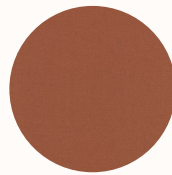
0168



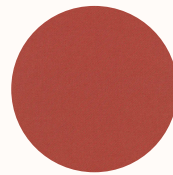
0178



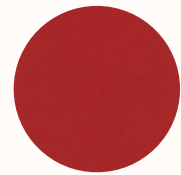
0388



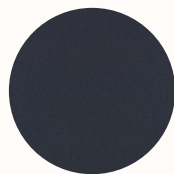
0468



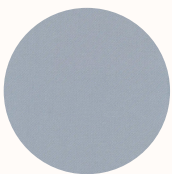
0568



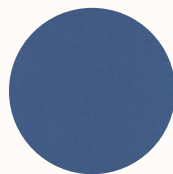
0648



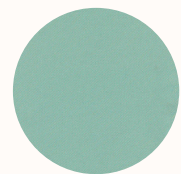
0698



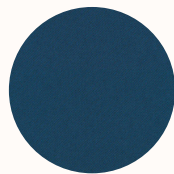
0718



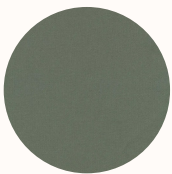
0778



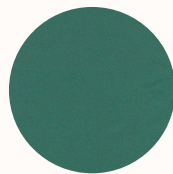
0828



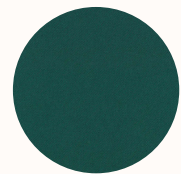
0888



0948



0968



0988

Screen / Panel

Category B

At work with Camira Cara

Cara is a plain weave panel fabric available in a wide selection of commercial colourways. One of our most popular vertical surface fabrics, Cara is used extensively on desk screens, wallsides and on pin boards.

This fabric is largely acoustically transparent and as such is ideal to be used as a decorative facing for sound absorbing boards.

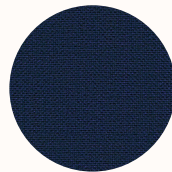
Composition: 100% polypropylene

Width: Approx 170cm

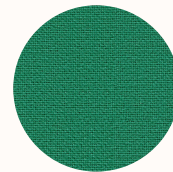
Weight: 220 g/m²



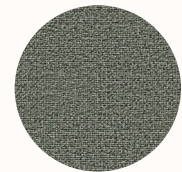
EJ004
Glass



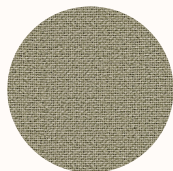
EJ011
Walten



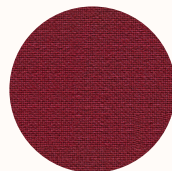
EJ015
Carron



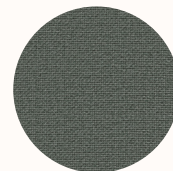
EJ016



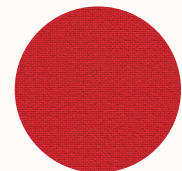
EJ033
Spray



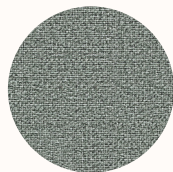
EJ038
Tummel



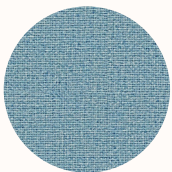
EJ048
Merrick



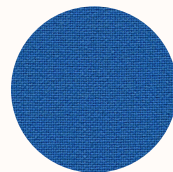
EJ076
Pitlochry



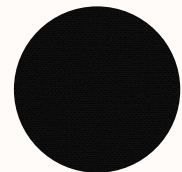
EJ104
Lead



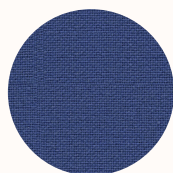
EJ105
Dolphin



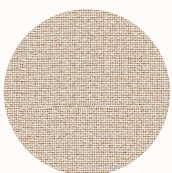
EJ125
Galilee



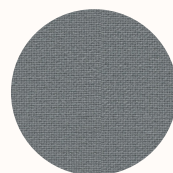
EJ138
Black



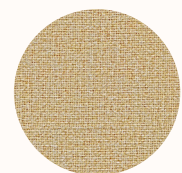
EJ154
Adriatic



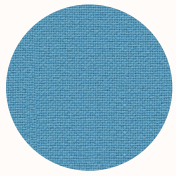
EJ169
Clan



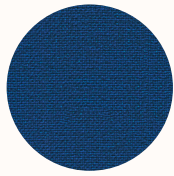
EJ172
Chaucer



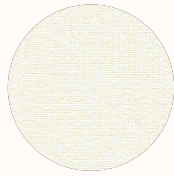
EJ173
Austen



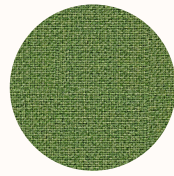
EJ175
Inverness



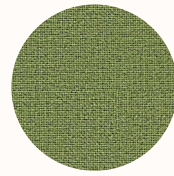
EJ180
Cluanie



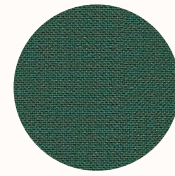
EJ184
Vit



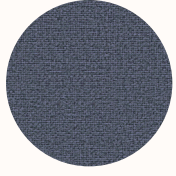
EJ185
Staffa



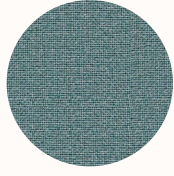
EJ186
Fair Isle



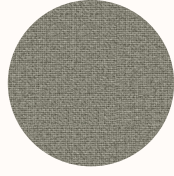
EJ187
Lora



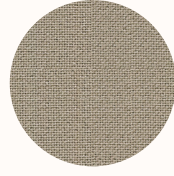
EJ188
Easdale



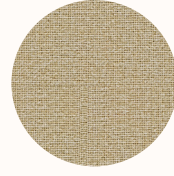
EJ189
Ronay



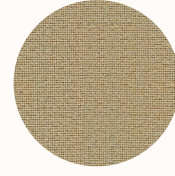
EJ190
Hillswick



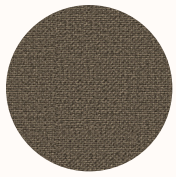
EJ191
Shetland



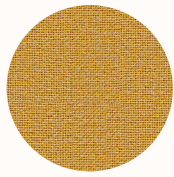
EJ192
Lomond



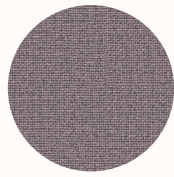
EJ193
Beltane



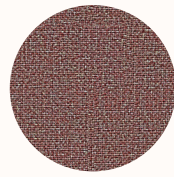
EJ194
Lerwick



EJ195
Maree



EJ196
Denny



EJ197
Lossie

Screen / Panel

Category B

At work with Camira Carlow

Carlow echoes the calm, gentle landscape of its Celtic namesake in rural Ireland. The fabric, like the county, invites you to escape into a place of tranquillity, discovering and exploring its hidden gems scattered throughout a vibrant textile tableau. This dobby weave panel fabric is brought to life in brave and intriguing colour mixes which can be teamed with our most popular upholstery fabrics as well as its panel partner Cara. Carlow is acoustically transparent, making it ideal as a decorative facing for sound absorbing boards.

Composition: 100% polyester

Width: Approx 170cm

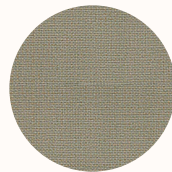
Weight: 348 g/m

Durability: 65,000 Martindale



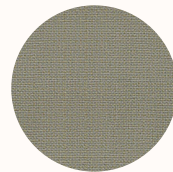
CLW01

Tallow



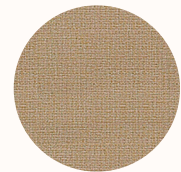
CLW02

Ballina



CLW03

Roundwood



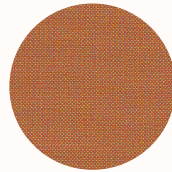
CLW04

Quin



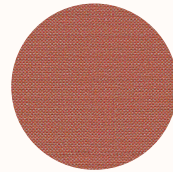
CLW05

Callan



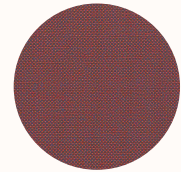
CLW06

Navan



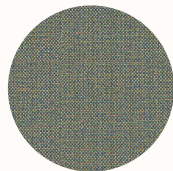
CLW07

Dublin



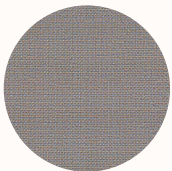
CLW08

Redcross



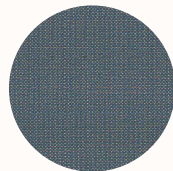
CLW09

Convoy



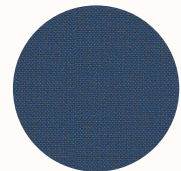
CLW10

Ardee



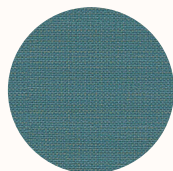
CLW11

Wicklow



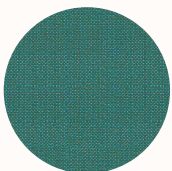
CLW12

Malin



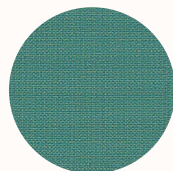
CLW13

Sligo



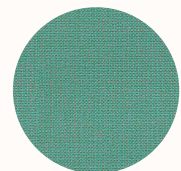
CLW14

Bree



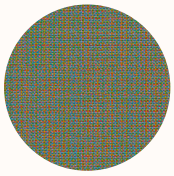
CLW15

Cavan

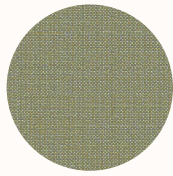


CLW16

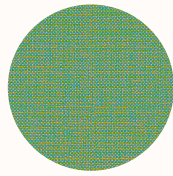
Mayo



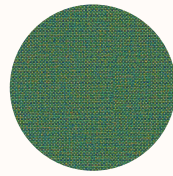
CLW17
Balloo



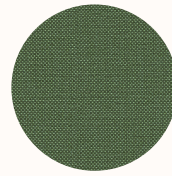
CLW18
Carrick



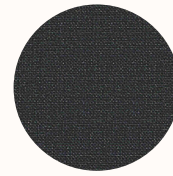
CLW19
Ardmore



CLW20
Ennis



CLW21
Emily



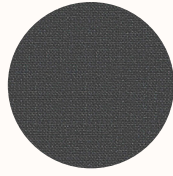
CLW22
Avoca



CLW23
Parteen



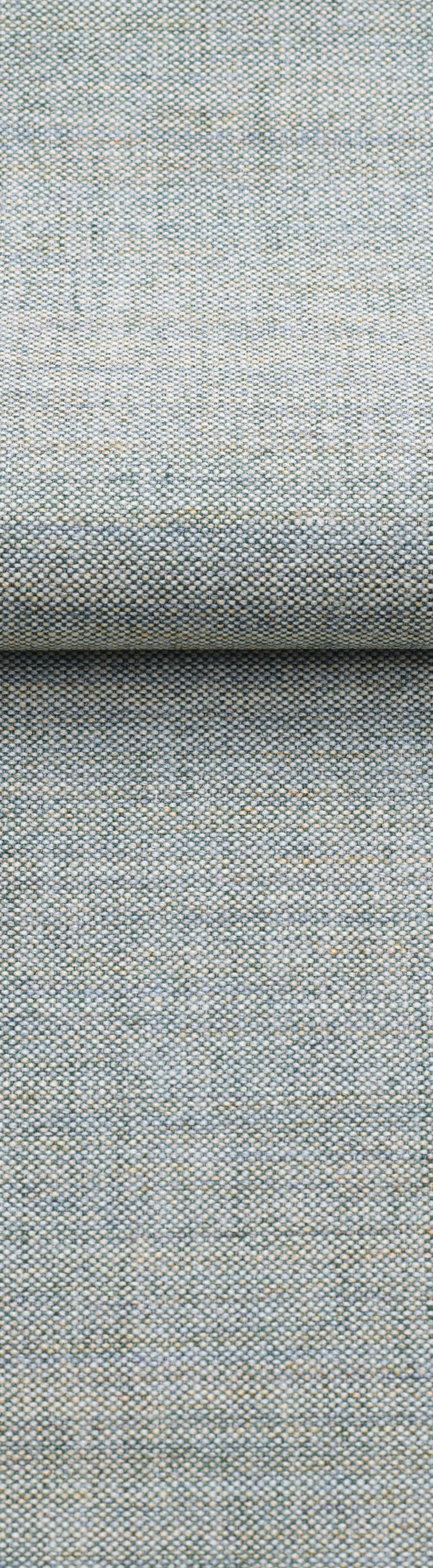
CLW24
Glenamoy



CLW25
Clifden

Screen / Panel

Category B



Kvadrat Remix Screen

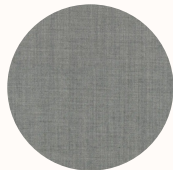
Remix Screen is a lighter version of the acclaimed textile Remix, which is specially developed for wall panels, deskscreens and similar applications. Like Remix, it is designed by Giulio Ridolfo. Remix Screen comes in 16 elegant colourways created matching the palette of Remix 3. Inspired by an extensive study of traditional Indigo dyeing undertaken by Giulio Ridolfo on his travels, these comprise subtle neutrals and natural notes, as well as bolder blue and orange hues. Suitable for contract use, Remix Screen is very durable and has a long life span. It is ideal for architects and designers who seek to configure interiors into different spaces with panels, screens and room-dividing furniture.

Composition: 90% new wool worsted 10% nylon

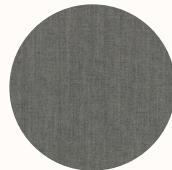
Width: Approx 170cm

Weight: 450 g/lin. m

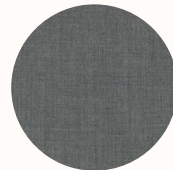
Light Fastness: 6-7



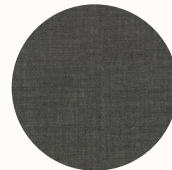
0128



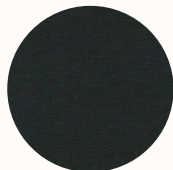
0138



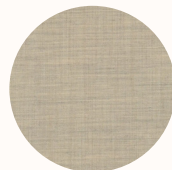
0148



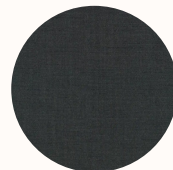
0158



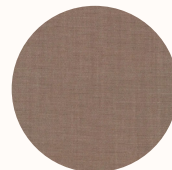
0188



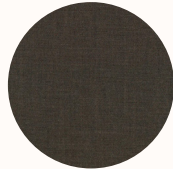
0228



0288



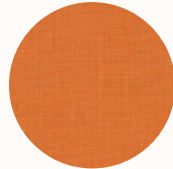
0328



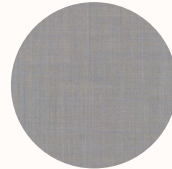
0358



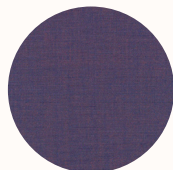
0408



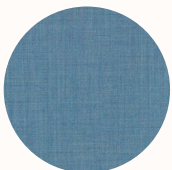
0528



0608



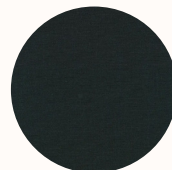
0688



0818



0908



0998

Screen / Panel

Category C

At work with Camira Sonus

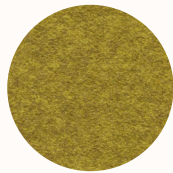
With a fibre felted finish and an appealing mélange effect, the Sonus range is the ideal accompaniment for a modern interior. An acoustically transparent fabric for use on panels, Sonus is the perfect enhancement for a range of vertical surfaces.

Composition: 72% Polyester, 18% Polyamide, 10% Viscose FHU: 57% Polyester, 43% Polyamide

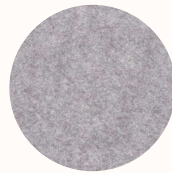
Width: Approx 170cm

Weight: 200 g/m² ±10%

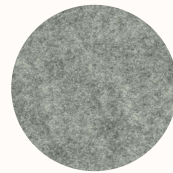
Light Fastness: 5 (ISO 105 - B02), 4 (ISO 105 - B02)



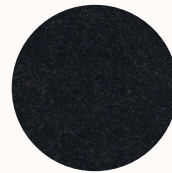
FHR01
Song



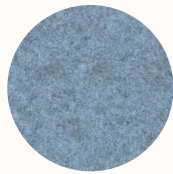
FHR02
Voice



FHR03
Beat



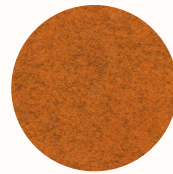
FHR05
Amp



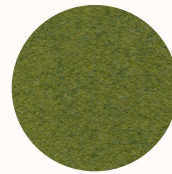
FHR06
Audio



FHR07
Melody



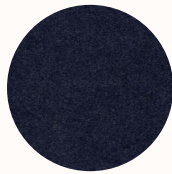
FHR09
Pop



FHR12
Acoustic



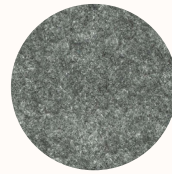
FHR13
Soul



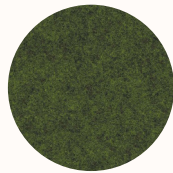
FHR16
Verse



FHR17
Chorus



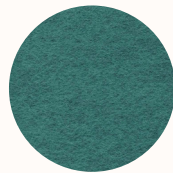
FHU04
Music



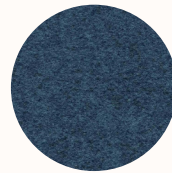
FHU08
Vocal



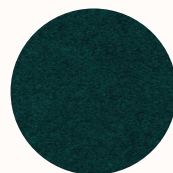
FHU10
Chime



FHU11
Rap



FHU14
Classical



FHU15
Lyric