

HANDSET Controller



2 button handset controller



4 button handset controller

CONTENTS:

2 Button controller

[2](#)

4 Button controller

[3](#)

2 Button Handset Controller

Zenith

Features:

Zenith Handset controller is a product of thoughtful innovation and customer-driven enhancements. The controller is a minimalist user interface with discrete user and technician buttons, Anti-bumping height adjustment features, child lock, and has the ability to set top and bottom reset positions.

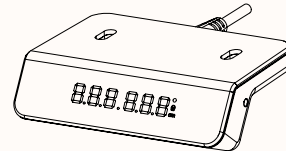
Finishes:

Controller: Black



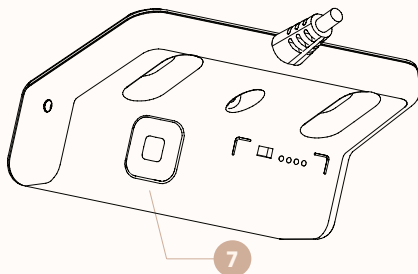
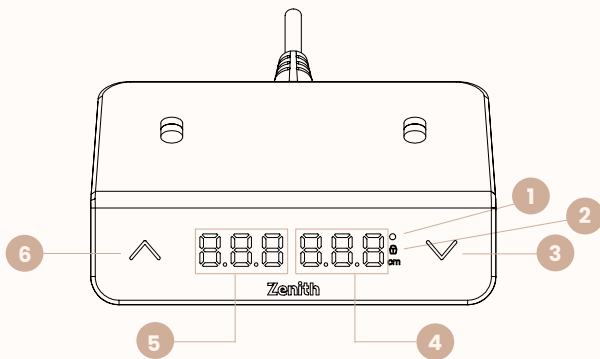
Black

Dimensions:



2 Button Handset

OW 100mm
OD 55mm
OH 25mm



- 1 'C' Confirmation**
Flashes when commands have been accepted
- 2 Child Lock**
On when height is locked
- 3 Drive Down**
- 4 Orange Display**
Table number & table height display
- 5 White Display**
Building level number
- 6 Drive Up**
- 7 'A' Button**
To set preset heights (3 settings)
To enable child lock

Please see user manual for instructions

4 Button Handset Controller

Zenith

Features:

Zenith Handset controller is a product of thoughtful innovation and customer-driven enhancements. The controller is a minimalist user interface with discrete user and technician buttons, Anti-bumping height adjustment features, child lock, and has the ability to set top and bottom reset positions.

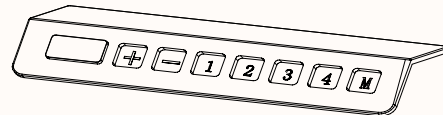
Finishes:

Controller: Black



Black

Dimensions:

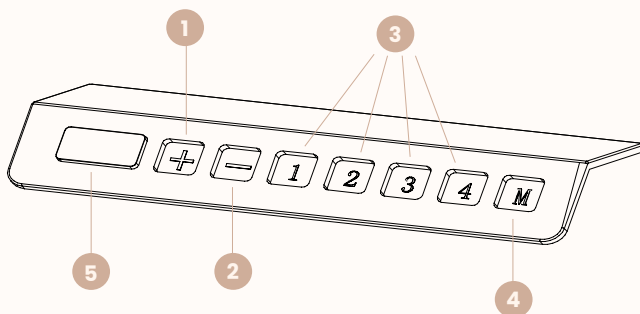


4 Button Handset

OW 149mm

OD 50mm

OH 25mm



- 1 Drive Up
- 2 Drive Down
- 3 Memory Positions
- 4 Memory Button
- 5 Display

Please see user manual for instructions